

THE LEADER IN
HEALTHCARE SEATING SOLUTIONS
published *March 2026*



COMFORT

FUNCTIONALITY

DURABILITY

FR601

LUMEX[®]
by graham-field

The Pivot-Arm Clinical Care Recliner is our flagship recliner that focuses on being the most aesthetically pleasing, comfortable, and durable recliner for use across a variety of clinical and acute care settings. This recliner features pivoting arms for easy and convenient cleaning, provides exceptional patient comfort with the use of Viscoelastic Memory Foam in the seat and backrest, has three comfort positions: upright, first recline and second recline. The red color-coded side pedals quickly put the patient into Trendelenburg (or shock) position while allowing the caregiver to maintain eye contact with patient.



CLINICAL CARE



400 POUND¹
WEIGHT CAPACITY
EVENLY DISTRIBUTED

- PACU
 - Rehab
 - Oncology
 - IV Therapy
 - Exam Room
 - Patient Room
 - Emergency Room
 - Dialysis (Facility)
 - Dialysis (In Home)
 - Nocturnal Dialysis
 - Physical Therapy
 - Pain Management
 - Post Operative Care
 - Same Day Surgery / ASC
- AREAS OF USE



Options:

* Model

	Urethane Arm Caps	Fully Upholstered Arms	Heat and Massage	Heat Only	Extended Legrest ³
FR601Uxxx	■				
FR601UHxxx	■	■			
FR601UHOxxx	■		■		
FR601ULxxx	■				■
FR601ULHxxx	■	■			■
FR601ULHOxxx	■		■		■
FR601Pxxx		■			
FR601PHxxx		■	■		
FR601PHOxxx		■		■	
FR601PLxxx		■			■
FR601PLHxxx		■	■		■
FR601PLHOxxx		■		■	■

† xxx REPRESENTS FABRIC COLOR

FR601 Product Info

URETHANE ARM CAPS



FULLY UPHOLSTERED ARMS



EXTENDED LEGREST³



Positions: THREE POSITION + CAREGIVER-ACTIVATED TRENDELENBURG

Three Positions for Patient Comfort: Upright, First Recline and Second Recline.
Fourth Position: Trendelenburg (or Shock) Position, Caregiver-Activated Using Side Foot Pedal on Either Side



Features:

- Both arms pivot outward, enabling easier cleaning and access
- Aesthetically pleasing design
- Wide contoured seat and back provides an enhanced level of patient comfort
- Viscoelastic Memory Foam engineered into the seat and backrest for ultimate comfort
- 5 inch Tente[®] swivel casters for ease of maneuverability: 3 Total Locking and 1 Directional Locking
- Two self-storing, fold down, side tables with smooth surface for easy cleaning
- Urethane armrest caps are comfortable for patient and easy to maintain; also available with fully upholstered arms
- Pullout footplate³ for easier patient entry and exit and safer patient transport
- Rear push handle for improved patient transport

Accessories:

★ sold separately

	item no [†]
Headrest Pillow	FR5659xxxUS
Headrest Skirt	HRSxxx
Headrest Cover	HRC601xxx
Swing-away Folding Table	SAFT20-601
IV Pole	2101A
IV Mount ⁵	FR601VMNT

ACCESSORY DETAIL ON PAGE 38



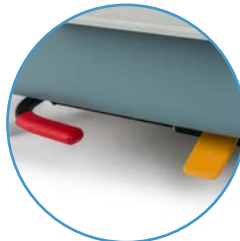
FOLD DOWN, SIDE TABLES



PULLOUT FOOTPLATE³



TENTE[®] CASTERS



CAREGIVER ACTIVATED FOOT PEDALS



REAR PUSH HANDLE

Specifications:

COMPLETE SPECIFICATIONS ON PAGE 36

Overall Width		Overall Width side tables up		Overall Depth		Overall Depth trendelenburg		Overall Height		Width between arms		Arm Height from floor		Seat Width		Seat Depth		Seat Height		Back Height above seat		Caster Diameter		Weight ¹ Capacity EVENLY DISTRIBUTED	
inch	cm†	inch	cm†	inch	cm†	inch	cm†	inch	cm†	inch	cm†	inch	cm†	inch	cm†	inch	cm†	inch	cm†	inch	cm†	inch	cm†	lb	kg†
34.50	87.63	54.00	137.16	38.00	96.52	72.00	182.88	51.50	130.81	25.00	63.50	28.50	72.39	22.50	57.15	19.00	48.26	22.00	68.58	30.00	76.20	5.00	12.70	400	181.44

*Ships Freight: request additional shipping quote †-xxx in the product number is the placeholder for fabric choice † standard rounding method used ¹ maximum weight capacity - evenly distributed - refer to user manual ³ pullout footplate is not compatible available with extended legrest option. alters weight specs ⁵ factory installed - add item with purchase ★ options available at additional cost - accessories sold separately

Available Colors:

COLOR OPTIONS AND FABRIC SWATCHES ON WEBPAGE HC Fabric Choices

page 3

+1 770.368.4700

www.grahamfield.com

graham
field

FR597

LUMEX[®]
by graham-field

The Ortho-Biotic II Recliner is a premium aesthetically pleasing recliner that provides ultimate comfort for a variety of applications in extended care, clinical care, and acute care settings. Features include, infinite recline positions, independent legrest operation, and the use of Viscoelastic Memory Foam in the seat and backrest for ultimate comfort. Using an outside hand lever, the patient can control the back angle to find the position that is most comfortable to them.



EXTENDED
CARE



CLINICAL
CARE



**350
POUND**[†]
WEIGHT CAPACITY
EVENLY DISTRIBUTED

PACU	Rehab	Oncology	IV Therapy	Exam Room	Patient Room	Emergency Room	Dialysis (Facility)	Dialysis (In Home)	Nocturnal Dialysis	Physical Therapy	Pain Management	Post Operative Care	Same Day Surgery / ASC
■	■	■	■	■	■	■	■	■	■	■	■	■	■
AREAS OF USE													



Options:

* Model	Wood Arm Caps	Fully Upholstered Arms	Heat and Massage	Heat Only
FR597Gxxx	■			
FR597GHxxx	■		■	
FR597GH0xxx	■			■
FR597Pxxx		■		
FR597PHxxx		■	■	
FR597PH0xxx		■		■

‡ xxx REPRESENTS FABRIC COLOR

[FR597 Product Info](#)



Positions: INFINITE POSITIONING + CAREGIVER-ACTIVATED TRENDELENBURG

Infinite Recline Positions: Allows Patient to Set a Position That is Most Comfortable
Trendelenburg (or Shock) Position, Caregiver-Activated Using Side Foot Pedal



Features:

- Aesthetically pleasing design
- Viscoelastic Memory Foam engineered into the seat and backrest for ultimate comfort
- Legrest-Recline lever activates independent movement from infinite backrest position
- Headrest pillow included for extra patient comfort
- 4 inch Tente® swivel casters for ease of maneuverability: 3 Total Locking and 1 Directional Locking
- Fully Upholstered armrest are comfortable for patient and easy to maintain; also available with wood arm caps
- Pullout footplate for easier patient entry and exit and safer patient transport
- Rear push handle for improved patient transport

Accessories:

★ sold separately	item no.‡
Headrest Pillow	<i>included</i>
Headrest Skirt	HRSxxx
Left Single Side Table ^{4,5}	FR597GTBLMNT
Swing-away Folding Table	SAFT20-597
IV Pole	2101A
IV Mount ⁵	FR597GIVMNT

ACCESSORY DETAIL ON PAGE 38



HEADREST PILLOW



PULLOUT FOOTPLATE



TENTE® CASTERS



LEGREST-RECLINE LEVER



REAR PUSH HANDLE

Specifications:

COMPLETE SPECIFICATIONS ON PAGE 36

Overall Width		Overall Width side tables up		Overall Depth		Overall Depth trendelenburg		Overall Height		Width between arms		Arm Height from floor		Seat Width		Seat Depth		Seat Height		Back Height above seat		Caster Diameter		Weight ¹ Capacity EVENLY DISTRIBUTED	
inch	cm†	inch	cm†	inch	cm†	inch	cm†	inch	cm†	inch	cm†	inch	cm†	inch	cm†	inch	cm†	inch	cm†	inch	cm†	inch	cm†	lb	kg†
33.00	83.82	45.00	114.30	37.00	93.98	73.00	185.42	46.00	116.84	24.00	60.96	26.75	67.95	23.00	58.42	20.00	50.80	21.00	53.34	30.00	76.20	4.00	10.16	350	158.76

*Ships Freight: request additional shipping quote

‡-xxx in the product number is the placeholder for fabric choice

† standard rounding method used

1 maximum weight capacity - evenly distributed - refer to user manual

4 supports a single table left side only

5 requires factory installation include item with purchase

★ options available at additional cost - accessories sold separately

Available Colors:

COLOR OPTIONS AND FABRIC SWATCHES ON WEBPAGE [HC Fabric Choices](#)

FR566G

LUMEX[®]
by graham-field

Deluxe Clinical Care Recliner is ideal for clinical and acute care settings. It provides the best value while being engineered for maximum patient comfort, durability, and ease of use. It features a contoured back to support the patient comfortably in all three positions: upright, first recline and second recline. Red color-coded side pedals quickly put the patient into Trendelenburg position while allowing the caregiver to maintain eye contact with the patient. Fold down side tables with smooth surfaces and removable side panels for easy cleaning.



CLINICAL
CARE



**400
POUND**¹
WEIGHT CAPACITY
EVENLY DISTRIBUTED

PACU	Rehab	Oncology	IV Therapy	Exam Room	Patient Room	Emergency Room	Dialysis (Facility)	Dialysis (In Home)	Nocturnal Dialysis	Physical Therapy	Pain Management	Post Operative Care	Same Day Surgery / ASC
■	■	■	■	■	■	■	■	■	■	■	■	■	■
AREAS OF USE													



Options:

* Model	Wallsaver Armrest Caps	Fully Upholstered Arms	Heat and Massage	Heat Only
FR566Gxxx	■			
FR566GHxxx	■	■		
FR566GHOxxx	■		■	
FR566GxxxPA		■		
FR566GHxxxPA	■	■		
FR566GHOxxxPA	■		■	

† xxx REPRESENTS FABRIC COLOR

FR566G Product Info



Positions: THREE POSITION + CAREGIVER-ACTIVATED TRENDELENBURG

Three Positions for Patient Comfort: Upright, First Recline and Second Recline
Fourth Position: Trendelenburg (or Shock) Position, Caregiver-Activated Using Side Pedal



Features:

- Wide and contoured seat and back provides an enhanced level of patient comfort
- Higher seat & back height allows caregiver to more comfortably assist patient
- Integrated leg and footrest for exceptional comfort
- 5 inch Tente® Swivel casters for ease of maneuverability: 3 Total Locking and 1 Directional Locking
- Wide and soft armrest for patient comfort
- Wall saver armrest caps increase durability and protect walls from marring; — also available with fully upholstered arms
- Two self-storing, fold down, side tables with smooth surface for easy cleaning
- Smooth and removable side panels for easy cleaning and maintenance
- Rear push handle for improved patient transport

Accessories:

* sold separately	item no.†
Headrest Pillow	FR5659xxxUS
Headrest Skirt	HRSxxx
Headrest Cover	HRC566xxx
4 Inch Extension Legs ⁶	FR5699G
Swing-away Folding Table	SAFT10
IV Pole	2101A
IV Mount	5782RG

ACCESSORY DETAIL ON PAGE 38



FOLD DOWN, FLUSH-MOUNT SIDE TABLES



SOFT, WIDE ARMREST



TENTE® CASTERS



REMOVABLE SIDE PANELS



REAR PUSH HANDLE



INTEGRATED LEG AND FOOTREST

Specifications:

COMPLETE SPECIFICATIONS ON PAGE 36

Overall Width		Overall Width side tables up		Overall Depth		Overall Depth trendelenburg		Overall Height		Width between arms		Arm Height from floor		Seat Width		Seat Depth		Seat Height		Back Height above seat		Caster Diameter		Weight ¹ Capacity EVENLY DISTRIBUTED	
inch	cm†	inch	cm†	inch	cm†	inch	cm†	inch	cm†	inch	cm†	inch	cm†	inch	cm†	inch	cm†	inch	cm†	inch	cm†	inch	cm†	lb	kg†
31.25	79.38	51.50	130.81	37.50	95.25	75.00	190.50	49.50	125.73	21.50	54.61	28.50	72.39	20.50	52.07	19.00	48.26	22.25	59.52	32.00	81.28	5.00	12.70	400	181.44

*Ships Freight: request additional shipping quote † xxx in the product number is the placeholder for fabric choice

† standard rounding method used

¹ maximum weight capacity - evenly distributed - refer to user manual

⁶ adjust height specs: +4 inches (+10.16 cm) * options available at additional cost - accessories sold separately

Available Colors:

COLOR OPTIONS AND FABRIC SWATCHES ON WEBPAGE **HC Fabric Choices**

FR566DG

LUMEX[®]
by graham-field

The Deluxe Drop-Arm Clinical Care Recliner is ideal for clinical and acute care settings. It provides the same best value, comfort, durability, and ease of use as the FR566G with the added drop-arm feature. The drop-arms provide easier and safer lateral transfers of patients.



CLINICAL CARE



400 POUND¹
WEIGHT CAPACITY
EVENLY DISTRIBUTED

PACU	Rehab	Oncology	IV Therapy	Exam Room	Patient Room	Emergency Room	Dialysis (Facility)	Dialysis (In Home)	Nocturnal Dialysis	Physical Therapy	Pain Management	Post Operative Care	Same Day Surgery / ASC
■	■	■	■	■	■	■	■	■	■	■	■	■	■
AREAS OF USE													



Options:

* Model	Wallsaver Armrest Caps	Fully Upholstered Arms	Heat and Massage	Heat Only
FR566DGxxx	■			
FR566DGHxxx	■	■		
FR566DGH0xxx	■			■
FR566DGxxxPA		■		
FR566DGHxxxPA		■	■	
FR566DGH0xxxPA		■		■

† xxx REPRESENTS FABRIC COLOR

[FR566DG Product Info](#)



Positions: THREE POSITION + CAREGIVER-ACTIVATED TRENDELENBURG

Three Positions for Patient Comfort: Upright, First Recline and Second Recline
Fourth Position: Trendelenburg (or Shock) Position, Caregiver-Activated Using Side Pedal



Features:

- Innovative, self-storing, easy to actuate drop-arms for safer lateral transfer
- Wide and contoured seat and back provides an enhanced level of patient comfort
- Higher seat & back height allows caregiver to more comfortably assist patient
- Integrated leg and footrest for exceptional comfort
- 5 inch Tente® swivel casters for ease of maneuverability: 3 Total Locking and 1 Directional Locking
- Wide and soft armrest for patient comfort
- Wallsaver armrest caps increase durability and protect walls from marring; also available with fully upholstered arms
- Two self-storing, fold down, side tables with smooth surface for easy cleaning
- Removable Upholstered side panels for easy cleaning and maintenance
- Rear push handle for improved patient transport

Accessories:

* sold separately	item no.†
Headrest Pillow	FR5659xxxUS
Headrest Skirt	HRSxxx
Headrest Cover	HRC566xxx
Swing-away Folding Table	SAFT10
IV Pole	2101A
IV Mount	5782RG

ACCESSORY DETAIL ON PAGE 38



FOLD DOWN, FLUSH-MOUNT SIDE TABLES



DROP-ARM RELEASE



TENTE® CASTERS



REMOVABLE SIDE PANELS



REAR PUSH HANDLE



INTEGRATED LEG AND FOOTREST

Specifications:

COMPLETE SPECIFICATIONS ON PAGE 36

Overall Width		Overall Width side tables up		Overall Depth		Overall Depth trendelenburg		Overall Height		Width between arms		Arm Height arm up - from floor		Seat Width		Seat Depth		Seat Height		Back Height above seat		Caster Diameter		Weight ¹ Capacity EVENLY DISTRIBUTED	
inch	cm†	inch	cm†	inch	cm†	inch	cm†	inch	cm†	inch	cm†	inch	cm†	inch	cm†	inch	cm†	inch	cm†	inch	cm†	inch	cm†	lb	kg†
32.50	82.55	52.50	133.35	38.00	96.52	75.00	190.50	50.50	128.27	22.00	55.88	28.00	71.39	20.50	52.07	19.00	48.26	22.50	57.15	30.00	76.20	5.00	12.70	400	181.44

*Ships Freight: request additional shipping quote † xxx in the product number is the placeholder for fabric choice † standard rounding method used ¹ maximum weight capacity - evenly distributed - refer to user manual
* options available at additional cost - accessories sold separately

Available Colors:

COLOR OPTIONS AND FABRIC SWATCHES ON WEBPAGE HC Fabric Choices

page 9

•1 770.368.4700

www.grahamfield.com

graham
field

FR587W

LUMEX[®]
by graham-field

The Extra Wide Clinical Care Recliner is ideal for clinical, acute care, and bariatric settings. This recliner provides patients more space than the other recliners while providing excellent value that maximizes patient comfort, product durability, and ease of use. It features patient comfort and support in all three positions: upright, first recline and second recline. Plus Trendelenburg position activated by a rear mounted release lever with dual gas cylinders for smooth assist during movement. Fold down side tables with smooth surfaces and removable side panels for easy cleaning.



BARIATRIC CARE



CLINICAL CARE



450 POUND[†]
WEIGHT CAPACITY
EVENLY DISTRIBUTED

PACU	Rehab	Oncology	IV Therapy	Exam Room	Patient Room	Emergency Room	Dialysis (Facility)	Dialysis (In Home)	Nocturnal Dialysis	Physical Therapy	Pain Management	Post Operative Care	Same Day Surgery / ASC
■	■	■	■	■	■	■	■	■	■	■	■	■	■
AREAS OF USE													



Options:

* Model	Wallsaver Armrest Caps	Fully Upholstered Arms	Heat and Massage	Heat Only
FR587Wxxx	■			
FR587WHxxx	■		■	
FR587WHOxxx	■			■
FR587WxxxPA		■		
FR587WHxxxPA		■	■	
FR587WHOxxxPA		■		■

† xxx REPRESENTS FABRIC COLOR

FR587W Product Info



Positions: THREE POSITION + CAREGIVER-ACTIVATED TRENDELENBURG

Three Positions for Patient Comfort: Upright, First Recline and Second Recline
Fourth Position: Trendelenburg (or Shock) Position, Caregiver-Activated Using Rear Mounted Hand Trigger



Features:

- Extra-Wide seat and back provides an enhanced level of patient comfort
- Higher seat & back height allows caregiver to more comfortably assist patient
- 5 inch Tente® swivel casters for ease of maneuverability: 3 Total Locking and 1 Directional Locking
- Wide and soft armrest for patient comfort
- Wallsaver armrest caps increase durability and protect walls from marring; or available with fully upholstered arms
- Two self-storing, fold down, side tables with smooth surface for easy cleaning
- Dual gas cylinders give smooth assist for Trendelenburg movement
- Smooth and removable side panels for easy cleaning and maintenance
- Rear push handle for improved patient transport

Accessories:

★ sold separately

	item no.†
Headrest Pillow	FR5659xxxUS
Headrest Skirt	HRSxxx
Headrest Cover	HRC587xxx
4 Inch Extension Legs ⁶	FR5699G
Swing-away Folding Table	SAFT10
IV Pole	2101A
IV Mount	5782RG

ACCESSORY DETAIL ON PAGE 38



FOLD DOWN, FLUSH-MOUNT SIDE TABLES



SOFT, WIDE ARMREST



TENTE® CASTERS



REMOVABLE SIDE PANELS



REAR PUSH HANDLE

Specifications:

COMPLETE SPECIFICATIONS ON PAGE 36

Overall Width		Overall Width side tables up		Overall Depth		Overall Depth trendelenburg		Overall Height		Width between arms		Arm Height from floor		Seat Width		Seat Depth		Seat Height		Back Height above seat		Caster Diameter		Weight ¹ Capacity EVENLY DISTRIBUTED	
inch	cm†	inch	cm†	inch	cm†	inch	cm†	inch	cm†	inch	cm†	inch	cm†	inch	cm†	inch	cm†	inch	cm†	inch	cm†	inch	cm†	lb	kg†
33.00	83.82	53.50	135.89	45.50	115.57	78.00	198.12	50.00	127.00	23.25	59.06	28.00	71.39	24.00	60.96	20.50	52.07	22.00	55.88	33.50	85.09	5.00	12.70	450	204.12

*Ships Freight: request additional shipping quote † xxx in the product number is the placeholder for fabric choice

† standard rounding method used ¹ maximum weight capacity - evenly distributed - refer to user manual ⁶ adjust height specs: +4 inches (+10.16 cm) ★ options available at additional cost - accessories sold separately

Available Colors:

COLOR OPTIONS AND FABRIC SWATCHES ON WEBPAGE **HC Fabric Choices**

FR587WD

LUMEX[®]
by graham-field

The Extra Wide Drop-Arm Clinical Care Recliner is ideal for clinical, acute care, and bariatric settings. It provides the same great value, extra-width, comfort, durability, and ease of use as the FR587W with the added drop-arm feature. The drop-arms provide easier and safer lateral transfers of patients.



*shown with Bed Socket IV Pole
and IV Pole Attachment accessories*

**BARIATRIC
CARE**



**CLINICAL
CARE**



**450
POUND**[†]
WEIGHT CAPACITY
EVENLY DISTRIBUTED

PACU	Rehab	Oncology	IV Therapy	Exam Room	Patient Room	Emergency Room	Dialysis (Facility)	Dialysis (In Home)	Nocturnal Dialysis	Physical Therapy	Pain Management	Post Operative Care	Same Day Surgery / ASC
■	■	■	■	■	■	■	■	■	■	■	■	■	■
AREAS OF USE													



Options:

* Model

Model	Wallsaver Armrest Caps	Fully Upholstered Arms	Heat and Massage	Heat Only
FR587WDxxx	■			
FR587WDHxxx	■		■	
FR587WDH0xxx	■			■
FR587WDxxxPA		■		
FR587WDHxxxPA		■	■	
FR587WDH0xxxPA		■		■

‡ xxx REPRESENTS FABRIC COLOR

FR587WD Product Info

Wallsaver Armrest Caps
Fully Upholstered Arms
Heat and Massage
Heat Only



Positions: THREE POSITION + CAREGIVER-ACTIVATED TRENDELENBURG

Three Positions for Patient Comfort: Upright, First Recline and Second Recline

Fourth Position: Trendelenburg (or Shock) Position, Caregiver-Activated Using Rear Mounted Hand Trigger



Features:

- Innovative, self-storing, easy to actuate drop-arms for safer lateral transfer
- Extra-Wide seat and back provides an enhanced level of patient comfort
- Higher seat & back height allows caregiver to more comfortably assist patient
- 5 inch Tente® swivel casters for ease of maneuverability: 3 Total Locking and 1 Directional Locking
- Wide and soft armrest for patient comfort
- Wallsaver armrest caps increase durability and protect walls from marring; or available with fully upholstered arms
- Two self-storing, fold down, side tables with smooth surface for easy cleaning
- Dual gas cylinders give smooth assist for Trendelenburg movement
- Removable upholstered side panels for easy cleaning and maintenance
- Rear push handle for improved patient transport

Accessories:

* sold separately	item no.†
Headrest Pillow	FR5659xxxUS
Headrest Skirt	HRSxxx
Headrest Cover	HRC587xxx
4 Inch Extension Legs ⁶	FR5699G
Swing-away Folding Table	SAFT10
IV Pole	2101A
IV Mount	5782RG

ACCESSORY DETAIL ON PAGE 38



FOLD DOWN, FLUSH-MOUNT SIDE TABLES



DROP-ARM RELEASE



TENTE® CASTERS



UPHOLSTERED REMOVABLE SIDE PANELS



REAR PUSH HANDLE

Specifications:

COMPLETE SPECIFICATIONS ON PAGE 36

Overall Width		Overall Width side tables up		Overall Depth		Overall Depth trendelenburg		Overall Height		Width between arms		Arm Height arm up - from floor		Seat Width		Seat Depth		Seat Height		Back Height above seat		Caster Diameter		Weight ¹ Capacity EVENLY DISTRIBUTED	
inch	cm†	inch	cm†	inch	cm†	inch	cm†	inch	cm†	inch	cm†	inch	cm†	inch	cm†	inch	cm†	inch	cm†	inch	cm†	inch	cm†	lb	kg†
35.75	90.81	58.25	147.96	44.00	111.76	78.00	198.12	50.00	127.00	26.50	67.31	27.50	69.85	24.00	60.96	20.50	52.07	22.00	55.88	33.50	85.09	5.00	12.70	450	204.12

*Ships Freight: request additional shipping quote ‡ xxx in the product number is the placeholder for fabric choice

† standard rounding method used

† maximum weight capacity - evenly distributed - refer to user manual

* options available at additional cost - accessories sold separately

Available Colors:

COLOR OPTIONS AND FABRIC SWATCHES ON WEBPAGE **HC Fabric Choices**

FR577RG

LUMEX[®]
by graham-field

The most versatile **Lumex Multi-Care Recliner** is ideal for treatment within extended care, clinical and acute care settings. It features an adjustable headrest section and three comfort positions: upright, first recline and second recline. It includes a back mounted Trendelenburg release lever, fold down side tables with smooth surfaces, and removable side panels for easy cleaning. The FR577RG is an exceptional chair that provides comfort, utility, and flexibility for multiple treatment applications.



EXTENDED CARE



CLINICAL CARE



HOME CARE



**350
POUND**[†]
WEIGHT CAPACITY
EVENLY DISTRIBUTED

- PACU
 - Rehab
 - Oncology
 - IV Therapy
 - Exam Room
 - Patient Room
 - Emergency Room
 - Dialysis (Facility)
 - Dialysis (In Home)
 - Nocturnal Dialysis
 - Physical Therapy
 - Pain Management
 - Post Operative Care
 - Same Day Surgery / ASC
- AREAS OF USE



Options:

* Model	Wallsaver Armrest Caps	Fully Upholstered Arms	Heat and Massage	Heat Only
FR577RGxxx	■			
FR577RGHxxx	■		■	
FR577RGHOxxx	■			■
FR577RGxxxPA		■		
FR577RGHxxxPA		■	■	
FR577RGHOxxxPA		■		■

‡ xxx REPRESENTS FABRIC COLOR

[FR577RG Product Info](#)



Positions: THREE POSITION + CAREGIVER-ACTIVATED TRENDELENBURG

Three Positions for Patient Comfort: Upright, First Recline and Second Recline
Fourth Position: Trendelenburg (or Shock) Position, Caregiver-Activated Using Rear Mounted Hand Trigger



Features:

- Articulating headrest section can be moved forward for enhanced patient comfort
- 5 inch Tente® swivel casters for ease of maneuverability: 3 Total Locking and 1 Directional Locking
- Wide and soft armrest for patient comfort
- Wallsaver armrest caps increase durability and protect walls from marring; also available with fully upholstered arms
- Back-mounted arm pads for additional support
- Two self-storing, fold down, side tables with smooth surface for easy cleaning
- Gas cylinders give smooth assist for Trendelenburg movement
- Smooth and removable side panels for easy cleaning and maintenance
- Rear push handle for improved patient transport

Accessories:

★ sold separately

	item no.†
Headrest Pillow	FR5659xxxUS
Headrest Skirt	HRSxxx
Headrest Cover	HRC577xxx
4 Inch Extension Legs ⁶	FR5699G
Swing-away Folding Table	SAFT10
IV Pole	2101A
IV Mount	5782RG

ACCESSORY DETAIL ON PAGE 38



FOLD DOWN, FLUSH-MOUNT SIDE TABLES



SOFT, WIDE ARMREST



TENTE® CASTERS



ARTICULATING HEADREST



REAR PUSH HANDLE



BACK-MOUNTED ARM PADS

Specifications:

COMPLETE SPECIFICATIONS ON PAGE 36

Overall Width		Overall Width side tables up		Overall Depth		Overall Depth trendelenburg		Overall Height		Width between arms		Arm Height from floor		Seat Width		Seat Depth		Seat Height		Back Height above seat		Caster Diameter		Weight ¹ Capacity EVENLY DISTRIBUTED	
inch	cm†	inch	cm†	inch	cm†	inch	cm†	inch	cm†	inch	cm†	inch	cm†	inch	cm†	inch	cm†	inch	cm†	inch	cm†	inch	cm†	lb	kg†
31.50	80.01	52.00	132.08	40.50	102.87	73.50	186.69	48.00	121.92	21.50	54.61	27.50	69.85	21.50	54.61	19.50	49.53	20.50	52.07	34.00	86.36	5.00	12.70	350	158.76

*Ships Freight: request additional shipping quote ‡ xxx in the product number is the placeholder for fabric choice

† standard rounding method used

¹ maximum weight capacity - evenly distributed - refer to user manual

⁶ adjust height specs: +4 inches (+10.16 cm) ★ options available at additional cost - accessories sold separately

Available Colors:

COLOR OPTIONS AND FABRIC SWATCHES ON WEBPAGE HC Fabric Choices

FR588W

LUMEX[®]
by graham-field

Powered Bariatric Clinical Care Recliner supports up to 700 lb. A four-function hand pendant controls adjustable infinite positions for patient comfort. Legrest and backrest can be raised and lowered independently. Equipped with a rechargeable battery pack in case of a power failure. Quick-release trigger for Trendelenburg Position. Armrests drop for easier lateral transfers. Fold down side tables with smooth surfaces for easy cleaning. This recliner is ideal for the safety of care staff assisting bariatric patients along with the patients themselves.



BARIATRIC CARE



EXTENDED CARE



CLINICAL CARE



700 POUND[†]
WEIGHT CAPACITY
EVENLY DISTRIBUTED

PACU	Rehab	Oncology	IV Therapy	Exam Room	Patient Room	Emergency Room	Dialysis (Facility)	Dialysis (In Home)	Nocturnal Dialysis	Physical Therapy	Pain Management	Post Operative Care	Same Day Surgery / ASC
■	■	■	■	■	■	■	■	■	■	■	■	■	■
AREAS OF USE													



Fully Upholstered Arms

Model

FR588Wxxx

† xxx REPRESENTS FABRIC COLOR

[FR588W Product Info](#)



HAND PENDANT
ADJUSTABLE POSITIONS
FOR PATIENT COMFORT



shown with
Swing Away Folding Table
accessory

Positions: INFINITE POSITIONING + CAREGIVER-ACTIVATED TRENDLENBURG

Infinite Recline Positions: Allows Patient to Set a Position That is Most Comfortable
Fourth Position: Trendelenburg (or Shock) Position, Caregiver-Activated Using Rear Mounted Hand Trigger



Features:

- Fully Upholstered Arms are comfortable
- Powered Recline with four-function controller
- Legrest can be raised and lowered independently of backrest
- Battery backup in case of a power failure
- Rear push handle for improved patient transport
- Innovative, self-storing, easy to actuate drop-arms for safer lateral transfer
- Two self-storing, fold down, side tables with smooth surface for easy cleaning
- 5 inch casters for easy transport: 2 Rear Swivel and Wheel Locking; 2 Fixed Front Wheels

Accessories:

★ sold separately item no.†

Swing Away Folding Table SAFT30

ACCESSORY DETAIL ON PAGE 38



POWERED LEGREST



EASY TO ACTUATE
DROP-ARMS



5 INCH CASTERS



FOLD DOWN, FLUSH-MOUNT
SIDE TABLES



REAR PUSH HANDLE



HEADREST PILLOW
INCLUDED

Specifications:

COMPLETE SPECIFICATIONS ON PAGE 36

Overall Width		Overall Width side tables up		Overall Depth		Overall Depth trendelenburg		Overall Height		Width between arms		Arm Height arm up - from floor		Seat Width		Seat Depth		Seat Height		Back Height above seat		Caster Diameter		Weight ¹ Capacity EVENLY DISTRIBUTED	
inch	cm†	inch	cm†	inch	cm†	inch	cm†	inch	cm†	inch	cm†	inch	cm†	inch	cm†	inch	cm†	inch	cm†	inch	cm†	inch	cm†	lb	kg†
38.00	96.52	48.00	121.92	59.00	149.86	77.00	195.58	53.00	134.62	24.50	62.23	31.00	78.74	26.50	67.31	23.50	59.69	25.50	64.77	35.00	88.90	5.00	12.70	700	317.52

*Ships Freight: request additional shipping quote † xxx in the product number is the placeholder for fabric choice ‡ standard rounding method used ¹ maximum weight capacity - evenly distributed - refer to user manual ★ accessories sold separately

Available Colors:



427 BLUE RIDGE 851 DOE SKIN 857 JADE 863 ROSEWOOD

574G

LUMEX[®]
by graham-field

Three Position Preferred Care Recliner is the recliner that started it all and a standard in the industry! This first recliner is specifically designed to improve the comfort and mobility of residents in extended care facilities. Ergonomically designed seat and back with varied density foam construction provides correct support. Articulating headrest quickly adjusts to maximize individual comfort requirements.



EXTENDED CARE



250 POUND[™]
WEIGHT CAPACITY
EVENLY DISTRIBUTED

HOME CARE



page 18
+1 770.368.4700

www.grahamfield.com

AREA OF USE	Usage
PACU	■
Rehab	■
Oncology	■
IV Therapy	■
Exam Room	■
Patient Room	■
Emergency Room	■
Dialysis (Facility)	■
Dialysis (In Home)	■
Nocturnal Dialysis	■
Physical Therapy	■
Pain Management	■
Post Operative Care	■
Same Day Surgery / ASC	■



Model

574Gxxx ■

† xxx REPRESENTS FABRIC COLOR

 574G Product Info



Positions: THREE POSITION

Three Positions for Patient Comfort: Upright, First Recline and Second Recline
Recline Position Lock: Allows Caregiver to Secure the Chair in Any of the Three Positions



Features:

- Ergonomically designed seat and back with varied density foam construction provides correct support
- Flex-o-Lator seat support system increases comfort by reducing the risk of "bottoming out"
- Articulating headrest quickly adjusts to maximize individual comfort requirements
- 5 inch casters for easy transport: 2 Rear Swivel and Wheel Locking; 2 Fixed Front Wheels
- Includes activity table that can be fixed in position or left unsecured for easy exit from the recliner
- Durable epoxy coated steel frame is easy to clean and maintain

Accessories:

<i>* sold separately</i>	item no.†
Headrest Pillow	FR5659xxxJS
Headrest Skirt	HRSxxx
Activity Tray Table	included
IV Pole	2101A
IV Mount	5782RG

ACCESSORY DETAIL ON PAGE 38



INCLUDES ACTIVITY TABLE



ARTICULATING HEADREST



5 INCH CASTERS



REAR PUSH HANDLE



ACTIVITY TRAY STORAGE

Specifications:

COMPLETE SPECIFICATIONS ON PAGE 36

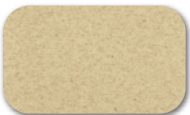
Overall Width		Overall Depth		Overall Depth fully reclined		Overall Height		Width between arms		Arm Width		Arm Height from floor		Seat Width		Seat Depth		Seat Height		Back Height above seat		Caster Diameter		Weight ¹ Capacity EVENLY DISTRIBUTED	
inch	cm†	inch	cm†	inch	cm†	inch	cm†	inch	cm†	inch	cm†	inch	cm†	inch	cm†	inch	cm†	inch	cm†	inch	cm†	inch	cm†	lb	kg†
24.50	62.23	41.00	104.14	65.00	165.10	47.00	119.38	20.00	50.80	2.00	5.08	26.00	66.04	19.00	48.26	19.00	48.26	20.00	50.80	29.00	73.66	5.00	12.70	250	113.40

*Ships Freight: request additional shipping quote †xxx in the product number is the placeholder for fabric choice † standard rounding method used ¹ maximum weight capacity - evenly distributed - refer to user manual * accessories sold separately

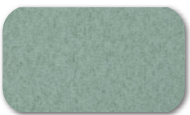
Available Colors:



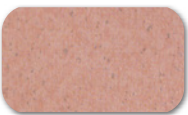
427 BLUE RIDGE



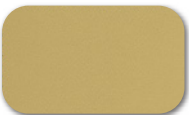
851 DOE SKIN



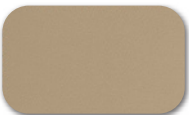
857 JADE



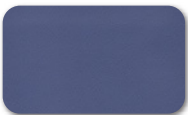
863 ROSEWOOD



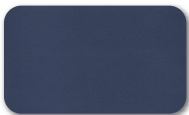
401 VINTAGE GOLD



409 WARM TAUPE



454 ROYAL BLUE



432 IMPERIAL BLUE

FR565WG

LUMEX[®]
by graham-field

The Extra Wide Preferred Care Recliner is ideal for clinical and acute care settings. This recliner allows for almost infinite recline positioning. The unique position lock can be caregiver activated to stabilize a position for patient comfort. A unique suspension seating system self-adjusts to each person, cradling the resident and virtually eliminating the risk of "bottoming out." The quick release upholstery allows for easy cleaning, removal and replacement. The reduced armrest and seat height enables the recliner to fit under dining and activity tables.



EXTENDED
CARE



CLINICAL
CARE



**400
POUND**[†]
WEIGHT CAPACITY
EVENLY DISTRIBUTED

PACU	Rehab	Oncology	IV Therapy	Exam Room	Patient Room	Emergency Room	Dialysis (Facility)	Dialysis (In Home)	Nocturnal Dialysis	Physical Therapy	Pain Management	Post Operative Care	Same Day Surgery / ASC
■	■				■						■	■	■
AREAS OF USE													



Model

FR565WGxxx

† xxx REPRESENTS FABRIC COLOR



Positions: INFINITE POSITIONING + CAREGIVER -ACTIVATED POSITION LOCK

Infinite Recline Positions: Allows Patient to Set a Position That is Most Comfortable
 Recline Position Lock: Allows Caregiver to Secure the Chair in Any Desired Position



Features:

- Unique Ultra-flex system cradles resident to greatly reduce the risk of "bottoming out"
- 24 inch wide seat provides excellent patient comfort
- Quick-release upholstery allows for easy cleaning, removal and replacements
- Wide and soft armrest for patient comfort
- Vinyl upholstery is sulfide stain, mildew and oil resistant
- 5 inch Tente® swivel casters for ease of maneuverability: 3 Total Locking and 1 Directional Locking
- Durable epoxy coated steel frame is easy to clean and maintain
- Wall Saver armrests increase durability and keep walls from marring

Accessories:

★ sold separately	item no.†
Headrest Pillow	FR5659xxxUS
Adjustable Footrest	LX5640G
IV Pole	2101A
IV Mount	5782RG

ACCESSORY DETAIL ON PAGE 38



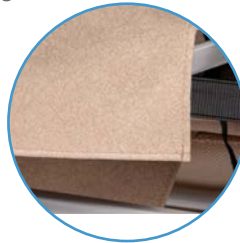
RECLINE POSITION LOCK



SOFT, WIDE ARMREST



TENTE® CASTERS



QUICK-RELEASE
UPHOLSTERY



ANTI-TIPPERS

Specifications:

COMPLETE SPECIFICATIONS ON PAGE 36

Overall Width		Overall Depth		Overall Depth fully reclined		Overall Height		Width between arms		Arm Width		Arm Height from floor		Seat Width		Seat Depth		Seat Height		Back Height above seat		Caster Diameter		Weight ¹ Capacity EVENLY DISTRIBUTED	
inch	cm†	inch	cm†	inch	cm†	inch	cm†	inch	cm†	inch	cm†	inch	cm†	inch	cm†	inch	cm†	inch	cm†	inch	cm†	inch	cm†	lb	kg†
32.00	81.28	37.00	93.98	66.50	168.91	48.00	121.92	24.00	60.96	4.50	11.43	28.00	71.39	24.00	60.96	19.50	49.53	20.00	50.80	30.50	77.47	5.00	12.70	400	181.44

* Ships Freight: request additional shipping quote † xxx in the product number is the placeholder for fabric choice ‡ standard rounding method used ¹ maximum weight capacity - evenly distributed - refer to user manual ★ accessories sold separately

Available Colors:

COLOR OPTIONS AND FABRIC SWATCHES ON WEBPAGE

FR565

LUMEX[®]
by graham-field

FR565G Preferred Care Recliner has the same great features as the FR565WG with a 19 inch seat.

FR565DG Drop-Arm Preferred Care Recliner has the same great features as FR565G with an easy-to-actuate self-storing drop-arms for a safer and easier lateral transfer for the resident and caregiver.

FR565TG Tilt-in-Space Drop-Arm Preferred Care Recliner features self-storing, height-adjustable drop-arms for safer, easier lateral transfer. The Tilt-in-Space function allows the caregiver to "Tilt" the seat and back for pressure relief and position change.



Drop-Arm model
FR565DG shown



Tilt-in-Space model
FR565TG shown

EXTENDED
CARE



250
POUND[†]
WEIGHT CAPACITY
EVENLY DISTRIBUTED

HOME
CARE



page 22

+1 770.368.4700

PACU	Rehab	Oncology	IV Therapy	Exam Room	Patient Room	Emergency Room	Dialysis (Facility)	Dialysis (In Home)	Nocturnal Dialysis	Physical Therapy	Pain Management	Post Operative Care	Same Day Surgery / ASC
■	■	■	■	■	■	■	■	■	■	■	■	■	■
AREAS OF USE													



Options:

* Model	Recliner	Drop-Arm	Tilt-in-Space
FR565Gxxx	■		
FR565DGxxx	■	■	
FR565GTGxxx	■	■	■

† xxx REPRESENTS FABRIC COLOR



FR565G



FR565DG



FR565TG

Positions: INFINITE POSITIONING + CAREGIVER-ACTIVATED POSITION LOCK

Infinite Recline Positions: Allows Patient to Set a Position That is Most Comfortable
 Recline Position Lock: Allows Caregiver to Secure the Chair in Any Desired Position

FR565TG: + CAREGIVER-ACTIVATED TILT-IN-SPACE POSITION

Tilt-In-Space: Caregiver-Activated Side Rocker Pedal "Tilts" Seat and Back for Pressure Relief and Position Change



Features:

- Tilt-in-Space function allows caregiver to tilt the seat and back for pressure relief and position change (TG)
- Innovative, self-storing, easy to actuate drop-arms for safer lateral transfer (DG & TG)
- Unique Ultra-flex system cradles resident to greatly reduce the risk of "bottoming out"
- Quick-release upholstery allows for easy cleaning, removal and replacements
- Vinyl upholstery is sulfide stain, mildew and oil resistant
- Lower armrest and seat height to fit under dining/activity tables
- Wide and soft armrest for patient comfort
- 5 inch casters for easy transport: 2 Rear Swivel and Wheel Locking; 2 Fixed Front Wheels
- Durable epoxy coated steel frame is easy to clean and maintain
- Wallsaver armrests increase durability and keep walls from marring

Accessories:

* sold separately	item no†
Headrest Pillow	FR5659xxxJS
Head Support	FR56461xxx
Body Bolster	FR56471xxx
Adjustable Footrests	LX5640G
Foot-Drop Assembly	5657Gxxx
Activity Tray Table	5644G
Anti-Tip Wheels	LX5656G
IV Pole	2101A
IV Mount	5782RG

ACCESSORY DETAIL ON PAGE 38



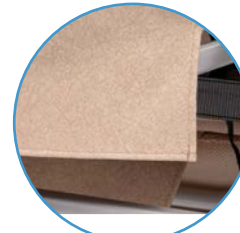
EPOXY COATED STEEL FRAME



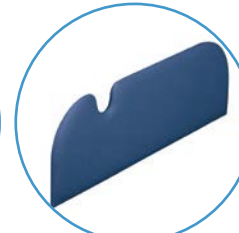
SOFT, WIDE ARMREST



5 INCH CASTERS



QUICK-RELEASE UPHOLSTERY



REMOVABLE SIDE PANELS



SELF-STORING DROP-ARMS

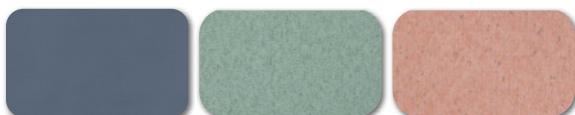
Specifications:

COMPLETE SPECIFICATIONS ON PAGE 36

Series	Overall Width		Overall Depth		Overall Depth fully reclined		Overall Height		Width between arms		Arm Width		Arm Height arm up · from floor		Seat Width		Seat Depth		Seat Height		Back Height above seat		Caster Diameter		Weight ¹ Capacity EVENLY DISTRIBUTED	
	inch	cm†	inch	cm†	inch	cm†	inch	cm†	inch	cm†	inch	cm†	inch	cm†	inch	cm†	inch	cm†	inch	cm†	inch	cm†	inch	cm†	lb	kg†
DG & TG	28.00	71.12	36.00	91.44	66.00	167.64	48.00	121.43	19.50	49.53	4.50	11.43	26.75	67.95	19.00	48.26	19.50	49.53	22.00	55.88	31.00	78.74	5.00	12.70	250	113.40
G									19.00	8.26			26.00	66.04					20.00	50.80						

* Ships Freight: request additional shipping quote † xxx in the product number is the placeholder for fabric choice † standard rounding method used † maximum weight capacity - evenly distributed - refer to user manual * available at additional cost - accessories sold separately

Available Colors:



427 BLUE RIDGE 857 JADE 863 ROSEWOOD



7150

GENDRON[®]
by graham-field

Bariatric Clinical Care Recliner is designed for patients weighing up to 850 lb for use across a variety of clinical, extended care and homecare settings. This recliner features an extra-wide seating surface for comfort, swivel and locking casters for maneuverability, high-density foam back with a 135° recline and elevating legrest support. The infinite recline is caregiver activated at the rear of the recliner.



BARIATRIC CARE



EXTENDED CARE



CLINICAL CARE



HOME CARE



850 POUND[†]
WEIGHT CAPACITY
EVENLY DISTRIBUTED

PACU	Rehab	Oncology	IV Therapy	Exam Room	Patient Room	Emergency Room	Dialysis (Facility)	Dialysis (In Home)	Nocturnal Dialysis	Physical Therapy	Pain Management	Post Operative Care	Same Day Surgery / ASC
■	■	■	■	■	■	■	■	■	■	■	■	■	■
AREAS OF USE													



Options:

* Model

Model	Wide Seat Width	Standard Seat Width
7150Pxxx	■	□
7155Pxxx	□	■

‡ xxx REPRESENTS FABRIC COLOR

715xP Product Info



Positions: INFINITE POSITIONING + CAREGIVER-ACTIVATED

Infinite Recline Positions: Allows Caregiver to Set a Position That is Most Comfortable for Patient, Caregiver-Activated Using a Hand Trigger Located on The Backrest Handle

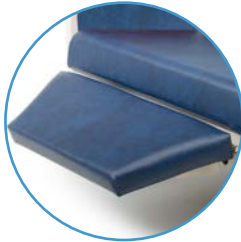


Features:

- Extra-wide seat and back provides an enhanced level of patient comfort
- Swivel casters for ease of maneuverability: 2 Front Directional Locking and 2 Total Locking
- High-density foam back and seat
- 105 - 135 degree recline and elevating legrest support
- Hydraulic gas cylinders give smooth assist during recline
- Rear push handle for improved patient transport
- Wide and soft armrest for patient comfort



HYDRAULIC ASSIST



ELEVATING LEGREST



5 INCH CASTERS



REAR PUSH HANDLE

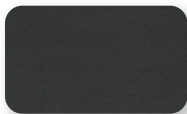
Specifications:

COMPLETE SPECIFICATIONS ON PAGE 36

Series	Overall Width		Overall Depth		Overall Depth fully reclined		Overall Height		Width between arms		Arm Width		Arm Height from floor		Seat Width		Seat Depth		Seat Height		Back Height above seat		Caster Diameter		Weight ¹ Capacity EVENLY DISTRIBUTED	
	inch	cm†	inch	cm†	inch	cm†	inch	cm†	inch	cm†	inch	cm†	inch	cm†	inch	cm†	inch	cm†	inch	cm†	inch	cm†	inch	cm†	lb	kg†
7150P	38.25	97.16	68.00	172.72	67.50	171.45	47.50	120.65	29.50	74.93	4.50	11.43	25.50	64.77	29.25	74.30	19.25	48.90	21.00	53.34	33.00	83.82	5	12.70	850	385.55
7155P	34.25	87.00							25.50	64.77					25.25	64.14										

* Ships Freight; request additional shipping quote ‡ xxx in the product number is the placeholder for fabric choice † standard rounding method used ¹ maximum weight capacity - evenly distributed - refer to user manual ★ options available at additional cost

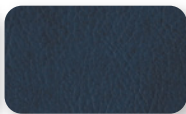
Available Colors:



183 BLACK



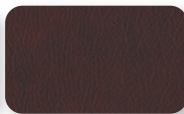
180 BROWN



1199 DARK BLUE



1117 GREY



186 PORT WINE



TRC

GENDRON[®]
by graham-field

Tilt-Recline Chair is designed for patients weighing up to 750 lb for use across a variety of clinical care settings. This recliner features separate hand lever controls which enable the reclining back and seat tilt to function individually. A 5 inch, removable, high-density foam seat surface with fabric cover is removable. Front riggings are available in footrests or full width padded leg support and full width footboard.



Footboard model shown
TRC28750-FB

BARIATRIC CARE



CLINICAL CARE



750 POUND¹
WEIGHT CAPACITY
EVENLY DISTRIBUTED

AREAS OF USE
PACU
Rehab
Oncology
IV Therapy
Exam Room
Patient Room
Emergency Room
Dialysis (Facility)
Dialysis (In Home)
Nocturnal Dialysis
Physical Therapy
Pain Management
Post Operative Care
Same Day Surgery / ASC



Options:

* Model

TRC28750	■	■	
TRC28750-FB	■	■	■

Tilt Recliner with Swing-Away Footrest
3 inch Padded Seat & Backrest
Full Width Padded Leg Support & Footboard



Footrest model shown
TRC28750

Positions: INFINITE RECLINE AND TILT POSITIONING + CAREGIVER-ACTIVATED

Infinite Recline Positions: Allows Caregiver to Set a Position That is Most Comfortable for Patient, Caregiver-Activated Using a Hand Trigger Located on the Backrest Handle



back in upright position
seat in forward tilt position

reclining back in upright position
seat in reverse tilt position

reclining back in upright position
seat in forward tilt position

back in full recline position
seat in reverse tilt position

Features:

- Separate manual hand lever controls enable the individual back recline and seat tilt to function
- 5 inch swivel casters for ease of maneuverability: 2 Front Swivel and 2 Rear Locking
- Three inch, removable, high-density foam seat surface with fabric cover
- Removable front rigging
- Removable full length armrests
- Rear push handle for improved patient transport
- Optional full width padded leg support and full width footboard
- Backrest straps adjust by tightening or loosening for patient ultimate comfort

ACCESSORY DETAIL ON PAGE 39



REMOVABLE ARMRESTS



ADJUSTABLE REAR STRAPS



FIVE INCH CASTERS



REMOVABLE RIGGING



REAR PUSH HANDLE



REMOVABLE FOOTBOARD

Specifications:

COMPLETE SPECIFICATIONS ON PAGE 36

Overall Width		Overall Depth		Overall Depth fully reclined		Overall Height		Width between arms		Arm Width		Arm Height from floor		Seat Width		Seat Depth		Seat Height		Back Height above seat		Caster Diameter		Back Angle upright	Back Angle full recline	Seat Tilt forward	Seat Tilt reverse	Weight ¹ Capacity EVENLY DISTRIBUTED	
inch	cm†	inch	cm†	inch	cm†	inch	cm†	inch	cm†	inch	cm†	inch	cm†	inch	cm†	inch	cm†	inch	cm†	inch	cm†	inch	cm†	degrees	degrees	degrees	degrees	lb	kg†
32.25	81.92	49.50	125.73	58.75	149.23	53.00	134.62	28.00	71.12	2.25	5.72	28.50	72.39	27.50	69.85	20.00	50.80	19.50	49.53	32.00	81.28	5.00	12.70	10	36	52	2	750	340.19

*Ships Freight: request additional shipping quote †xxx in the product number is the placeholder for fabric choice † standard rounding method used † maximum weight capacity - evenly distributed - refer to user manual ★ options available at additional cost

Available Colors:



183 BLACK

page 27

•1 770.368.4700

www.gedroninc.com | www.grahamfield.com

grahamfield

GF4405

LUMEX[®]
by graham-field

The **Everyday Hip Chair** is ideal for people who have arthritis or have undergone hip or knee surgery. A seat height of 27 inches helps reduce flexion, joint stress and fatigue. High-density Seat and Back foam, adjustable height footrest and padded armrests.



EXTENDED CARE



CLINICAL CARE



HOME CARE



350
POUND¹
WEIGHT CAPACITY
EVENLY DISTRIBUTED

PACU	Rehab	Oncology	IV Therapy	Exam Room	Patient Room	Emergency Room	Dialysis (Facility)	Dialysis (In Home)	Nocturnal Dialysis	Physical Therapy	Pain Management	Post Operative Care	Same Day Surgery / ASC
■						■				■	■	■	■
AREAS OF USE													



Model

GF4405xxx

‡ xxx REPRESENTS FABRIC COLOR



Positions: FOOTREST HEIGHT

Adjustable Height Footrest: for Patient Comfort



Features:

- Ideal for people with arthritis or who have undergone hip or knee surgery.
- 27 inch seat height helps reduce flexion, joint stress, and fatigue
- High-density foam seat and back provide excellent comfort
- Adjustable height footrest
- Soft padded armrest for comfort



SOFT PADDED ARMREST



ADJUSTABLE FOOTREST

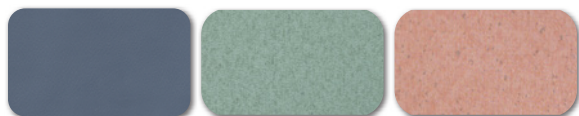
Specifications:

COMPLETE SPECIFICATIONS ON PAGE 36

Overall Width		Overall Depth		Overall Height		Width between arms		Arm Width		Arm Height from floor		Seat Width		Seat Depth		Seat Height		Back Height above seat		Weight ¹ Capacity EVENLY DISTRIBUTED	
inch	cm†	inch	cm†	inch	cm†	inch	cm†	inch	cm†	inch	cm†	inch	cm†	inch	cm†	inch	cm†	inch	cm†	lb	kg†
25.00	63.50	26.00	66.04	41.00	104.14	18.00	45.72	5.50	13.97	31.50	80.01	18.00	45.72	16.00	40.64	27.00	68.58	16.50	41.91	350	158.76

*Ships Freight: request additional shipping quote ‡ xxx in the product number is the placeholder for fabric choice † standard rounding method used ¹ maximum weight capacity - evenly distributed - refer to user manual

Available Colors:



427 BLUE RIDGE 857 JADE

863 ROSEWOOD

6200

The **Bariatric Phlebotomy Chair** is designed with both the patient and phlebotomist in mind. The sensible and affordable design offers a small footprint and modern style while keeping patient comfort and well-being the highest priority. One fully upholstered padded flip armrest with independent height adjustment is standard.



Single Flip Arm model shown with optional Wall Saver Wireframe

BARIATRIC CARE



EXTENDED CARE



CLINICAL CARE



800 POUND[†]
WEIGHT CAPACITY
EVENLY DISTRIBUTED

AREAS OF USE
PACU
Rehab
Oncology
IV Therapy
Exam Room
Patient Room
Emergency Room
Dialysis (Facility)
Dialysis (In Home)
Nocturnal Dialysis
Physical Therapy
Pain Management
Post Operative Care
Same Day Surgery / ASC



Options:

* Model

6200-xx	■	■
6200-DA-xx	■	■

Single Flip Arm

Dual Flip Arm

Wallsaver Wireframe

† xx REPRESENTS FABRIC COLOR

 6200 Product Info



Features:

- Fully upholstered padded seat, back, and armrests
- Includes wallsaver wireframe
- Powder coat frame finish - Foghorn
- Individual height adjustable armrests
- Available in 24 industry standard colors to complement most decors



POWDER COAT FINISH



ADJUSTABLE ARMREST



INDEPENDENT ARMREST



DUAL FLIP ARM
OPTIONAL



WALL SAVER WIREFRAME
STANDARD

Specifications:

COMPLETE SPECIFICATIONS ON PAGE 36

Overall Width		Overall Depth		Overall Height		Width between arms		Arm Width		Arm Height ⁸ from floor				Seat Width		Seat Depth		Seat Height		Back Width		Back Height from seat		Weight ¹ Capacity EVENLY DISTRIBUTED	
inch	cm†	inch	cm†	inch	cm†	inch	cm†	inch	cm†	inch	cm†	inch	cm†	inch	cm†	inch	cm†	inch	cm†	inch	cm†	inch	cm†	lb	kg
35.00	88.90	28.00	71.12	37.50	95.25	25.00	63.50	5.00	12.70	26.50	67.31	32.00	81.28	25.50	64.77	18.75	47.63	22.00	55.88	26.00	66.04	16.00	40.64	800	362.87

*Ships Freight: request additional shipping quote † xxxx in the product number is the placeholder for fabric choice ‡ standard rounding method used ¹ maximum weight capacity - evenly distributed - refer to user manual ² alters weight specs ★ options available at additional cost

Available Colors:

COLOR OPTIONS AND FABRIC SWATCHES  ERF Fabric Choices



9000 SERIES

LUMEX[®]
by graham-field

Physician Stools are manufactured in the USA with high quality materials to ensure a long life. Offering preferred stool features to meet the needs of an active facility. DEHP-free vinyl seat covering in 24 industry standard colors.

9000 SERIES Physician Exam Stool options include the choice of three hand controlled pneumatic assist height adjustment levers and three base style options.

7000 SERIES Physician Surgical Stool has a brushed aluminum base and hydraulic height adjustment is foot-controlled.



EXTENDED CARE
CLINICAL CARE

350 POUND[™]
WEIGHT CAPACITY
EVENLY DISTRIBUTED

PACU	Rehab	Oncology	IV Therapy	Exam Room	Patient Room	Emergency Room	Dialysis (Facility)	Dialysis (In Home)	Nocturnal Dialysis	Physical Therapy	Pain Management	Post Operative Care	Same Day Surgery / ASC
AREAS OF USE													





9501 Options:

★ black nylon composite base †

shown left	9501-xx	■			
	9501B-xx	■	■		
	9501-FR-xx	■		■	
	9501-BFR-xx	■	■	■	
shown above	9501-10BFR-xx		■	■	■

† xx REPRESENTS FABRIC COLOR

🔗 9501 Product Info

Standard Height
with Backrest
with Footring
Lab Height



9702 Options:

★ brushed aluminum base with toe caps †

shown left	9702-xx	■			
shown above	9702B-xx	■	■		
	9702-FR-xx	■		■	
	9702-BFR-xx	■	■	■	
	9702-10BFR-xx		■	■	■

† xx REPRESENTS FABRIC COLOR

🔗 9702 Product Info

Standard Height
with Backrest
with Footring
Lab Height



9903 Options:

★ polished aluminum base †

shown left	9903-xx	■			
	9903-FR-xx	■	■		
shown above	9903-10FR-xx		■	■	

† xx REPRESENTS FABRIC COLOR

🔗 9903 Product Info

Standard Height
with Footring
Lab Height



7408 Options:

★ brushed aluminum base †

shown above	7408-xx	■			
	7408CB-xx	■	■		
	7408B-xx	■		■	

† xx REPRESENTS FABRIC COLOR

🔗 7408 Product Info

Standard Height
with Crescent Back
with Backrest

Features:

- Seat diameter comfortably fits to most users
- Hydraulic or pneumatic assist height adjustment for ease of use
- Choice of 4 base styles to complement facility decor
- Choice of height adjustment lever options
- 3/4" (1.91 cm) thick composite substrate with steel reinforcement plate
- Wide diameter base with hard wheel casters for greater stability
- Backrest, seat height, and footring options
- Available in 24 industry standard colors to complement most decors

Specifications:

COMPLETE SPECIFICATIONS ON PRODUCT INFO PAGE

Series	Seat Diameter		Base Diameter with casters		Standard Seat Height		Lab Seat Height		Overall Height w/ Backrest				Footring Diameter		Caster Diameter		Shipping Weight ⁸		Weight ¹ Capacity EVENLY DISTRIBUTED		Pneumatic Hydraulic	Foot Control Single Lever D-Handle	360° Chrome Handle	
	inch	cm†	inch	cm†	low	high	low	high	low	high	low	high	low	high	lb	kg†	lb	kg†	method	release				
9501					18.50	46.99	24.00	60.96	24.50	62.23	35.00	88.90	33.00	83.82	39.00	99.06			20	9.07	■			
9702	16.00	40.64	24.00	60.96	17.50	44.45	23.00	58.42	23.50	59.69	34.00	86.36	32.50	82.55	37.50	95.25	18.00	45.72	22	9.98	■		■	
9903					18.00	45.72	23.00	58.42	22.00	55.88	32.00	81.28	18.00	45.72	23.00	58.42	2.00	5.08	23	10.43	■			■
7408					19.50	49.53	26.50	67.31	—	—	—	—	35.50	90.17	42.50	107.95	—	—	45	20.41	■	■		

*Ships Freight: request additional shipping quote † xxx in the product number is the placeholder for fabric choice † standard rounding method used ¹ maximum weight capacity - evenly distributed - refer to user manual ⁸ approximate measurement ★ options available at additional cost

Available Colors:

COLOR OPTIONS AND FABRIC SWATCHES 🔗 ERF Fabric Choices

HSS500

Hausted[®]
by graham-field

Hausted Surgical Stool is built for Performance and Surgeon comfort. Ideal for Eye, ENT and Plastic procedures. Hausted Surgical Stools are intended to be used to support a physician during diagnostic examinations or surgical procedures.



CLINICAL
CARE



**300
POUND**[†]
WEIGHT CAPACITY
EVENLY DISTRIBUTED

PACU	Rehab	Oncology	IV Therapy	Exam Room	Patient Room	Emergency Room	Dialysis (Facility)	Dialysis (In Home)	Nocturnal Dialysis	Physical Therapy	Pain Management	Post Operative Care	Same Day Surgery / ASC
							■						■
AREAS OF USE													



Options:

* Model

	Saddle Seat	Wedge Seat	Water Drop Seat	Reverse Water Drop Seat
HSS500-S	■			
HSS500-W		■		
HSS500-WD			■	
HSS500-RWD				■

HSS500 Product Info



Seat Options:

Seat Width:		Seat Depth:		
inch	cm†	inch	cm†	
17.00	43.18	17.65	44.83	Saddle
13.50	34.29	18.00	45.72	Wedge
15.75	40.00	18.00	45.72	Water Drop
15.75	40.00	18.00	45.72	Reverse Water Drop

Accessories:

* sold separately

item no.†

Riser Kit:
adds 2 inches / 5.08 cm

H081024

Features:

- 360° rotating urethane armrest for comfortable arm positioning
- Lightweight, maneuverable unit fits easily through doorways
- Foot-controlled hydraulics with Three-Spindle Base
- Dual-density Foam Seat with Dura-Gel® Insert for Enhanced Comfort
- 180° Armrest Support for more Stable Arm Positioning
- Dual 3 inch Tente® Casters for Greater Stability
- ABS Thermoformed Hood for Easy Cleaning
- Adjustable Contoured Backrest
- Front Locking System

Specifications:

	inch	cm†
Overall Width: ⁸	25.50	64.77
Overall Depth: ⁸	32.25	81.92
Base Width: ⁸	24.00	60.96
Base Depth: ⁸	28.50	72.39
Armrest Width: ⁸	4.75	12.07
Armrest Length: ⁸	12.00	30.48



180° ARMREST SUPPORT



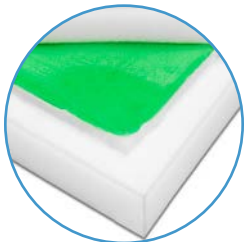
URETHANE ARMREST



FOOT-CONTROLLED HYDRAULICS



TENTE® CASTERS



DUAL-DENSITY FOAM SEAT

Specifications:

COMPLETE SPECIFICATIONS ON PRODUCT INFO PAGE

Overall Height		Armrest Height <i>from seat</i>				Seat Height				Seat Thickness	Back Rest Width ⁸	Back Rest Height <i>from seat</i>				Armrest Rotation	Armrest Support	Backrest Tilt <i>from vertical</i>	Caster Diameter	Shipping Weight ⁸		Weight ¹ Capacity <small>EVENLY DISTRIBUTED</small>						
<i>low</i>	<i>high</i>	<i>low</i>	<i>high</i>	<i>low</i>	<i>high</i>	<i>low</i>	<i>high</i>	<i>low</i>	<i>high</i>	inch	cm†	<i>low</i>	<i>high</i>	<i>low</i>	<i>high</i>	degrees	degrees	degrees	inch	cm†	lb	kg†	lb	kg†				
21.00	53.34	28.00	71.12	7.00	17.78	15.00	38.10	21.50	54.61	28.50	72.39	3.00	10.16	14	35.56	10.50	26.67	12.50	31.75	360	180	20	3.00	7.62	74	33.57	300	136.08

*Ships Freight: request additional shipping quote †xxxx in the product number is the placeholder for fabric choice ‡ standard rounding method used

¹ maximum weight capacity - evenly distributed - refer to user manual

⁸ approximate measurement * options available at additional cost - accessories sold separately

Available Colors:

AVAILABLE IN BLACK VINYL ONLY

page 35

•1 770.368.4700

www.hausted.com | www.grahamfield.com

graham
field

	FR601 Pivot-Arm Clinical Care Recliner		FR597 Ortho-Biotic II Recliner		FR566G Deluxe Clinical Care Recliner		FR566DG Deluxe Drop-Arm Clinical Care Recliner		FR587W Extra Wide Clinical Care Recliner		FR587WD Extra Wide Drop-Arm Clinical Care Recliner		FR577RG Multi-Care Recliner		FR588W Powered Bariatric Clinical Care Recliner		574G Three Position Preferred Care Recliner		FR565WG Extra Wide Preferred Care Recliner	
	inch	cm [†]	inch	cm [†]	inch	cm [†]	inch	cm [†]	inch	cm [†]	inch	cm [†]	inch	cm [†]	inch	cm [†]	inch	cm [†]	inch	cm [†]
Overall Width:	34.50	87.63	33.00	83.82	31.25	79.38	32.50	82.55	33.00	83.82	35.75	90.81	31.50	80.01	38.00	96.52	24.50	62.23	32.00	81.28
Overall Width: <i>with side table(s) up</i>	54.00	137.16	45.00	114.30	51.50	130.81	52.50	133.35	53.50	135.89	58.25	147.96	52.00	132.08	48.00	121.92	—	—	—	—
Overall Depth:	38.00	96.52	37.00	93.98	37.50	95.25	38.00	96.52	45.50	115.57	44.00	111.76	40.50	102.87	59.00	149.86	41.00	104.14	37.00	93.98
Overall Depth: <i>fully reclined</i>	68.00	172.72	72.00	182.88	71.50	181.61	71.50	181.61	71.00	180.34	71.00	180.34	69.50	176.53	77.00	195.58	65.00	165.10	66.50	168.91
Overall Depth: <i>trendelenburg position</i>	72.00	182.88	73.00	185.42	75.00	190.50	75.00	190.50	78.00	198.12	78.00	198.12	73.50	186.69	77.00	195.58	—	—	—	—
Overall Height:	51.50	130.81	46.00	116.84	49.50	125.73	50.50	128.27	50.00	127.00	50.00	127.00	48.00	121.92	53.00	134.62	47.00	119.38	48.00	121.92
Width Between Arms:	25.00	63.50	24.00	60.96	21.50	54.61	22.00	55.88	23.25	59.06	26.50	67.31	21.50	54.61	24.50	62.23	20.00	50.80	24.00	60.96
Arm Width:	3.00	7.62	3.50	8.89	4.50	11.43	4.50	11.43	4.50	11.43	4.50	11.43	4.50	11.43	5.00	12.70	2.00	5.08	4.50	11.43
Arm Height from Floor: <i>drop-arm up</i>	28.50	72.39	26.75	67.95	28.50	72.39	28.00	71.39	28.00	71.39	27.50	69.85	27.50	69.85	31.00	78.74	26.00	66.04	28.00	71.39
Arm Height from Seat: <i>at mid section</i>	6.50	16.51	7.00	17.78	8.00	20.32	6.00	15.24	7.00	17.78	7.50	19.05	6.50	16.51	6.00	15.24	8.00	20.32	8.50	21.59
Seat Width:	22.50	57.15	23.00	58.42	20.50	52.07	20.50	52.07	24.00	60.96	24.00	60.96	21.50	54.61	26.50	67.31	19.00	48.26	24.00	60.96
Seat Depth:	19.00	48.26	20.00	50.80	19.00	48.26	19.00	48.26	20.50	52.07	20.50	52.07	19.50	49.53	23.50	59.69	19.00	48.26	19.50	49.53
Seat Height:	22.00	68.58	21.00	53.34	22.25	56.52	22.50	57.15	22.00	55.88	22.00	55.88	20.50	52.07	25.50	64.77	20.00	50.80	20.00	50.80
Back Width:	30.50	77.47	23.00	58.42	27.50	69.85	27.50	69.85	30.50	77.47	30.50	77.47	21.50	54.61	32.00	81.28	19.50	49.53	24.00	60.96
Back Height: <i>above seat</i>	30.00	76.20	30.00	76.20	32.00	81.28	30.00	76.20	33.50	85.09	33.50	85.09	34.00	86.36	35.00	88.90	29.00	73.66	30.50	77.47
Caster Diameter:	5.00	12.70	4.00	10.16	5.00	12.70	5.00	12.70	5.00	12.70	5.00	12.70	5.00	12.70	5.00	12.70	5.00	12.70	5.00	12.70
Side Table Width:	10.00	25.40	10.00	25.40	10.00	25.40	10.00	25.40	10.00	25.40	10.00	25.40	10.00	25.40	10.00	25.40	—	—	—	—
Side Table Length:	19.00	48.26	19.00	48.26	19.00	48.26	19.00	48.26	19.00	48.26	19.00	48.26	19.00	48.26	19.00	48.26	—	—	—	—
Back Angle: <i>upright</i>	degree		degree		degree		degree		degree		degree		degree		degree		degree		degree	
Back Angle: <i>upright</i>	120		120		120		120		120		120		120		110		105		110	
Back Angle: <i>legrest extended</i>	135		139		130		130		125		125		125		varies		105		varies	
Back Angle: <i>fully reclined</i>	160		180		150		150		135		135		135		varies		110		varies	
Product Weight:	lb	kg [†]	lb	kg [†]	lb	kg [†]	lb	kg [†]	lb	kg [†]	lb	kg [†]	lb	kg [†]	lb	kg [†]	lb	kg [†]	lb	kg [†]
Product Weight:	157 ²	71.21	170 ²	77.11	100 ²	45.36	102 ²	46.27	103 ²	46.72	105 ²	47.627	89	40.37	285	129.27	96	43.54	80	36.29
Weight Capacity: ¹ <i>-EVENLY DISTRIBUTED</i>	400	181.44	350	158.76	400	181.44	400	181.44	450	204.12	450	204.12	350	158.76	700	317.52	250	113.40	400	181.44
Shipping Weight: ⁸	197 ²	89.36	210 ²	95.25	140 ²	63.50	142 ²	64.41	143 ²	64.86	145 ²	65.77	129	58.51	308	139.71	103	46.72	120	54.43
	area of use		area of use		area of use		area of use		area of use		area of use		area of use		area of use		area of use		area of use	
PACU	■		■		■		■		■		■		■		■		■		■	
Rehab	■		■		■		■		■		■		■		■		■		■	
Oncology	■		■		■		■		■		■		■		■		■		■	
IV Therapy	■		■		■		■		■		■		■		■		■		■	
Exam Room	■		■		■		■		■		■		■		■		■		■	
Patient Room	■		■		■		■		■		■		■		■		■		■	
Emergency Room	■		■		■		■		■		■		■		■		■		■	
Dialysis (Facility)	■		■		■		■		■		■		■		■		■		■	
Dialysis (In Home)	■		■		■		■		■		■		■		■		■		■	
Nocturnal Dialysis	■		■		■		■		■		■		■		■		■		■	
Physical Therapy	■		■		■		■		■		■		■		■		■		■	
Pain Management	■		■		■		■		■		■		■		■		■		■	
Post Operative Care	■		■		■		■		■		■		■		■		■		■	
Same Day Surgery / ASC	■		■		■		■		■		■		■		■		■		■	
	market		market		market		market		market		market		market		market		market		market	
Bariatric Care	■		■		■		■		■		■		■		■		■		■	
Extended Care	■		■		■		■		■		■		■		■		■		■	
Clinical Care	■		■		■		■		■		■		■		■		■		■	
Homecare	■		■		■		■		■		■		■		■		■		■	
	FR601		FR597		FR566G		FR566DG		FR587W		FR587WD		FR577RG		FR588W		574G		FR565WG	



FR565G Preferred Care Recliner		FR565DG Drop-Arm Preferred Care Recliner		FR565TG Tilt-in-Space Drop-Arm Preferred Care Recliner		7150P Wide Bariatric Clinical Care Recliner		7155P Bariatric Clinical Care Recliner		TRC Bariatric Tilt-Recline Chair		GF4405 Everyday Hip Chair		6200 Bariatric Phlebotomy Chair		
inch	cm†	inch	cm†	inch	cm†	inch	cm†	inch	cm†	inch	cm†	inch	cm†	inch	cm†	
28.00	71.12	28.00	71.12	28.00	71.12	38.25	97.16	34.25	87.00							
—	—	—	—	—	—	—	—	—	—	Overall Width:	32.25	81.92	25.00	63.50	35.00	88.90
36.00	91.44	36.00	91.44	36.00	91.44	68.00	172.72	68.00	172.72	Overall Depth: <i>with side table(s) up</i>	49.50	125.73	26.00	66.04	28.00	71.12
66.00	167.64	66.00	167.64	—	—	67.50	171.45	67.50	171.45	Overall Depth: <i>fully reclined</i>	58.75	149.225	—	—	—	—
—	—	—	—	—	—	—	—	—	—	Overall Depth: <i>fully reclined and full tilt</i>	69.00	175.26	—	—	—	—
48.00	121.92	48.00	121.92	48.00	121.92	47.50	120.65	47.50	120.65	Overall Depth: <i>trendelenburg position</i>	53.00	134.62	41.00	104.14	37.50	95.25
19.00	48.26	19.50	49.53	19.50	49.53	29.50	74.93	25.50	64.77	Overall Height:	28.00	71.12	18.00	45.72	25.00	63.50
4.50	11.43	4.50	11.43	4.50	11.43	4.50	11.43	4.50	11.43	Width Between Arms:	2.25	5.72	2.75	6.99	5.00	12.70
26.00	66.04	26.75	67.95	26.75	67.95	25.50	64.77	25.50	64.77	Arm Width:	28.50	72.39	31.50	80.01	26.50	67.31
8.00	20.32	8.00	20.32	8.00	20.32	7.00	17.78	7.00	17.78	Arm Height from Floor: <i>drop-arm up</i>	28.50	72.39	31.50	80.01	32.00	81.28
19.00	48.26	19.00	48.26	19.00	48.26	29.25	74.30	25.25	64.14	Arm Height from Floor: <i>highest point or position</i>	8.00	20.32	5.50	13.97	3.50	8.89
19.50	49.53	19.50	49.53	19.50	49.53	19.25	48.90	19.25	48.90	Arm Height from Seat: <i>at mid section</i>	8.00	20.32	5.50	13.97	10.00	25.40
20.00	50.80	22.00	55.88	22.00	55.88	21.00	53.34	21.00	53.34	Seat Width:	27.50	47.625	18.00	45.72	25.50	64.77
19.00	48.26	19.00	48.26	19.00	48.26	29.25	74.30	25.25	64.14	Seat Depth:	20.00	50.80	16.00	40.64	18.75	47.63
31.00	78.74	31.00	78.74	31.00	78.74	33.00	83.82	33.00	83.82	Seat Height:	19.50	49.53	27.00	68.58	22.00	55.88
5.00	12.70	5.00	12.70	5.00	12.70	5.00	12.70	5.00	12.70	Back Width:	28.75	73.03	18.00	45.72	26.00	66.04
25.50	64.77	25.50	64.77	25.50	64.77	—	—	—	—	Back Height: <i>above seat</i>	32.00	81.28	16.50	41.91	16.00	40.64
15.00	38.10	15.00	38.10	15.00	38.10	—	—	—	—	Caster Diameter:	5.00	12.70	—	—	—	—
										Activity Tray Width:						
										Activity Tray Length:						
degree	degree	degree	degree	degree	degree	degree	degree	degree	degree	Back Angle: <i>upright</i>	degree	degree	degree	degree	degree	degree
110	110	110	110	105	105	105	105	105	105	Back Angle: <i>legrest extended</i>	2	—	—	—	—	—
varies	varies	—	—	—	—	—	—	—	—	Back Angle: <i>fully reclined</i>	52	—	—	—	—	—
150	150	—	—	135	135	135	135	135	135		100	—	—	—	—	—
											126	—	—	—	—	—
lb	kg†	lb	kg†	lb	kg†	lb	kg†	lb	kg†	Product Weight:	lb	kg†	lb	kg†	lb	kg†
69	31.30	70	31.75	70	31.75	154 ²	69.85	193 ²	87.54	Product Weight:	174	78.93	40	18.14	52 ²	23.59
250	113.40	250	113.40	250	113.40	850	385.55	850	385.55	Weight Capacity: ¹ <i>-EVENLY DISTRIBUTED</i>	750	340.19	350	158.76	800	362.87
76	34.47	76	34.47	78	35.38	194	88.00	233	105.69	Shipping Weight: ⁸	214 ²	97.07	45	20.41	55 ²	24.95
area of use	area of use	area of use	area of use	area of use	area of use	area of use	area of use	area of use	area of use	area of use	area of use	area of use	area of use	area of use	area of use	area of use
■	■	■	■	■	■	■	■	■	■	PACU	■	■	■	■	■	■
■	■	■	■	■	■	■	■	■	■	Rehab	■	■	■	■	■	■
■	■	■	■	■	■	■	■	■	■	Oncology	■	■	■	■	■	■
■	■	■	■	■	■	■	■	■	■	IV Therapy	■	■	■	■	■	■
■	■	■	■	■	■	■	■	■	■	Exam Room	■	■	■	■	■	■
■	■	■	■	■	■	■	■	■	■	Patient Room	■	■	■	■	■	■
■	■	■	■	■	■	■	■	■	■	Emergency Room	■	■	■	■	■	■
■	■	■	■	■	■	■	■	■	■	Dialysis (Facility)	■	■	■	■	■	■
■	■	■	■	■	■	■	■	■	■	Dialysis (In Home)	■	■	■	■	■	■
■	■	■	■	■	■	■	■	■	■	Nocturnal Dialysis	■	■	■	■	■	■
■	■	■	■	■	■	■	■	■	■	Physical Therapy	■	■	■	■	■	■
■	■	■	■	■	■	■	■	■	■	Pain Management	■	■	■	■	■	■
■	■	■	■	■	■	■	■	■	■	Post Operative Care	■	■	■	■	■	■
■	■	■	■	■	■	■	■	■	■	Same Day Surgery / ASC	■	■	■	■	■	■
market	market	market	market	market	market	market	market	market	market	market	market	market	market	market	market	market
■	■	■	■	■	■	■	■	■	■	Bariatric Care	■	■	■	■	■	■
■	■	■	■	■	■	■	■	■	■	Extended Care	■	■	■	■	■	■
■	■	■	■	■	■	■	■	■	■	Clinical Care	■	■	■	■	■	■
■	■	■	■	■	■	■	■	■	■	Homecare	■	■	■	■	■	■



CLINICAL CARE ACCESSORIES*

FR601, FR597, FR588, FR587, FR577, & FR566 SERIES



HEADREST COVER

Protects and extends the life of recliners vinyl. Provides added protection from hair oil, hairspray, coloring agents, etc.

Item No. HRC566xx ■ FR566 series
 Item No. HRC587xx ■ FR587 series
 Item No. HRC577xx ■ FR577 series
 Item No. HRC601xx ■ FR601 series



HEADREST SKIRT

Easily mounts to recliner back and provides added protection to head-section vinyl from hair oil, hairspray, coloring agents, etc.

Item No. HRSxxx
 ■ FR566 ■ FR587 ■ FR577 ■ 574G
 ■ FR597 ■ FR601 series



LEG EXTENSIONS

Fits all round tube frame designs. Raises recliner by four inches (10.16 cm)⁶.

Item No. 5699G
 ■ FR566G ■ FR587W ■ FR577RG



FOLD DOWN SIDE TABLES

Smooth surface edges makes cleaning and disinfection easier. Side tables are level with armrest in the up position.

Item No. FR597GTBLMNT^{4,5}
 ■ FR597 — single left side table only



SWING-AWAY FOLDING TABLE

360 degree swivel table. Scratch resistant table top is durable and easy to clean. Fold down and out of the way when not needed.

Item No. SAFT30 ■ FR588 series
 Item No. SAFT20-601 ■ FR601 series
 Item No. SAFT20-597 ■ FR597 series
 Item No. SAFT10
 ■ FR587, ■ FR577, ■ FR566 series

EXTENDED CARE ACCESSORIES*

FR565 SERIES



HEAD SUPPORT

Soft, comfortable head support helps resident's head alignment. Easily installed without tools.

Item No. FR56461xxxx
 ■ FR565G ■ FR565DG ■ FR565TG



BODY BOLSTER

Comfortably supports and helps keep resident positioned in recliner. Easily installed without tools.

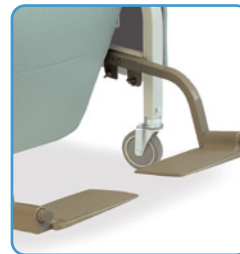
Item No. FR56471xxxx
 ■ FR565G ■ FR565DG ■ FR565TG



FOOT-DROP ASSEMBLY

Helps keep resident's feet positioned correctly to help avoid foot-drop. NOTE: Item does not fit FR565WG.

Item No. 5657Gxxx
 ■ FR565G ■ FR565DG ■ FR565TG



ADJUSTABLE FOOTREST

Enhances patient positioning and comfort and aids in the prevention of foot-drop. The FR565 footrests tip up and out of way. Attaches without the use of tools.

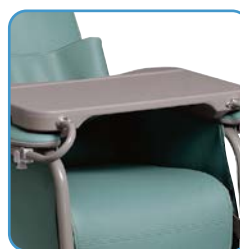
Item No. LX5640G
 ■ FR565 series



ANTI-TIP WHEELS

Designed to provide extra confidence that recliner will not tip backwards.

Item No. LX5656G
 ■ FR565WG — included
 ■ FR565 series



ACTIVITY TRAY TABLE

Smooth surface edges make cleaning and disinfection easier. Tray table has receiving arms to slide the table inward or outward to a comfortable depth. "Lock/Lock-out" function provides flexibility to the caregiver. Can be stored on the side of the chair when removed.

Item No. 5644G
 ■ FR565G ■ FR565DG ■ FR565TG

*Ships Freight: request additional shipping quote †xxxx in the product number is the placeholder for fabric choice
 † standard rounding method used ‡ maximum weight capacity - evenly distributed - refer to user manual
 2 alters weight specs 3 pullout footplate is not compatible available with extended legrest option: alters weight specs
 4 supports a single table left side only 5 requires factory installation include item with purchase
 6 adjust height specs: +4 inches (+10.16 cm) 8 approximate measurement
 * options available at additional cost - accessories sold separately



UNIVERSAL ACCESSORIES★

UNIVERSAL BED SOCKET IV POLE

Easily slides into IV Pole Attachment. Internal rubber bumpers ensure silent operation and reduce shock. Constructed of durable, anodized aluminum tubing. Adjustable height from 35 to 65 inches (88.90 - 165.10 cm).

Item No. 2101A

IV POLE ATTACHMENT

For use with Bed Socket IV Pole. FR601 & FR597 series require factory installation - add item with order.

Item No. FR601IVMNT⁵ (shown left)

■ FR5601

Item No. FR597GIVMNT^{4,5}

■ FR597

Item No. FR5782RG (shown right)

■ FR566 ■ FR587 ■ FR577

■ 574G ■ FR577 ■ FR565 series



UNIVERSAL HEADREST PILLOW

The unique shape features an angled design that offers the patient a separate level of support depending on whether the small contour or large contour is placed under the patient's head. Hook and loop attachment allows for variable positioning along back of recliner.

Item No. FR5659xxxUS



TRC ACCESSORIES★

FULL WIDTH PADDED LEG SUPPORT

Item No. G27220

FULL WIDTH FOOTBOARD

Item No. G27225



INDEX

RECLINERS

FR601 Series Pivot-Arm Clinical Care Recliner	2
FR597 Series Ortho-Biotic II Recliner	4
FR566G Series Deluxe Clinical Care Recliner	6
FR566DG Series Deluxe Drop-Arm Clinical Care Recliner	8
FR587W Series Extra Wide Clinical Care Recliner	10
FR587WD Series Extra Wide Drop-Arm Clinical Care Recliner	12
FR577RG Series Multi-Care Recliner	14
FR588W Powered Bariatric Clinical Care Recliner	16
574G Three Position Preferred Care Recliner	18
FR565WG Extra Wide Preferred Care Recliner	20
FR565G Preferred Care Recliner	22
FR565DG Drop-Arm Preferred Care Recliner	22
FR565TG Tilt-in-Space Preferred Care Recliner	22
7150 Series Bariatric Clinical Care Recliner	24

CHAIRS

TRC Bariatric Tilt-Recline Chair	26
GF4405 Everyday Hip Chair	28
6200 Phlebotomy Chair	30

STOOLS

9000 Series Physician Exam Stool	32
HSS500 Series Surgeons Stool	34
Chair and Recliner Specifications	36
Recliner Accessories★	38



Graham-Field is a leader in healthcare seating solutions including Patient Handling, Patient Transport, Exam Room, Resident Room, Dining Room, and Lobby Area Seating. Our products are designed to improve outcomes across the care continuum.

Visit www.grahamfield.com to discover our complete Healthcare Seating Solutions to help you streamline care, drive efficiency, and enhance safety for your patients and staff.

PATIENT HANDLING

EXAM ROOM

PATIENT TRANSPORT

LOBBY AREA



Healthcare Seating is designed and engineered for patient and caregiver comfort and safety across a variety of applications.

GF Health Products, Inc. is an ISO 13485:2016 / MDSAP Certified Company

published **March 2026**

Images are digital reproductions, perceived texture and coloring may vary on finished product. Monitor and printer settings may create variations in color.

+1 770.368.4700

Information contained herein is subject to change without notice. The most current and complete product information can be found on our website.

www.grahamfield.com



© 2016, GF Health Products, Inc. All Rights Reserved. Dura-Gel, Lumex, Gendron, and Hausted are registered trademarks of GF Health Products, Inc. Tente is a registered trademark of TENTE International GmbH.

graham field

GF16000142RevF26