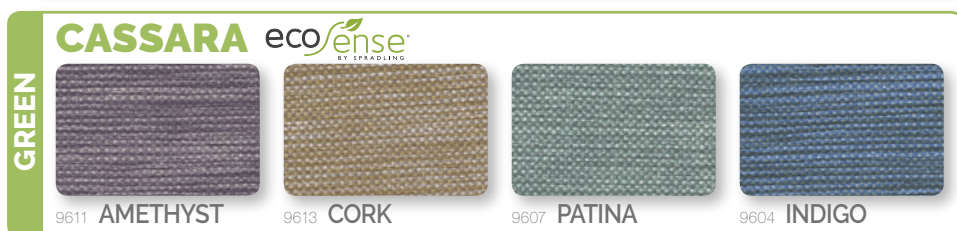


CLINICAL CARE SEATING

HIGH PERFORMANCE UPHOLSTERY

LUMEX
by graham-field



Composition & Backing

	DOL	PAT	REN	GUA	SAV	CAS	MOD	MAI
PVC	—	■	■	■	■	—	■	■
PU	■	—	—	—	—	—	—	—
TPE	—	—	—	—	—	■	—	—
Polyester Backing (100%)	—	—	—	—	—	■	—	—
Polyester Backing Hi-Loft™ (100%)	—	—	■	—	■	—	■	—
Polyester Backing Ultra Hi-Loft™ (100%)	—	—	—	■	—	—	—	—
Polyester Backing Hi-Loft™ RPET (100%)	—	—	—	—	—	—	—	■
Polyester / Cotton Backing	—	■	—	—	—	—	—	—
Rayon Backing (100%)	■	—	—	—	—	—	—	—
Weight (oz/liner yd)	15	34	32	30	30	22	26	31
Roll Size (yd)	30	30	30	30	30	30	30	30
Roll Width (inch)	54	54	54	54	54	54	54	54

Flammability Codes*

	DOL	PAT	REN	GUA	SAV	CAS	MOD	MAI
NFPA 260 Cover Fabric - Class 1	—	■	■	■	■	■	■	■
UFAC Fabric Class 1	—	■	■	■	■	■	■	■
CAL TB 117-2013	■	■	■	■	■	■	■	■
FMVSS 302	—	■	—	—	—	■	—	—
EU/US:IMO Res. MSC.307 (88) (FTP2010)	—	—	—	—	—	—	—	■
BS 5852 - UK Source 0	■	—	—	—	—	—	—	—

Finishes & Performance

	DOL	PAT	REN	GUA	SAV	CAS	MOD	MAI
PBG PERMABLOK [®] PERMAGUARD [®] ADVANCED VINYL PROTECTION	—	—	—	■	■	—	—	—
PERMABLOK ADVANCED VINYL PROTECTION	—	■	■	—	—	—	—	■
PERMABLOK PLUS ⁺ ADVANCED VINYL PROTECTION	—	—	—	—	—	—	■	—
SUREGUARD ™	—	—	—	—	—	■	—	—
Abrasion Resistance (k) CFFA-1 ASTM D-4157-02	100	100	100	100	100	100	100	100
Antibacterial Protection (hours)	—	—	—	1k	—	—	—	—
Anti-Static ASTM D257	—	■	■	■	■	■	■	■
Blue Wool (hours) AATCC TM 16-3 / NTC 1479 / CFFA-2a	—	1k	1k	1k	1k	1k	1k	1k
Denim Stain Resistance CFFA70	—	■	■	■	■	■	■	—
Mildew Resistance ASTM G21	—	—	■	■	—	—	■	—
Stain Resistance in Healthcare Environment CFFA142	—	■	■	■	■	■	■	■
Sulfide Stain Resistance Fisher Body TM31-12	—	■	■	■	■	—	■	■
CFFA-HEALTHCARE-201C	—	■	■	■	■	■	■	■
QUV Stabilized Pigments (hours)	650	—	—	650	—	—	—	—
Wyzenbeek Cotton Duck	#10	#10	#10	#10	#10	#10	#10	#10
Cold Crack (F)	-10°	-20°	-20°	-10°	-10°	-10°	-10°	-10°

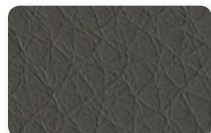
COLOR VARIATIONS Swatches are digital reproductions. Perceived texture and coloring may vary on finished product. Monitor and printer settings will effect appearance of color.

* This term and any corresponding data refer to the typical performance in the specific tests indicated and should not be construed to imply the behavior of this or any other material under actual fire conditions

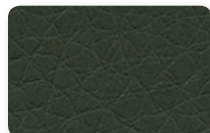
CLINICAL CARE SEATING
published April 2025

PERFORMANCE

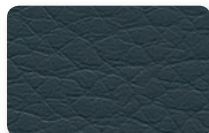
DOLCE



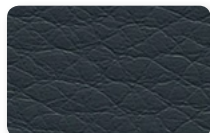
6727 METEOR



6717 MOSS



6724 JET



6725 INDIGO



SPRADLING Recommended Care & Cleaning

Clean within 24 hours to avoid permanent stains in the surface. After this time has elapsed, effectiveness drops to 50%.



We recommend cleaning at least once a week to extend the lifespan of the upholstery, which will prevent dirt and contamination buildup and permanent staining. In the event of a spill, wipe off any excess right away with a dry white cloth or fabric, but careful not to spread to remaining surface.



Clean the whole surface in a circular motion using pH neutral liquid hand soap and water (1 part soap to 9 parts water). Check the Approved Cleaners guide for recommended cleaning products. Wipe with a clean damp cloth to get rid of any excess soap. Repeat as needed and then let dry.



† If there is any buildup that cannot be removed with soapy water, a mixture of alcohol and water (1 part isopropyl alcohol to 9 parts water) can be used as a last resort.

Remember, using alcohol on a regular basis can affect the properties of the product.



Once a month, you can use a soft-bristle brush for a deeper cleaning. Remember, light colors need more care, more often.

† This section of cleaning guide does not apply to Dolce.

Disinfectants

There is a wide variety of available biocides that include bleaches, peroxides and quaternary ammonium products, among others. They should always be used at the recommended dilution, never in concentrated form. To prolong the life of coated fabrics, the disinfectants should be rinsed off after each use.

If you need to disinfect the product because it has come into contact with organic material (blood, urine or fecal matter), check the disinfection guide for appropriate cleaning products. Clean with a clean white cloth or fabric. If you choose to use a bleach solution, only use 0.5% concentration (1 part bleach to 10 parts water). Rinse and wipe with a clean damp cloth to get rid of any excess and dry.

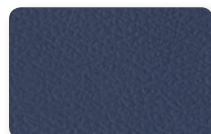
For Color Transfer

Our products don't transfer onto other materials, but some clothing items (like jeans, microfibers and dark fabrics) could transfer their color to the coated fabrics, depending on how they are dry-cleaned. This happens more with dampness and higher temperatures and is irreversible. Neither GF Health Products, Inc. nor Spradling International, Inc.® is responsible for any damages caused in this manner. Please check compatibility when using this product in combination with painted or varnished surfaces.

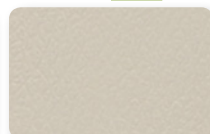
PREMIERE COLLECTION

PATRIOT PLUS

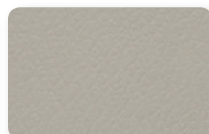
NEO



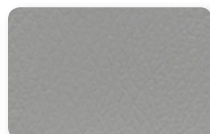
432 IMPERIAL BLUE



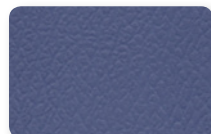
8602 OATMEAL



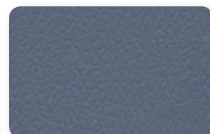
8604 CONCRETE



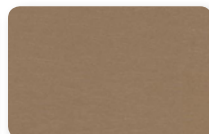
8567 DOVE



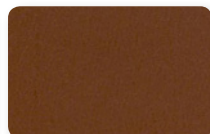
454 ROYAL BLUE



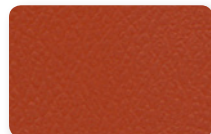
427 BLUERIDGE



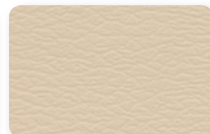
8584 TAUPE



8516 CHESTNUT



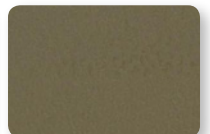
8611 TERRA COTTA



8504 SAND



8533 PORT



8626 EUCALYPTUS

PREMIERE COLLECTION

RENAISSANCE

NEO



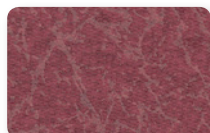
9214 STEEL BLUE



9201 COBBLESTONE



9205 GYPSUM



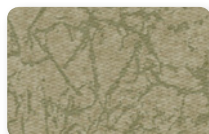
9208 WINEBERRY



9203 PYRITE



9207 ICE BLUE



9210 CYPRESS



9212 BLUE JADE

COLOR VARIATIONS Swatches are digital reproductions. Perceived texture and coloring may vary on finished product. Monitor and printer settings will effect appearance of color.

FABRIC AVAILABILITY Current at time of publication and subject to change without notice. Contact Customer Service for the most current availability. +1 770.368.4700 cs@grahamfield.com



SPRADLING®

Cleaning Guides specific for each finish technology. (www.spradling.group)

Guide to Healthcare Surface Disinfection for the Real World. (www.spradling.group)

Note: This guide has recommendations for properly using and cleaning these products. Users are responsible for using and cleaning the coated fabrics safely with products that don't affect the surface, composition or, as a result, their performance and lifespan. The information in this cleaning guide refers to performance in specific tests conducted under laboratory conditions. Cleaning results may vary depending on the size of the stain, cleaning product used and time the surface is exposed. This information is not a guarantee and does not relieve the user from the responsibility of the proper and safe use of the product and referenced cleaning agents. Neither Spradling International, Inc.® nor GF Health Products, Inc. have a relationship with the manufacturers of any cleaning products.

GF Health Products, Inc. is an
ISO 13485:2016 / MDSAP Certified Company

Color variations may occur due to monitor or printer settings.

+1 770.368.4700

Information contained herein is subject to change without notice.
The most current and complete product information can be found on our website.

www.grahamfield.com



© 2015, GF Health Products, Inc. All Rights Reserved.
Spradling, Neo, EcoSense, PBG+, Permaguard, Permablock Plus,
and Sureguard are trademarks of Spradling Holdings, Inc.
Lumex is a registered trademark of GF Health Products, Inc.

CLINICAL CARE SEATING
published April 2025

graham field

GF-14000068Rev/25