

# OVERBED TABLES



# OVERBED TABLES

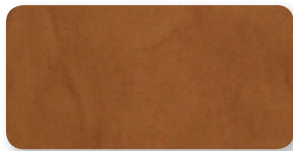
The Lumex Overbed Table combines an attractive, ergonomic design with features that reduce infection control issues by minimizing areas in which dust and dirt can accumulate. Manufactured with the lowest base in the industry, our Overbed tables move easily under any hospital bed or recliner.

## Features:

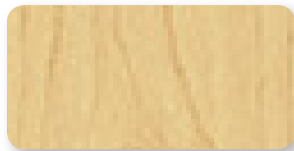
- Lowest profile base on the market designed to fit under any hospital bed
- Laminate or Thermofoil top that provides durability
- Exposed Graphite Grey steel U base with no plastic cover allows for easy cleaning of base and casters
- Available in 3 attractive finishes: Medium Oak, Hardrock Maple and Candlelight
- Seamless spill edge top<sup>2</sup> holds up to 36 oz
- Easy, one-hand activated secondary surface reduces infection control issues and eliminates hidden spaces between surfaces for bacteria to collect
- Integrated cup holders can hold soda cans, water bottles and medication<sup>2</sup>
- Optional Vanity drawer with mirror slides out from either side of the table
- Integrated accessory rail on both sides of column to easily transfer accessories such as cord wraps, IV hooks, urinal hooks and storage baskets from headwall rails
- Shock-absorbent gas spring cylinder for easy height adjustment
- Designed to support up to 100 lb of evenly distributed weight
- Two (2) Year Limited Warranty



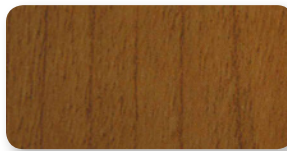
## Standard Top Finishes:



CL CANDLELIGHT



HM HARD ROCK MAPLE



MO MEDIUM OAK

## Options:

*Item No.	Single Top	Single + Flip Top	Laminate Top	Thermofoil Top	Medium Oak	Hardrock Maple	Candlelight
GF9000-LSTM0	■	■	■	■	■		
GF9000-LSTHM	■	■	■	■		■	
GF9000-LSTCL	■	■	■	■			■
GF9000-TSTM0	■			■	■		
GF9000-TSTHM	■			■		■	
GF9000-TSTCL	■			■			■
GF9000-TDTM0		■		■	■		
GF9000-TDTHM		■		■		■	
GF9000-TDTCL		■		■			■

## Specifications:

Overall Width		Overall Depth		Overall Height Range				Main Top Width		Flip Top Width		Top Depth		Product <sup>8</sup> Weight		Weight <sup>1</sup> Capacity	
inch	cm <sup>†</sup>	inch	cm <sup>†</sup>	low	high	inch	cm <sup>†</sup>	inch	cm <sup>†</sup>	inch	cm <sup>†</sup>	inch	cm <sup>†</sup>	lb	kg <sup>‡</sup>	lb	kg <sup>‡</sup>
46.00	116.84	19.00	48.26	28.00	71.12	44.00	111.76	32.00	81.28	13.50	34.29	17.00	43.18	41	18.60	100	45.36

<sup>†</sup> standard rounding method used

<sup>1</sup> maximum weight capacity - evenly distributed - refer to user manual

<sup>2</sup> thermofoil tops only

<sup>8</sup> approximate measurement, options may alter spec

## Accessories:

Raised Edge	Cup Holder	Non-Locking Casters	Urinal Hook	Storage Basket	Vanity Drawer with Mirror
		GF9000-CST	GF9000-UH	GF9000-BSK	GF9000-VNTY
				10 x 6 x 9 inch 25.40 x 15.24 x 22.86 cm	



GF Health Products, Inc. is an  
 intertek ISO 13485:2016 / MDSAP Certified Company

Color variations may occur due to monitor or printer settings.

+1 770.368.4700

Information contained herein is subject to change without notice.  
 The most current and complete product information can be found on our website.

[www.grahamfield.com](http://www.grahamfield.com)



© 2019, GF Health Products, Inc. All Rights Reserved.  
 Lumex is a registered trademark of GF Health Products, Inc.

graham  
field

GF1900018RevC25