

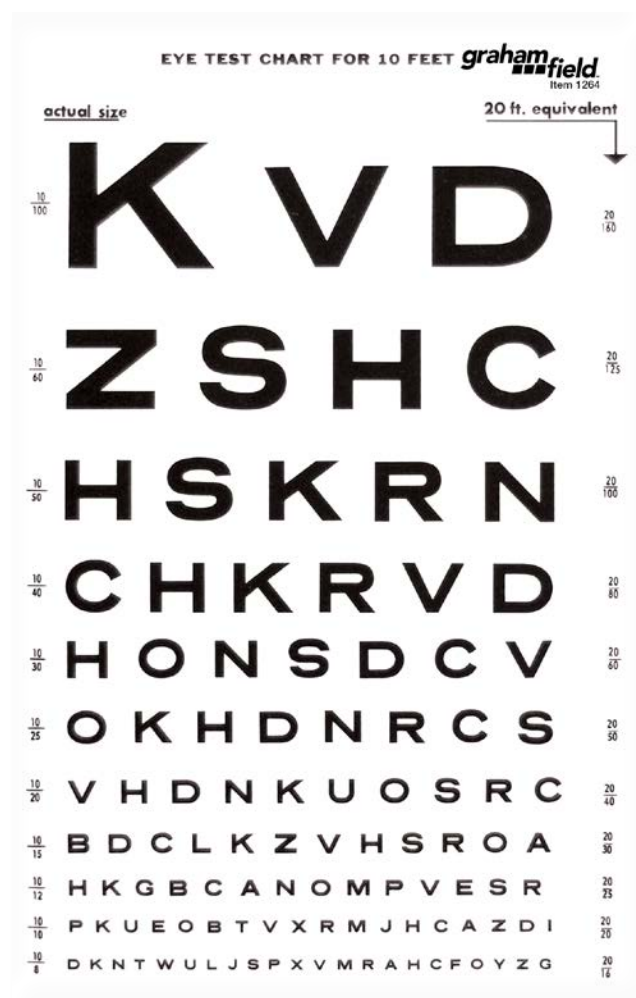
## EXAM ROOM SUPPLIES

# SNELLEN TYPE ILLUMINATED EYE CHART

### Features

- 10' distance (20' equivalent)
- Used for screening
- This is a chart for measuring visual acuity at a distance - in other words, how well you can see things that are far away
- Laminated chart
- Latex free

	overall Width		overall Height		test Distance		equivalent Distance		UOM
	inch	cm	inch	cm	ft	m	ft	m	
1264	9	22.9	14	35.6	10	3	20	6.1	1 ea



GF Health Products, Inc. is an  
intertek ISO 13485:2016 / MDSAP Certified Company

Color variations may occur due to monitor or printer settings.

+1 770.368.4700

Information contained herein is subject to change without notice.  
The most current and complete product information can be found on our website.

[www.grahamfield.com](http://www.grahamfield.com)



© 2005, GF Health Products, Inc. All Rights Reserved.  
Graham-Field is a trademark of GF Health Products, Inc.