

EXAM ROOM FURNISHINGS



INDUSTRY STANDARD COLORS

Esprit Industry Standard Collection



AL ALABASTER



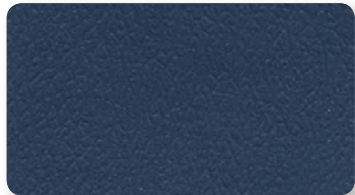
AQ AQUA GREEN



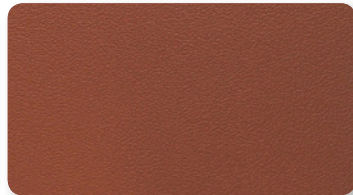
AR ARTICHOKE



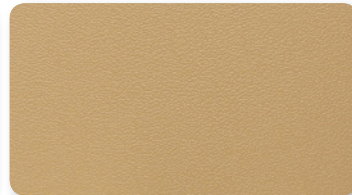
BL BLACK



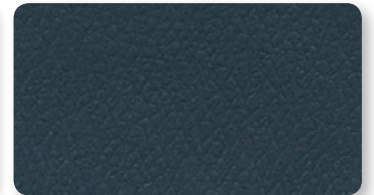
BU BLUE



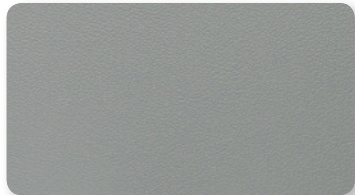
BT BRITISH TAN



DO DOE



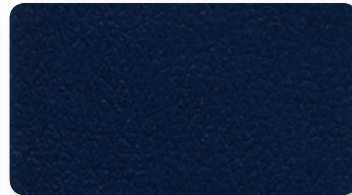
DB DUSTY BLUE



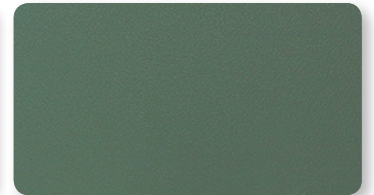
GR GRAY



MO MOSS



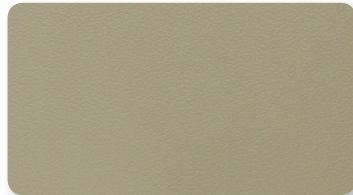
NA NAVY



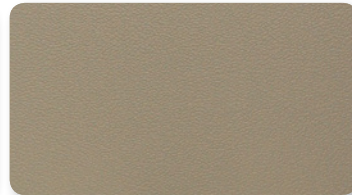
NO NORTHWOODS



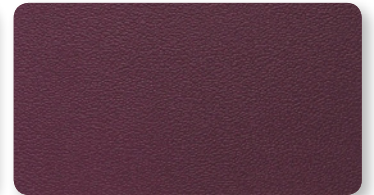
OG OCEAN GRAY



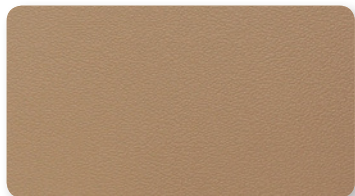
PM PALM



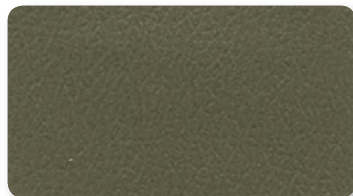
PL PEARL



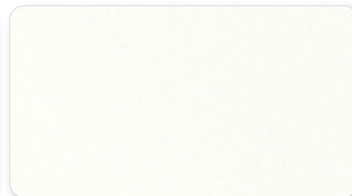
PU PLUM



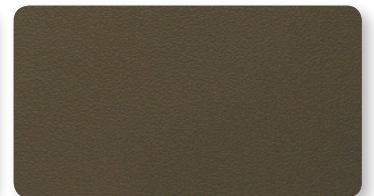
ST SADDLE TAN



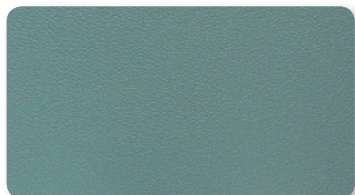
SH SHADOW



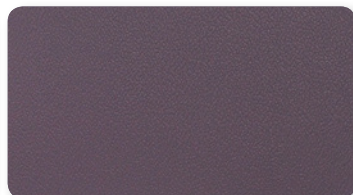
WH SUPER WHITE



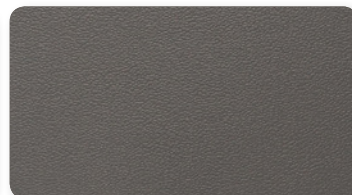
TL TEA LEAF



TE TEAL



VI VIOLET



WG WARM GRAY



WW WEDGEWOOD

Fabric Availability Current at time of publication and subject to change without notice. Contact Customer Service for most current availability +1 770.368.4700 | cs@grahamfield.com
Color Variations Swatches are digital reproductions. Perceived texture and coloring may vary on finished product. Monitor and printer settings will effect appearance of color.

Nassimi

EXAM ROOM FURNISHINGS
published August 2024

Composition & Backing		Esprit
PVC	■	
Polyester Backing (100%)	■	
Polyester/Cotton Backing (75%/25%)	—	
Polyester Bush Knit (100%)	—	
Thickness (mm)	0.97	
Weight (oz/liner yd)	30	
Roll Size (yd)	30	
Roll Width (inch)	54	
Flammability Codes*		ESP
NFPA 260 - Cover Fabric - Class 1	■	
UFAC Fabric - Class 1	■	
CAL TB 117-2013	■	
FMVSS 302	—	
Finishes & Performance		ESP
Abrasion Resistance (k) CFFA-1 ASTM D-4157-13	250	
Antibacterial Protection (hours)	—	
Bleach Resistance 10% Bleach Solution Cleanable	■	
Blue Wool AATCC TM 16-3 / NTC 1479 / CFFA-2a	1000	
Colorfast to UV (hours) ASTM G154-16	1000	
Crocking Resistance (wet/dry) AATCC 8-2007	Wet 5 Dry 5	
Flex Resistance (k) ASTM D2097-03	25+	
Mildew Resistance ASTM G21-13	■	
Stain Resistance	■	
Sulfide Stain Resistance	■	
Breaking Strength ASTM D751-06	Warp 95 Fill 73	
Tear Strength ASTM D751-06	Tongue Tear 11.9 Warp 15.4 Fill	
Seam Strength ASTM D751-06	Tack Tear 67 Warp 43 Fill	
Wyzenbeek Cotton Duck (k)	250	
Cold Crack (F) CFFA-6a-2007	-20°	
Applications		ESP
Recliners	■	
Physician & Laboratory Stools	■	
Exam Tables & Replacement Tops	■	
Phlebotomy Chairs	■	
Wall Saver Guest/Patient Seating	■	

EXAM ROOM FURNISHINGS

Care and Cleaning Guide



Regular Cleaning and Maintenance

Clean the soiled area with mild soap and water, then rinse with fresh water and wipe dry with a clean cloth.



Food Stains / Oils

Wipe affected area with a soft cloth or soft bristle brush using a non-abrasive cleaner, for example Formula 409 or Fantastik. Rinse with fresh water and wipe dry.



Difficult Stains

Clean the soiled area with 50% a solution of Isopropyl Alcohol and water. It is important to rinse the cleaned area with fresh water after applying the alcohol solution.



Healthcare / Disinfection

Clean the soiled area with a 10% solution of Household Bleach and water. It is important to rinse the cleaned area with fresh water after applying the bleach solution.

Example

Dirt
Dust
Grime

Ketchup
Chocolate
Coffee
Tea
Juice

Eyeshadow
/Mascara
Lipstick
Crayon
Grease
Mustard

Blood
Urine
Betadine

Disinfectants

In addition to cleaning, healthcare facilities maintain disinfecting regimens to reduce the spread of infections. There is a wide variety of available biocides that include bleaches, peroxides and quaternary ammonium products, among others. They should always be used at the recommended dilution, never in concentrated form. To prolong the life of coated fabrics, the disinfectants should be rinsed off after each use. It should be noted that misuse of disinfectants is the major source of surface deterioration.

About Color Transfer

Certain clothing and accessory dyes (such as those used on denim jeans) may migrate to lighter colors. This phenomenon is increased by humidity and temperature and is irreversible. Neither GF Health Products, Inc. nor Spradling Group® is responsible for any damages caused in this manner. Please check compatibility when using this product in combination with painted or varnished surfaces.

Color Variations

Swatches are digital reproductions. Perceived texture and coloring may vary on finished product. Monitor and printer settings will effect appearance of color.

Fabric Availability

Current at time of publication and subject to change without notice. Contact Customer Service for the most current availability. +1 770.368.4700 - cs@grahamfield.com

Note

This guide has recommendations for properly using and cleaning these products. Users are responsible for using and cleaning the coated fabrics safely with products that don't affect the surface, composition or, as a result, their performance and lifespan. The information in this cleaning guide refers to performance in specific tests conducted under laboratory conditions. Cleaning results may vary depending on the size of the stain, cleaning product used and time the surface is exposed. This information is not a guarantee and does not relieve the user from the responsibility of the proper and safe use of the product and referenced cleaning agents. Neither GF Health Products, Inc. nor Nassimi LLC have a relationship with the manufacturers of any cleaning products.

* This term and any corresponding data refer to the typical performance in the specific tests indicated and should not be construed to imply the behavior of this or any other material under actual fire conditions

NASSIMI

