



SUPPORT SURFACES



MEMORY FOAM MATTRESS

71 SERIES VISCOELASTIC MEMORY FOAM

Features

- Protection for higher risk patients with pressure ulcers and high-risk heels
- Specifically developed with long-term patient comfort and pressure injury management in mind
- Provides pressure reduction and redistribution.

Cover Features

- 4-way stretch polyurethane soft top cover. Durable Vinyl bottom
- Low shear fabric to reduce skin damage from friction.
- Infection control is aided by antimicrobial and anti-fungal properties
- Anti-static and flame retardant
- Fluid resistant
- Concealed full zipper
- Easy to clean and maintain

Mattress Construction

- High-density foam base provides support and comfort
- Viscoelastic Memory Foam top layer is designed to mold and contour the curves of the body to minimize pressure points.
- Firm side perimeter provides solid edge support and facilitates patient transfers
- Available in Firm or Soft comfort levels

Credentials

- Designed to meet the requirements of HCPCS Code E0184
- Meets 16CFR1633, Made in USA

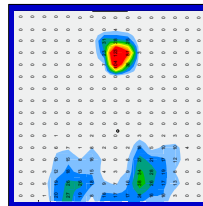
Warranty

- 60 month Mattress
- 12 month Cover

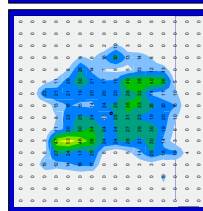
Product Info



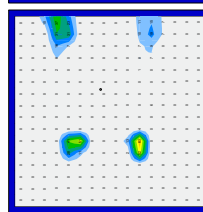
Minimum (mmHg) 0.00
Maximum (mmHg) 122.59
Average (mmHg) 4.95
Variance (mmHg²) 177.48
Standard deviation (mmHg) 13.32
Coefficient of variation (%) 269.34
Horizontal center (in) 6.29



Minimum (mmHg) 0.00
Maximum (mmHg) 52.50
Average (mmHg) 8.97
Variance (mmHg²) 134.69
Standard deviation (mmHg) 11.61
Coefficient of variation (%) 143.82
Horizontal center (in) 8.33

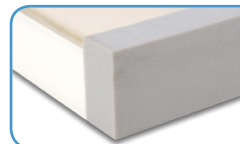


Minimum (mmHg) 0.00
Maximum (mmHg) 62.55
Average (mmHg) 2.11
Variance (mmHg²) 63.40
Standard deviation (mmHg) 7.96
Coefficient of variation (%) 377.78
Horizontal center (in) 10.48



SOFT HEEL ZONE
for patients with sensitive heels

DEFINED PERIMETER
aids in fall prevention during ingress / egress



Shipped compress rolled for cost effective freight

Largest Box Size:²
14 x 14 x 46 inches



Specifications

Item No.	Overall ⁴ Width		Overall ⁴ Length		Overall Thickness		Product ⁸ Weight		Weight ¹ Capacity EVENLY DISTRIBUTED		Comfort Level	Viscoelastic Memory Foam Topper	Raised Side Bolsters	Defined Perimeter	Soft Heal Zone	Soft Heal Slope	Pressure Reduction	Zippered Cover
	inch	cm ¹	inch	cm ¹	inch	cm ¹	lb	kg ¹	lb	kg ¹								
71980-1633F	36	91.44					24	10.89			firm	■	—	■	■	—	■	■
71980-1633S			80	203.20	7	17.78	24	10.89	400	181.44	soft	■	—	■	■	—	■	■
7198042-1633F	42	106.68					35	15.88			firm	■	—	■	■	—	■	■
7198042-1633S							35	15.88			soft	■	—	■	■	—	■	■

⁴ foam tolerance ±1 inch ¹ standard rounding method used ¹ maximum weight capacity - evenly distributed - refer to user manual
² box length depends on mattress width: 40" box for 36" mattress and 46" for 42". ⁸ approximate measurement



GF Health Products, Inc. is an
intertek ISO 13485:2016 / MDSAP Certified Company

Color variations may occur due to monitor or printer settings.

+1 770.368.4700

Information contained herein is subject to change without notice.
The most current and complete product information can be found on our website.
www.grahamfield.com



© 2008, GF Health Products, Inc. All Rights Reserved.
Lumex is a registered trademark of GF Health Products, Inc.