



SUPPORT SURFACES



GOLD CARE FOAM MATTRESS

41 SERIES HIGH-DENSITY FOAM MATTRESS

Features

- Protection for higher risk patients with pressure ulcers and high-risk heels provides support to the patient for pressure redistribution
- Specifically developed with patient comfort and pressure injury management in mind
- Provides pressure reduction and redistribution

Cover Features

- Ultra soft nylon cover. Durable Vinyl bottom
- Vapour permeable (0% vapor transmission)
- Fluid resistant
- Infection control is aided by antimicrobial properties; bacteria resistant, anti-fungal, and non-allergenic
- Anti-static and flame retardant
- Concealed full zipper (419 Series only)
- Easy to clean and maintain

Mattress Construction

- Four separate anatomically matched support zones enhance patient comfort, reduce tissue interface pressures, and provide pressure redistribution
- Die-cut design on foam top provides comfort and allows air to flow and cool the sleep surface
- Firm side perimeter provides solid edge support and facilitates patient transfers

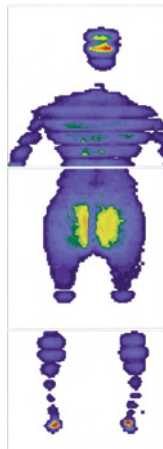
Credentials

- Designed to meet the requirements of HCPCS Code E0184
- Meets 16CFR1633, Made in USA

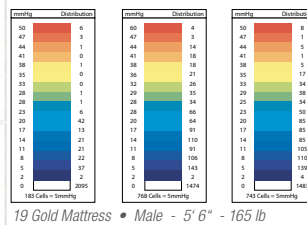
Warranty

- 60 month Mattress
- 12 month Cover

Product Info



Position	average Pressure mmHg
Scapula	14
Sacral	20
Heel	23
Trochanter	37



SOFT HEEL ZONE
for patients with sensitive heels

DEFINED PERIMETER
aids in fall prevention during ingress / egress

Shipped compress rolled for cost effective freight

Largest Box Size:²
14 x 14 x 46 inches



Specifications

Item No.	Overall ¹ Width		Overall ¹ Length		Overall Thickness		Product ³ Weight		Weight Capacity EVENLY DISTRIBUTED		Support Zones	Raised Side Bolsters	Defined Perimeter	Soft Heel Zone	Soft Heel Slope	Pressure Reduction	Zippered Cover
	inch	cm ¹	inch	cm ¹	inch	cm ¹	lb	kg ¹	lb	kg ¹							
41680-1633			80	203.20			19	8.62			4	—	■	■	—	■	—
41980-1633	36	91.44	80	203.20			19	8.62			4	■	■	■	—	■	■
41984-1633			84	213.36			20	9.07			4	■	■	■	—	■	■
4168042-1633			80	203.20	6	15.24	21	9.53	400	181.44	4	—	■	■	—	■	—
4198042-1633	42	106.68	80	203.20			21	9.53			4	■	■	■	—	■	■
4198442-1633			84	213.36			22	9.98			4	■	■	■	—	■	■

■ Standard

■ Optional

¹ foam tolerance ±1 inch

² standard rounding method used

³ maximum weight capacity - evenly distributed - refer to user manual

⁴ box length depends on mattress width: 40" box for 36" mattress and 46" for 42". ⁵ approximate measurement



GF Health Products, Inc. is an
intertek ISO 13485:2016 / MDSAP Certified Company

Color variations may occur due to monitor or printer settings.

+1 770.368.4700

Information contained herein is subject to change without notice.
The most current and complete product information can be found on our website.
www.grahamfield.com



© 2007, GF Health Products, Inc. All Rights Reserved.
Lumex is a registered trademark of GF Health Products, Inc.

graham
field