



SUPPORT SURFACES

FOAM MATTRESS

C600 SERIES TRI-LAMINATE FOAM MATTRESS

Features

- Protection for higher risk patients with pressure ulcers and high-risk heels
- Specifically developed with patient comfort and pressure injury management in mind
- Provides support to the patient for pressure reduction and redistribution

Cover Features

- Stretch polyurethane soft top cover. Durable Vinyl bottom
- Vapour permeable (0% vapor transmission)
- Low shear fabric to reduce skin damage from friction
- Infection control is aided by antimicrobial properties; bacteria resistant, anti-fungal, and non-allergenic
- Anti-static and flame retardant
- Fluid resistant
- Concealed full zipper
- Easy to clean and maintain

Tri-Laminate Mattress Construction

- High-density foam supportive base
- Secondary layer provides support and comfort
- Top layer is designed with die-cut foam to provide comfort and allows air to flow and cool the sleep surface
- Tapered heel section provides added pressure reduction for sensitive heel and ankles
- Firm side perimeter construction with optional 3 inch (7.62 cm) raised perimeter bolsters (RB) featuring ingress-egress cutout

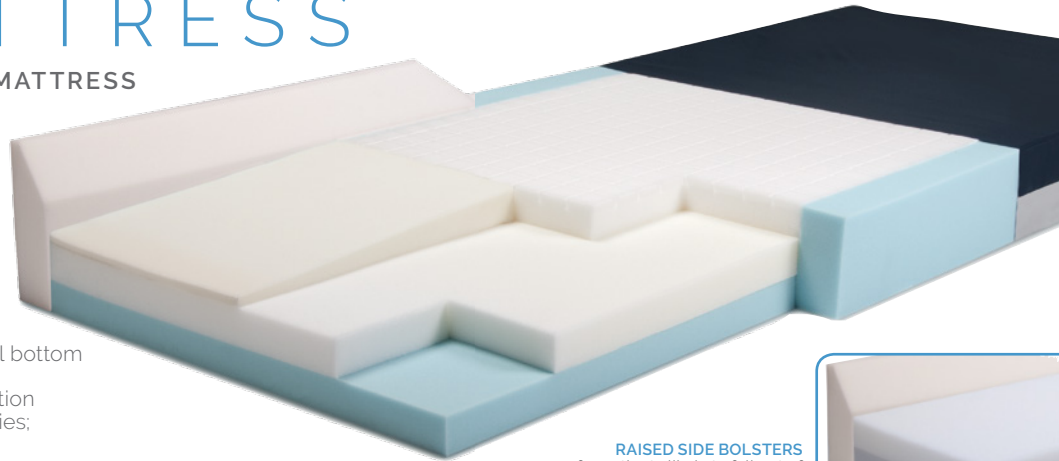
Credentials

- Designed to meet the requirements of HCPCS Code E0184
- Meets 16CFR1633, Made in USA

Warranty

- 60 month Mattress
- 12 month Cover

Product Info



RAISED SIDE BOLSTERS
for patients likely to fall out of or exit the bed unattended



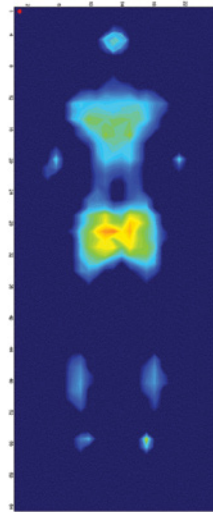
SOFT HEEL ZONE
for patients with sensitive heels



DEFINED PERIMETER
aids in fall prevention during ingress/egress



HEEL SLOPE
added pressure reduction for sensitive heel and ankles



Pressure Interface Pressure Mapping

Shipped compress rolled for cost effective freight

Largest Box Size:²
14 x 14 x 46 inches



Specifications

Item No.	Overall ¹ Width		Overall ¹ Length		Overall Thickness		Product ⁸ Weight		Weight ¹ Capacity EVENLY DISTRIBUTED		Die-Cut Top Layer	Raised Side Bolsters	Defined Perimeter	Soft Heel Zone	Soft Heel Slope	Pressure Reduction	Zippered Cover
	inch	cm ¹	inch	cm ¹	inch	cm ¹	lb	kg ¹	lb	kg ¹							
C600B-3580	36	91.44	80	203.20	6	15.24	29	13.15	450	204.12	■	—	■	■	■	■	■
C600RB-3580			84	213.36			30	13.61			■	■	■	■	■	■	
C600B-3584			84	213.36			32	14.52			■	■	■	■	■	■	
C600RB-3584			84	213.36			33	14.97			■	■	■	■	■	■	
C600B-4280	42	106.68	80	203.20	7	17.78	40	18.14	500	226.80	■	—	■	■	■	■	■
C600RB-4280			84	213.36			41	18.60			■	■	■	■	■	■	
C600B-4284			84	213.36			43	19.50			■	■	■	■	■	■	
C600RB-4284			84	213.36			44	19.96			■	■	■	■	■	■	

¹ foam tolerance ±1 inch ² standard rounding method used ³ maximum weight capacity - evenly distributed - refer to user manual ⁴ box length depends on mattress width: 40" box for 36" mattress and 46" for 42". ⁸ approximate measurement



GF Health Products, Inc. is an
intertek ISO 13485:2016 / MDSAP Certified Company

Color variations may occur due to monitor or printer settings.

+1 770.368.4700

Information contained herein is subject to change without notice.
The most current and complete product information can be found on our website.
www.grahamfield.com



© 2013, GF Health Products, Inc. All Rights Reserved.
Lumex is a registered trademark of GF Health Products, Inc.