



SUPPORT SURFACES

SELECT FOAM MATTRESS

LS SERIES HIGH DENSITY FOAM MATTRESS

Features

- Provides pressure redistribution

Cover Features

LS100SERIES

- Durable soft Nylon top / Vinyl bottom
- Fluid resistant, Flame retardant, and anti-bacterial

LS150SERIES

- Durable Stretch polyurethane top/ Vinyl bottom
- Fluid resistant, flame retardant, and anti-static
- Vapour permeable (0% vapor transmission)
- Bacteria resistant, anti-fungal, and non-allergenic

Mattress Construction

LS100SERIES

- High Density Foam Mattress
- Convoluted Topper for Excellent Airflow

LS150SERIES

- High Density Foam Mattress
- Firm Side Rails and Soft Heel Section
- Long Term Care Replacement Mattress

Credentials

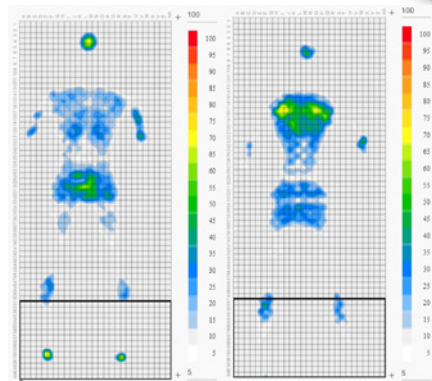
- Designed to meet the requirements of HCPCS Code E0184
- Meets 16CFR1633, Made in USA

Warranty

- 60 month Mattress
- 12 month Cover

Product Info

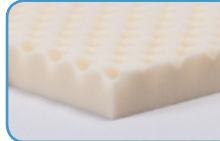
Position	average Pressure mmHg
Scapula	29
Sacral	21
Heel	24



LS100 Mattress
Male - 5' 7" - 200 lb

LS150 Mattress
Male - 5' 8" - 150 lb

CONVOLUTED TOPPER
creates excellent airflow



SOFT HEEL ZONE
for patients with sensitive feet



FIRM SIDE PERIMETER
aids in fall prevention during ingress / egress



Shipped compress rolled for cost effective freight

Largest Box Size:²
14 x 14 x 46 inches



Specifications

Item No.	Overall ⁴ Width		Overall ⁴ Length		Overall Thickness		Product ⁸ Weight		Weight ¹ Capacity EVENLY DISTRIBUTED		Durable Nylon/Vinyl Stretch Urethane/Vinyl cover	Convoluted Topper	Raised Side Bolsters	Defined Perimeter	Soft Heel Zone	Soft Heel Slope	Pressure Redistribution	Zippered Cover
	inch	cm ¹	inch	cm ¹	inch	cm ¹	lb	kg ¹	lb	kg ¹								
LS100-35	36	91.44	80	203.20	6	15.24	22	9.98	350	158.76	■	■	■	■	■	■	■	■
LS100-42	42	106.68			6	15.24	23	10.43			■	■	■	■	■	■	■	■
LS150-35	36	91.44	80	203.20	6	15.24	22	9.98	400	181.44	■	■	■	■	■	■	■	■
LS150-42	42	106.68			6	15.24	23	10.43			■	■	■	■	■	■	■	■

¹ foam tolerance ±1 inch ² standard rounding method used ³ maximum weight capacity - evenly distributed - refer to user manual ⁴ box length depends on mattress width: 40" box for 36" mattress and 46" for 42". ⁸ approximate measurement



GF Health Products, Inc. is an
intertek ISO 13485:2016 / MDSAP Certified Company

Color variations may occur due to monitor or printer settings.

+1 770.368.4700

Information contained herein is subject to change without notice.
The most current and complete product information can be found on our website.

www.grahamfield.com



© 2021, GF Health Products, Inc. All Rights Reserved.
Lumex is a registered trademark of GF Health Products, Inc.

graham
field

GF-1800-095Rev.D24