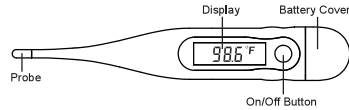


FEATURES

The Graham-Field L2013 Digital Thermometer accurately measures temperature. The compact, lightweight device is durable, water-resistant, and features an easy-to-read display — ideal for use by the whole family.

PARTS DESCRIPTION

SAFETY AND MAINTENANCE

- ⚠️ **WARNING:** Children must always be supervised by an adult during temperature measurement.
- ⚠️ **WARNING:** Stop using the thermometer if it operates erratically or if the display malfunctions.
- ⚠️ **WARNING:** Clean the thermometer probe before storing.
- ▲ **NOTICE:** Do not boil thermometer or clean it in the dishwasher. See following **CLEANING INSTRUCTIONS**.
- ▲ **NOTICE:** Do not drop the thermometer or expose it to heavy shock. The unit is not shock proof.
- ▲ **NOTICE:** Do not bend or bite the probe.
- ▲ **NOTICE:** Do not attempt to disassemble the unit except to replace the battery.
- ▲ **NOTICE:** If the thermometer has been stored at below-freezing temperatures, allow it to warm naturally to room temperature before using.
- ▲ **NOTICE:** Do not store the unit under direct sunlight, at a high temperature, or in high humidity or dust; performance may be degraded.

HOW TO USE

To ensure accurate temperature measurement, avoid eating, drinking any liquid, exercising, bathing, or smoking for fifteen minutes before taking a measurement.

1. Disinfect the thermometer probe with isopropyl alcohol. Place a probe cover over the tip of the thermometer. Press the On/Off button. “**98.6°F**” will display, followed by last recorded temperature. If “**Err**” appears instead, the thermometer has malfunctioned and must be repaired or replaced.
2. “**Lo**” and blinking “**°F**” will display; the device is now ready for measurement. Place the probe in the desired measurement location as described below (oral, underarm, or rectal).
Oral Use: Place the probe tip well under the tongue. The mouth must remain closed during measurement to ensure accurate temperature measurement. DO NOT bend or bite the probe while it is in the mouth. A normal temperature by this method is 98.6°F.
Underarm Use (Axillary): Wipe the armpit with a dry towel. Place the probe tip under the armpit and keep the arm firmly pressed against the body during measurement to ensure accurate temperature measurement. A normal temperature by this method is 97.6°F.
Rectal Use: If your doctor recommends rectal temperature measurement, place a probe cover over the tip of the thermometer and lubricate the probe cover with a water-soluble jelly for easier insertion. DO NOT use petroleum jelly. Gently insert the tip of the probe NO MORE than 1/2 inch into the rectum. STOP if you meet any resistance. Hold the thermometer in place during measurement to ensure accurate temperature measurement. A normal temperature by this method is 99.6°F.
3. Once “**°F**” has stopped blinking, the peak temperature has been reached and a beeper will sound for approximately four seconds to signify that measurement is complete.
4. After noting the measurement, turn the thermometer off, dispose of the used probe cover, and clean the thermometer as instructed in the following section, **CLEANING INSTRUCTIONS**. If the thermometer is accidentally left on, it will shut off automatically after ten minutes.
5. After use, store the thermometer in a safe place, out of the reach of children.

*Note: If the measured temperature is higher or lower than the thermometer’s measuring range, “**Hi**” or “**Lo**” will display.*

Note: Using a probe cover may result in a 0.2°F difference from actual temperature.

REMEMBER: Temperature measurements vary from person to person and thermometer to thermometer. Find your normal temperature and watch for changes. If you compare measurements between two thermometers, it is possible to have two different measurements even if both thermometers are within their accuracy ranges.

LAST TEMPERATURE RECALL (MEMORY)

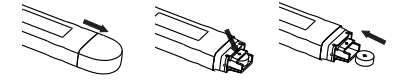
While the thermometer is off, press and hold the On/Off button for approximately two seconds. The last measured temperature will display. “**M**” will also display under the degree (°) symbol.

CLEANING INSTRUCTIONS

To clean the thermometer, wipe it with a clean, soft cloth dampened with a mild soap and water solution, then wipe it with a clean, soft cloth dampened with clean water. To disinfect the thermometer, wipe it with a clean, soft cloth dampened with isopropyl alcohol.

BATTERY REPLACEMENT

1. When “**Lo**” displays, the battery needs to be replaced.
2. Slide the battery cover off in the direction shown at right. Use a toothpick or insulated probe to remove the battery. DO NOT use any sharp metal object to remove the battery.
3. Place a new 1.5V battery in the chamber. Insert the battery with the positive (+) side up and the negative (-) side down (facing the display).
4. Slide the battery cover back onto the thermometer and make sure it is securely closed.



⚠️ **WARNING:** Dispose of the old battery properly, out of the reach of children and in compliance with local regulations. Swallowing the battery may be fatal. If the battery is swallowed, contact hospital immediately to have it removed. DO NOT dispose of the battery in a fire; it may explode.

SPECIFICATIONS

Measuring Range.....	90°F ~ 109.9°F
Accuracy.....	± 0.2°F (95.9°F ~ 107.6°F); ± 0.4°F (< 95.9°F or > 107.6°F)
Power Supply.....	One Button Battery: 1.5V LR41, AG3 or equivalent
Weight / Dimensions.....	~ 12 g / 12.2 cm x 1.9 cm x 1 cm
Ambient Operating Temperature.....	60.8°F ~ 104°F
Alarm.....	Safe-Test Alarm / Last-Recall Memory / Beeper

LIMITED WARRANTY
SCOPE OF WARRANTY

GF Health Products, Inc. (“GF”) warrants to the original purchaser only that it will replace or repair components, at GF’s sole discretion, that are defective in material or workmanship under normal use and service. All warranties are conditioned upon the proper use of the products strictly in accordance with good commercial practice and applicable GF instructions and manuals, including proper use and maintenance. To the extent that a third party warrants a component, GF conveys all of its rights under that warranty to the original purchaser, to the extent permitted. This limited warranty shall only apply to defects that are reported in accordance with the provisions set forth in this warranty document, within the applicable warranty period and which, upon examination by GF or its authorized representative, prove to be a warranty item. (See Obtaining Warranty Service below) This limited warranty is not transferable.

The warranted components and time periods are set forth: Thermometer.....one (1) year
 Labor is not included in the warranty.

The warranty period is as designated above. If a part is replaced under warranty, the original warranty period will not be affected. All other replacement parts will be subject to the warranty period specified. The applicable warranty period shall commence from date of shipment to the original customer, unless there is an expiration date on the component in which case the warranty shall expire on the earlier of warranty period or the expiration date.

OBTAINING WARRANTY SERVICE

Customers located in the United States who wish to report a warranty issue, must contact GF directly by calling 1.770.368.4700 or by e-mailing a request to cs@grahamfield.com. Customers located outside the United States must contact the Distributor from whom they purchased the products. In both cases, further directions will be provided once the initial contact is made. This limited warranty shall only apply to defects that are reported within the applicable warranty period. Failure to abide by the specific directions will result in denial of the warranty claim.

The warranty does not cover and GF shall not be liable for the following:

- 1) Defects, damage, or other conditions caused, in whole or in part, by misuse, abuse, negligence, alteration, accident, freight damage, tampering or failure to seek and obtain repair or replacement in a timely manner;
- 2) Products which are not installed, used, or properly cleaned and maintained as required in the official manual for the applicable product;
- 3) Products considered to be of a non-durable nature including, but not limited to: filters, fuses, gaskets, lubricants, and charts;
- 4) Accessories or parts not provided by GF;
- 5) Matching of color, grain or texture except to commercially acceptable standards;
- 6) Changes in color caused by natural or artificial light;
- 7) Charges by anyone for adjustments, repairs, replacement parts, installation or other work performed upon or in connection with such products which are not expressly authorized in writing, in advance, by GF;
- 8) Any labor or shipping charges incurred in the replacement part installation or repair;
- 9) Costs and expenses of regular maintenance and cleaning; and
- 10) Representations and warranties made by any person or entity other than GF.

ENTIRE WARRANTY, EXCLUSIVE REMEDY AND CONSEQUENTIAL DAMAGES DISCLAIMER

THIS WARRANTY IS GF’S ONLY WARRANTY AND IS IN LIEU OF ALL OTHER WARRANTIES, EXPRESS OR IMPLIED. GF MAKES NO IMPLIED WARRANTIES OF ANY KIND INCLUDING ANY IMPLIED WARRANTIES OF MERCHANTABILITY OR FITNESS FOR A PARTICULAR PURPOSE. IF ANY MODEL OR SAMPLE WAS SHOWN TO THE CUSTOMER, SUCH MODEL OR SAMPLE WAS USED MERELY TO ILLUSTRATE THE GENERAL TYPE AND QUALITY OF THE PRODUCT AND NOT TO REPRESENT THAT THE PRODUCT WOULD NECESSARILY CONFORM TO THE MODEL OR SAMPLE IN ALL RESPECTS. THIS WARRANTY IS LIMITED TO THE REPAIR OR REPLACEMENT OF THE DEFECTIVE PARTS. GF SHALL NOT BE LIABLE FOR AND HEREBY DISCLAIMS ANY DIRECT, SPECIAL, INDIRECT, INCIDENTAL, EXEMPLARY OR CONSEQUENTIAL DAMAGES, INCLUDING, BUT NOT LIMITED TO: DAMAGES FOR LOSS OF PROFITS OR INCOME, LOSS OF USE, DOWNTIME, COVER, OR EMPLOYEE OR INDEPENDENT CONTRACTOR WAGES, PAYMENTS AND BENEFITS. CERTAIN STATES MAY CONFER ADDITIONAL RIGHTS REGARDING WARRANTIES AND IN THOSE STATES GF’S LIABILITY AND THE LIABILITY OF GF’S SUPPLIERS, SHALL BE LIMITED TO THE FULLEST EXTENT PERMITTED BY LAW.

The warranties contained herein, together with GF’s current Terms and Conditions, contain all the representations and warranties with respect to the subject matter of this document, and supersede all prior negotiations, agreements and understandings with respect thereto. The recipient of this document hereby acknowledges and represents that it has not relied on any representation, assertion, guarantee, warranty, collateral contract or other assurance, except those set out in this document.

NOTES:

- 1) Additional terms and conditions may apply. See GF’s General Terms and Conditions on its website: www.grahamfield.com.
- 2) Freight claims must be notified on the appropriate shipping documents and must be made with immediacy. International, federal and state regulations govern specific requirements for freight claims. Failure to abide by those regulations may result in a denial of the freight claim. GF will assist you in filing the freight claim.
- 3) Claims for any short shipment must be made within three (3) days of the invoice date.

