



2990: DISPOSABLE BLADE REMOVER OPERATION INSTRUCTIONS

SAVE THESE INSTRUCTIONS FOR FUTURE USE

- ⚠ WARNING:** Important! Read and understand these instructions before using the Feather 2990 Disposable Blade Remover. If you do not understand any part of these instructions, contact your medical supply distributor for direction in the use of this product. If the Disposable Blade Remover is not properly operated, personal injury and/or damage to the device could result.
- ⚠ WARNING:** If components are damaged or missing, contact your dealer immediately. **DO NOT** use substitute parts.
- ⚠ WARNING:** GF Health Products, Inc. assumes no responsibility for any damage or injury caused by improper assembly or use of this product.

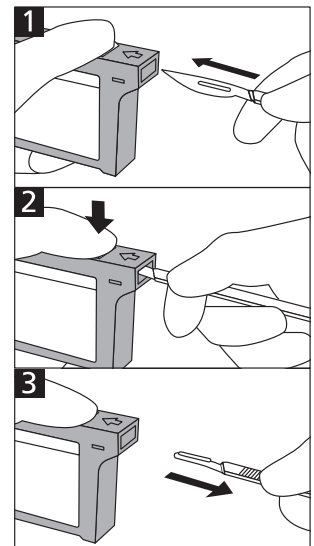
DISPOSABLE BLADE REMOVER OPERATION

- ⚠ WARNING:** The Disposable Blade Remover is designed to eliminate direct contact with surgical blades. Avoid contact with surgical blades at all times.

The Disposable Blade Remover enables safe and easy removal of used disposable blades from any size or type of scalpel handle. It can accept between 150 and 300 used surgical blades, depending on blade size. To remove surgical blades:

Position the Blade Remover upright with its insertion opening upward. Never hold blade at an angle.

1. Orient the blade up and insert the handle into the remover until it stops.
2. Keep pushing the button of the remover until the blade is removed.
3. Pull the handle horizontally to remove the blade.



DISPOSABLE BLADE REMOVER DISPOSAL

Dispose of the Disposable Blade Remover in accordance with federal and local laws and regulations.

