



# 2990: DISPOSABLE BLADE REMOVER OPERATION INSTRUCTIONS

## SAVE THESE INSTRUCTIONS FOR FUTURE USE

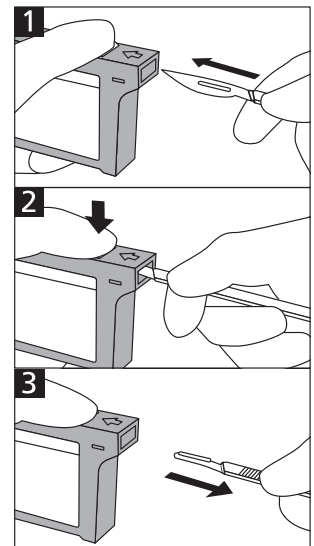
- ⚠ WARNING:** Important! Read and understand these instructions before using the Feather 2990 Disposable Blade Remover. If you do not understand any part of these instructions, contact your medical supply distributor for direction in the use of this product. If the Disposable Blade Remover is not properly operated, personal injury and/or damage to the device could result.
- ⚠ WARNING:** If components are damaged or missing, contact your dealer immediately. **DO NOT** use substitute parts.
- ⚠ WARNING:** GF Health Products, Inc. assumes no responsibility for any damage or injury caused by improper assembly or use of this product.

### DISPOSABLE BLADE REMOVER OPERATION

- ⚠ WARNING:** The Disposable Blade Remover is designed to eliminate direct contact with surgical blades. Avoid contact with surgical blades at all times.

The Disposable Blade Remover enables safe and easy removal of used disposable blades from any size or type of scalpel handle. It can accept between 150 and 300 used surgical blades, depending on blade size. To remove surgical blades:

1. While lightly pushing the button on top of the Disposable Blade Remover, perform step 2.
2. Hold the surgical blade with right side facing upward as shown at right. Insert the blade into the blade remover slot as far as it will go.
3. Pull the handle out; the detached blade will drop inside the blade remover.



### DISPOSABLE BLADE REMOVER DISPOSAL

Dispose of the Disposable Blade Remover in accordance with federal and local laws and regulations.

