



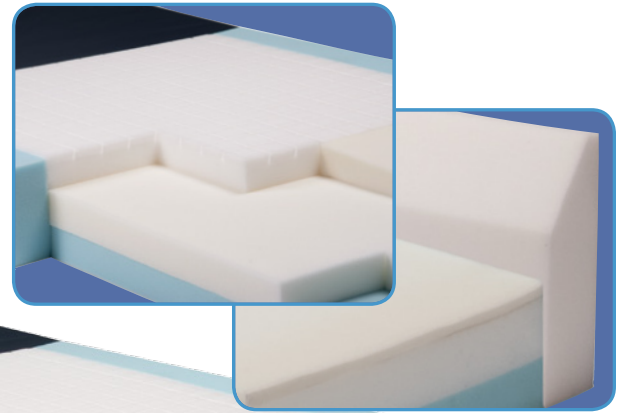
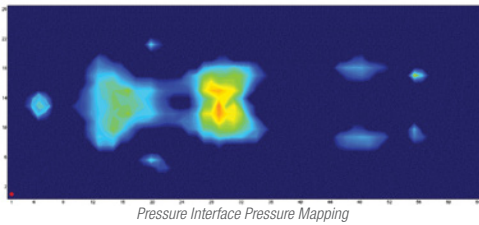
SUPPORT SURFACES



FOAM MATTRESS

C600 SERIES

The Lumex C600 Series Foam Mattress provides support to the patient for pressure redistribution. The Lumex mattresses are specifically developed with patient comfort and pressure injury management in mind. Provides pressure reduction and redistribution



Features

- Protection for higher risk patients with pressure ulcers and high-risk heels

Cover features

- Fluid resistant
- Concealed full zipper
- Vapour permeable (0% vapor transmission)
- Infection Control is aided by Antimicrobial properties; Bacteria resistant, anti-fungal, and non-allergenic
- Anti-static and flame retardant
- Easy to clean and maintain

Tri-Laminate Mattress Construction

- High-density foam supportive base
- Secondary layer provides support and comfort
- Comfortable Top layer for pressure redistribution
- Tapered heel section provides added pressure reduction for sensitive heel and ankles
- Firm side perimeter construction with optional 3" raised perimeter bolsters (RB) featuring ingress-egress cutout

- Designed to meet the requirements of HCPCS Code E0184

Specifications

Item	UOM	Meets HCPCS	Overall Width		Overall Length		Overall Thickness		Product Weight		Weight Capacity		Raised Side Bolsters 3" height / 0.6 cm	Defined Perimeter	Soft Heel Zone	Soft Heel Slope	Pressure Reduction	Zippered Cover	Meets 16CFR1633	Made in USA	Mattress in months	Cover in months	
			inch	cm	inch	cm	inch	cm	lb	kg	lb	kg											
C600B-3580	1/ea	E0184	35	88.90	80	203.20	6	15.24	23.75	10.77	450	204.12	—	■	■	■	■	■	■	■	■	60	12
C600RB-3580	1/ea	E0184	35	88.90	80	203.20	6	15.24	25.00	11.34	450	204.12	■	■	■	■	■	■	■	■	■	60	12
C600B-3584	1/ea	E0184	35	88.90	84	213.36	6	15.24	25.00	11.34	450	204.12	—	■	■	■	■	■	■	■	■	60	12
C600RB-3584	1/ea	E0184	35	106.68	84	213.36	6	15.24	26.50	12.02	450	204.12	■	■	■	■	■	■	■	■	■	60	12
C600B-4280	1/ea	E0184	42	106.68	80	203.20	7	17.78	32.50	14.74	500	226.80	—	■	■	■	■	■	■	■	■	60	12
C600RB-4280	1/ea	E0184	42	106.68	80	203.20	7	17.78	33.75	15.31	500	226.80	■	■	■	■	■	■	■	■	■	60	12
C600B-4284	1/ea	E0184	42	106.68	84	213.36	7	17.78	34.00	15.42	500	226.80	—	■	■	■	■	■	■	■	■	60	12
C600RB-4284	1/ea	E0184	42	106.68	84	213.36	7	17.78	35.50	16.10	500	226.80	■	■	■	■	■	■	■	■	■	60	12

■ Standard ■ Optional ■ Available ■ Not Available ■ Accessory — Does Not Apply ■ Active Hyperlink
 † approximate - as size changes so does weight to a minor degree



GF Health Products, Inc. is an
 intertek ISO 13485:2016 / MDSAP Certified Company

Product Hyperlinks Enabled
 +1 770.368.4700

Information contained herein is subject to change without notice.
 The most current and complete product information can be found on our website.

www.grahamfield.com



© 2013, GF Health Products, Inc. All Rights Reserved.
 Lumex is a registered trademark of GF Health Products, Inc.



GF-1300096RevC23