



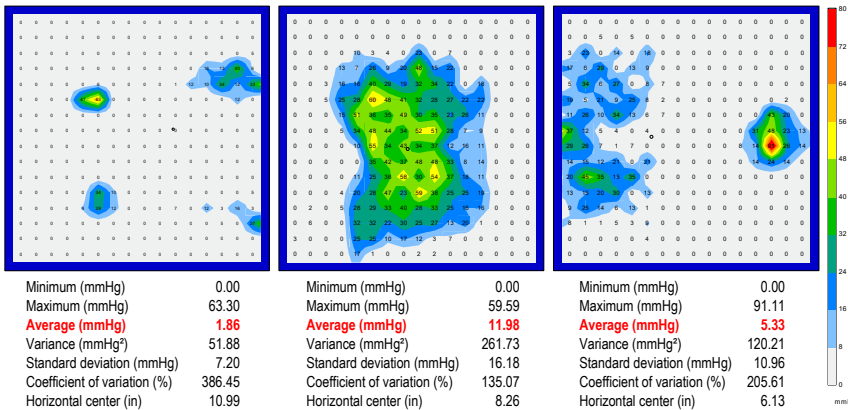
SUPPORT SURFACES

LIGHTEST FOAM/GEL OVERLAY

The Lumex Lightest Foam/Gel Overlays are a new standard in pressure management to reduce body interface pressure and provide a comfort for a wide range of body shapes and sizes.

Cover Features

- Vapour permeable (0% vapor transmission)
- Fluid resistant
- Infection control is aided by antimicrobial properties; bacteria resistant, anti-fungal, and non-allergenic
- Anti-static and flame retardant
- Easy to remove cover with zipper
- Easy to clean and maintain



Overlay Features

- Lightweight for easy handling
- 2" (5.1 cm) high density foam base
- Non-migrating gel is inherently viscoelastic and is engineered into the foam base to provide pressure management.
- 1" (2.5 cm) convoluted top layer foam provides maximum comfort
- Gel is non-aqueous and will not migrate, pool, or leak



Item	UOM	Overall Width		Overall Length		Overall Thickness		Shipping Weight		Weight Capacity EVENLY DISTRIBUTED		Made in USA
		inch	cm	inch	cm	inch	cm	lb	kg	lb	kg	
103680	1/ea	36	91.4	80	203.2	3	7.6	26	11.8	300	136.1	■
103684	1/ea	36	91.4	84	213.4	3	7.6	26	11.8	300	136.1	■
104280	1/ea	42	106.7	80	203.2	4	10.2	34	15.4	400	181.4	■



GF Health Products, Inc. is an
intertek ISO 13485:2016 / MDSAP Certified Company

Color variations may occur due to monitor or printer settings.

+1 770.368.4700

Information contained herein is subject to change without notice.
The most current and complete product information can be found on our website.

www.grahamfield.com



© 2007, GF Health Products, Inc. All Rights Reserved.
Lumex is a registered trademark of GF Health Products, Inc.