



SUPPORT SURFACES



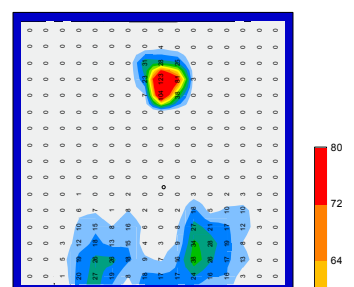
MEMORY FOAM MATTRESS

719 SERIES VISCO MEMORY FOAM

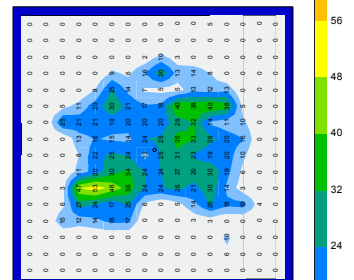
The Lumex 719 Series Foam Mattress provides support to the patient for pressure redistribution. The Lumex mattresses are specifically developed with long-term patient comfort and pressure injury management in mind.



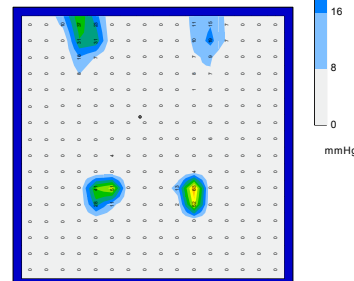
Minimum (mmHg) 0.00
 Maximum (mmHg) 122.59
Average (mmHg) 4.95
 Variance (mmHg²) 177.48
 Standard deviation (mmHg) 13.32
 Coefficient of variation (%) 269.34
 Horizontal center (in) 6.29



Minimum (mmHg) 0.00
 Maximum (mmHg) 52.50
Average (mmHg) 8.07
 Variance (mmHg²) 134.69
 Standard deviation (mmHg) 11.61
 Coefficient of variation (%) 143.82
 Horizontal center (in) 8.33



Minimum (mmHg) 0.00
 Maximum (mmHg) 62.55
Average (mmHg) 2.11
 Variance (mmHg²) 63.40
 Standard deviation (mmHg) 7.96
 Coefficient of variation (%) 377.78
 Horizontal center (in) 10.48



Features

- Protection for higher risk patients with pressure ulcers and high-risk heels

Cover features

- 4-way stretch polyurethane coated soft top cover
- Fluid resistant
- Infection Control is aided by Antimicrobial properties
- Anti-static and flame retardant
- Concealed full zipper
- Easy to clean and maintain

Dual Layer Mattress Construction

- High-density foam base provides support and comfort
- Visco Foam top layer is designed to mold and contour the curves of the body to minimize pressure points.
- Firm side perimeter provides solid edge support and facilitates patient transfers
- Available in Firm or Soft Comfort levels
- Designed to meet the requirements of HCPCS Code E0184

Specifications

Item	UOM	Meets HCPCS	Overall Width		Overall Length		Overall Thickness		Shipping Weight		Weight Capacity		Comfort Level	Raised Side Bolsters	Defined Perimeter	Soft-Heal Zone	Soft-Heal Slope	Pressure Reduction	Zippered Cover	Meets 16CFR1633	Made in USA	Mattress in months warranty	Cover in months	
			inch	cm	inch	cm	inch	cm	lb	kg	lb	kg												
71980-1633F	1/ea	E0184	35	88.90	80	203.20	7	17.78	24	10.89	400	181.44	firm	—	■	■	—	■	■	■	■	■	60	12
71980-1633S	1/ea	E0184	35	88.90	80	203.20	7	17.78	24	10.89	400	181.44	soft	—	■	■	—	■	■	■	■	■	60	12
7198042-1633F	1/ea	E0184	42	106.68	80	203.20	7	17.78	35	15.88	400	181.44	frm	—	■	■	—	■	■	■	■	■	60	12
7198042-1633S	1/ea	E0184	42	106.68	80	203.20	7	17.78	35	15.88	400	181.44	soft	—	■	■	—	■	■	■	■	■	60	12

■ Standard ■ Optional ■ Available ■ Not Available ■ Accessory — Does Not Apply ● Active Hyperlink
 1 approximate - as size changes so does weight to a minor degree
 2 data on file



GF Health Products, Inc. is an Intertek ISO 13485:2016 / MDSAP Certified Company

Color variations may occur due to monitor or printer settings.

Product Hyperlinks Enabled
+1 770.368.4700

Information contained herein is subject to change without notice. The most current and complete product information can be found on our website.

www.grahamfield.com



© 2008, GF Health Products, Inc. All Rights Reserved. Lumex is a registered trademark of GF Health Products, Inc.



GF0800050 Rev.E22