

# The Savannah Collection

**Basic  
American**<sup>TM</sup>



*Proudly Made in The USA*

## Casegood Construction



Drawer fronts are separate from the drawer box, simplifying replacement, if necessary.

Drawer construction includes dowels and staples on sides with an additional bead of glue along perimeter of drawer bottom.



Dressers and bedside cabinets have a stile across the back and between each drawer for structural support.

Self-closing drawers have metal drawer slides that are tested to 100 lb capacity per drawer and have drawer stops for safety. Drawers are easily removable by lifting up over the glides.

Ventilated backs of bed sides and dressers promote airflow.

All units have smooth floor glides for ease of movement.

All bed sides, dressers, and wardrobes have a full bottom board for structural support.



European-style hinges provide superior strength and adjustability. Doors can be removed without removing hinges from either the door or cabinet. Hidden hinges offer 110 degree swing and are self-closing.

Wardrobe clothes bar height is adjustable.

Wardrobes have two stiles across the back for added structural support. We can also supply a gap-filler, if requested, so that the wardrobes can be attached to the wall.

All bed sides, dressers, and wardrobes have a full bottom board for structural support.

All units have smooth floor glides for ease of movement.

Wardrobes provide four top access points to the 4" levelers for easy adjustment with a screw driver or socket ratchet to accommodate uneven floor surfaces.

Optional locks are available for all units. Locks are generally placed on the top bedside drawer or on wardrobe doors. Two keys are provided per lock. Master keys are available with initial order.

# The Savannah Collection Design Specifications



Three Drawer  
Bedside Chest  
A31-52



Door/Drawer  
Bedside Cabinet  
A36-52



Two Door, Two  
Drawer Wardrobe  
B021-52



Frame-style door and drawer fronts Rounded corners.

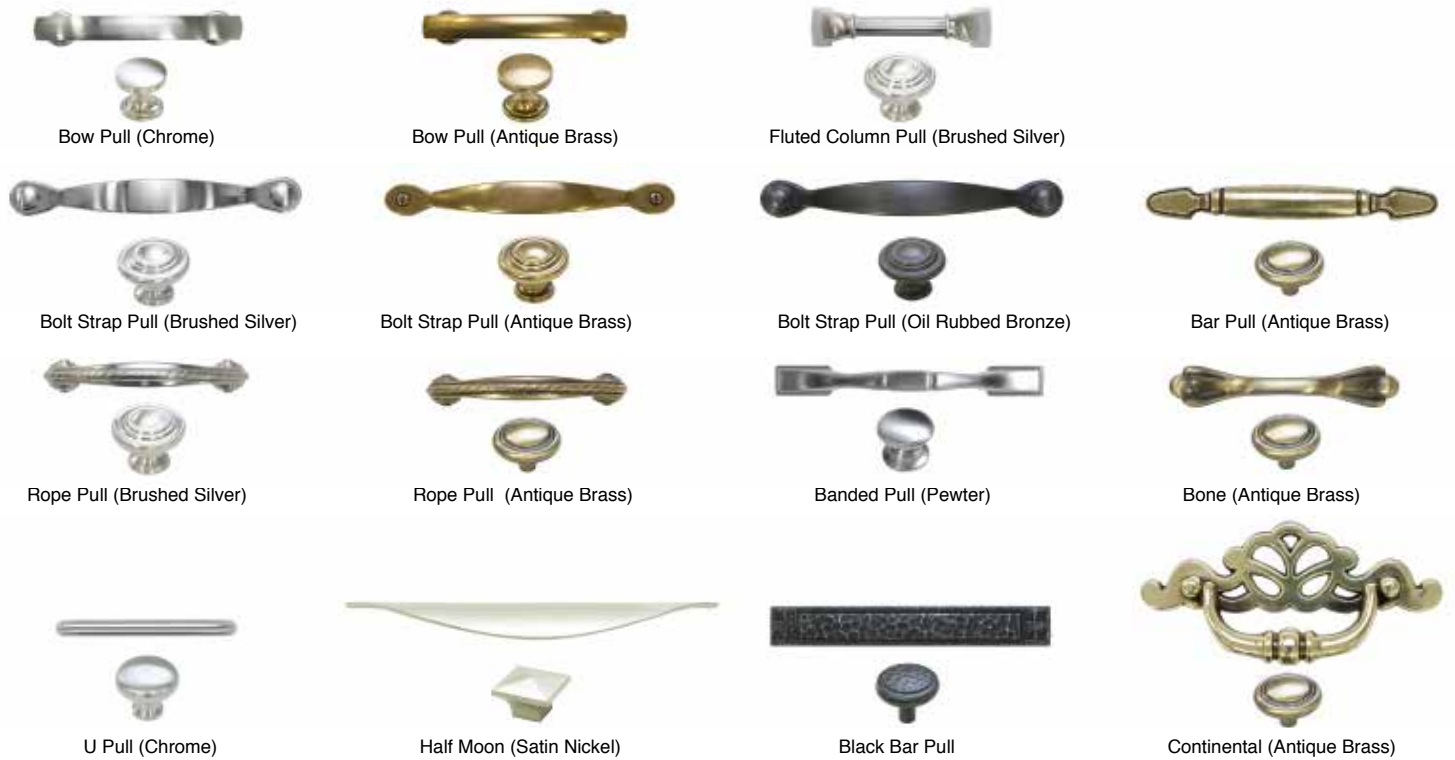
Surface: Laminate  
 Top Edge: Wood, ogee edge  
 Door/Drawer Front Edges: Wood, ogee edge  
 Drawer Style: Inset  
 Kickplate: Three-sided plinth base with cutout  
 Wardrobe: Showtop

## Nominal Dimensions for Casegoods

	Door/Drawer Bedside Cabinet <b>A30-52</b> W-21", D-18", H-30"
	Three Drawer Bedside Chest <b>A31-52</b> W-21", D-18", H-30"
	Three Drawer Dresser <b>A36-52</b> W-30", D-18", H-30"
	Four Drawer Dresser <b>A37-52</b> W-30", D-18", H-36"
	Side-by-Side Six Drawer Dresser <b>A371-52</b> W-42", D-18", H-30"
	Two Door Wardrobe <b>B01-52</b> W-24", D-22", H-76" <b>B011-52</b> W-30", D-22", H-76" <b>B012-52</b> W-36", D-22", H-76" <b>B013-52</b> W-42", D-22", H-76" <b>B014-52</b> W-48", D-22", H-76"
	Two Door, Two Drawer Wardrobe <b>B02-52</b> W-24", D-22", H-76" <b>B021-52</b> W-30", D-22", H-76" <b>B022-52</b> W-36", D-22", H-76"
	Two Door, Side-by-Side Four Drawer Wardrobe <b>B023-52</b> W-42", D-22", H-76" <b>B024-52</b> W-48", D-22", H-76"
	Armoire, 4 Drawer <b>B021TV-52</b> W-30", D-23", H-66"

Special Order custom sizes of casegoods are available.

## Casegood Hardware Selections:



## Savannah Collection is available in the following finishes:



## FRAME CONTRASTING FINISHES



**1.678.201.3200 Fax 1.770.368.4954**

Information contained herein is subject to change.  
The most current and complete product information can be found on our website.

**[www.grahamfield.com](http://www.grahamfield.com)**

Follow us on   



© 2016, GF Health Products, Inc. All Rights Reserved.  
Basic American Medical Products is a trademark of GF Health Products, Inc.  
GF Health Products, Inc. is an ISO 13485 Certified Company.