



BASIC AMERICAN
MEDICAL PRODUCTS

336 Trowbridge Dr., Fond du Lac, WI 54937; Customer Service 800-365-2338



FLEX MANUAL DRIVE BED INSTRUCTIONS FOR USE

To avoid injury or damage to the bed, please read all sections pertaining to the bed model before use. For information on other products, such as Patient Aids and Patient Room or Common Area Furniture, please call 800-554-9215 or visit our web site at www.grahamfield.com.

**Basic American Medical Products is a manufacturing facility of
GF Health Products, Inc., 2935 Northeast Parkway, Atlanta, GA 30360**

ETL LISTING INFORMATION
UL 2601-1
CAN/CSA-C22.2 NO.601.1

TABLE OF CONTENTS

SECTION ONE

PAGE 3	INSPECTION MAINTENANCE PLAN
PAGE 4	ASSEMBLY INSPECTION
PAGE 5	SAFETY SUMMARY
PAGE 8	SIDE RAIL INSPECTION PLAN
PAGE 9	BED SPECIFICATIONS
PAGE 11	BOARD SPECIFICATIONS
PAGE 12	FEATURES
PAGE 13	ELECTRICAL/MATERIALS/CONSTRUCTION SPECIFICATIONS
PAGE 14	BED FINISH/GENERAL SPECIFICATIONS

SECTION TWO

PAGE 16	SLEEPING SURFACE ASSEMBLY
PAGE 18	MANUAL/ELECTRIC FRAME AND LIFT ASSEMBLY
PAGE 20	FLEX BED LEG ASSEMBLY
PAGE 22	ELECTRIC FLEX INFORMATION
PAGE 32	MANUAL FLEX INFORMATION
PAGE 36	SEMI-ELECTRIC FLEX INFORMATION

SECTION THREE

PAGE 39	THREE-QUARTER TRIGGER RAIL KIT
PAGE 40	HALF TRIGGER RAIL KIT (SLEEPING SURFACE MOUNT HEAD RAIL)
PAGE 41	HALF TRIGGER RAIL KIT (MAIN FRAME MOUNT FOOT RAIL)
PAGE 42	
PAGE 43	TRAPEZE ADAPTER KIT
PAGE 45	FOOT SECTION RATCHET KIT
PAGE 46	FIXED PANEL MOUNTING KIT
PAGE 47	REMOVABLE PANEL MOUNTING KIT
PAGE 48	FLEX BED UNI-LOCK LEG KIT
PAGE 49	FLEX BED WALLSAVER KIT
PAGE 50	MANUAL CRANK DUST COVER
PAGE 51	TWIN-TRAX ASSEMBLY
PAGE 52	ZIMMER TRACTION ADAPTER

SECTION FOUR

PAGE 54	TROUBLE SHOOTING GUIDE
---------	------------------------

INSPECTION MAINTENANCE PLAN
PACKAGING/HANDLING INSPECTION

INSPECTION OF ALL COMPONENTS

Inspect – Receipt of shipment

1. Check bed components for obvious damage.
2. Inspect power supply cord for cuts and/or damage.
3. Check that the actuator cords are connected properly into the control box.

ASSEMBLY INSPECTION-MECHANICAL

SLEEPING SURFACE, FRAME AND BASE ASSEMBLIES

Inspect – 1 Year

1. Inspect welds on the sleeping surface, frame, and base assemblies for stress fractures.
2. Inspect all fasteners for wear and looseness.

HEAD/FOOT AND HI/LO ACTUATOR/PULL TUBES

Inspect – 1 Year

1. Inspect head, foot, and hi/lo torque tube components for excessive wear.
2. Inspect head, foot, and hi/lo torque tubes for bends, wear or stress damage. Clevis pins on head, and hi/lo pull tubes should not be bent.
3. Tighten all actuator mounting hardware.

CASTERS

Inspect – 1 Year

1. Check locks on both locking casters to ensure they are operational.
2. Check casters to ensure they roll properly.

ASSEMBLY INSPECTION – ELECTRICAL

CONTROL BOX

Inspect – 6 Months

1. Check power cord for chafing cuts or wear.
2. Make sure all attaching hardware is securely tightened.
3. Check electrical connections for wear or fractures.

PENDANT

Inspect – 6 Months

1. Check pendant cord for chafing cuts or wear.
2. Check all pendant functions:
 - Head raises and lowers properly.
 - Foot raises and lowers properly.
 - Bed raises and lowers properly (full electric only).

Note: Follow electrical troubleshooting guide if failures are experienced.

3. Check to make sure each button and associated function correspond (example: Activate HEAD UP button and head section raises).

ACTUATORS

Inspect – 6 Months

1. Check actuator cords for chafing cuts or wear.
2. Check range of movement on all motors to ensure they do not bind in the **FULL UP** or **FULL DOWN** position.

Note: Should binding occur, adjust the pull tube of the actuator by turning it clockwise or counter clockwise (in or out) just enough to allow the motor to shut off automatically. Failure to do so will damage the head, foot, hi/lo function, and the internal gears of the actuator.

3. Lubricate acme screws as needed with petroleum jelly.

This maintenance inspection plan contains guidelines to ensure correct bed maintenance procedures are followed and is included as a reference only. If any problems arise during testing of the bed(s), refer to the owner's Assembly/Operating Manual or contact Basic American Metal Products Customer Service Department for Technical Support at (800) 365-2338.

SAFETY SUMMARY

Warning/Caution labels applied to the bed apply to hazards or unsafe practices that could result in personal injury and/or property damage.

NOTICE

The information contained in this document is subject to change without notice.

Check all parts for shipping damage and test before using. In case of damage, do NOT use. Contact the Manufacturer for further instructions.

WARNING – OPERATING INFORMATION

When using nasal or masked type administering equipment, oxygen or air tubing MUST be routed and secured properly to ensure that tubing does NOT become entangled and eventually severed during normal operation of Manual/Electric bed.

When operating/moving Manual/Electric Beds, ALWAYS ensure that the individual confined to the bed is positioned properly within the confines of the bed. DO NOT let any extremities protrude over the side or between the bed rails when performing these functions.

Pendant cord MUST be routed and secured properly to ensure that cord does NOT become entangled and eventually severed during using electric cords which may get tangled around the bed, side rails or legs) during operation of Manual/Electric beds: normal operation of Manual/Electric bed.

Keep ALL moving parts free of obstructions (i.e. blankets/sheets, heating blankets/pads, tubing, wiring, etc. and other types of products

SAFETY SUMMARY (Continued)

DO NOT use the side rails as push handles for moving the bed.

Trapeze units must be used ONLY in ASSISTING the patient in repositioning or transferring in or out of bed. NEVER allow patients to use a trapeze unit as a total individual weight support.

NEVER permit more than one (1) person on/in the bed at any time.

Body weight should be evenly distributed over the sleeping surface of the bed. DO NOT lay, sit or lean in such a way that your entire body weight is placed only on RAISED head or foot sections of the bed. This includes when assisting in repositioning or transferring in or out of bed.

ELECTRICAL

The bed is equipped with a three-prong (grounding) plug for protection against possible shock hazard. DO NOT, under any circumstances, cut or remove the round grounding prong from any plug used on Basic American Metal Products.

DO NOT remove caution/warning labels applied to bed.

NEVER operate the bed if a cord or plug is damaged, or if it is not working properly; contact Qualified Service Personnel for examination and repair.

SAFETY SUMMARY (Continued)

REPAIR OR SERVICE INFORMATION

Do NOT open assemblies such as the actuators, hand control, and control box. Only trained service personnel certified by Basic American Metal Products are qualified to repair these parts. If uncertified individuals perform work on these products, the warranty is voided.

DO NOT use unauthorized parts, accessories, or adapters other than those authorized by Basic American Metal Products.

Unplug the power cord when performing any maintenance on the bed.

RADIO FREQUENCY INTERFERENCE

Most electronic equipment is influenced by Radio Frequency Interference (RFI). Caution should be exercised with regard to the use of portable communications equipment in the area around such equipment. If RFI causes erratic behavior, shut the bed OFF immediately. Leave OFF while transmission is in progress.

WEIGHT LIMITATION

The weight limitation for Manual/Electric bed; taking into consideration patient size, proper positioning, realignment, transfer and overall care; is 450 pounds.

SIDE RAIL INSPECTION PLAN

PACKAGING/HANDLING INSPECTION

INSPECTION OF ALL COMPONENTS

Inspect – Receipt of shipment

1. Check side rail components for obvious damage.
2. Check hardware package assuring all hardware is available for proper assembly.

ASSEMBLY INSPECTION – MECHANICAL

SIDE RAIL ASSEMBLY (Rail options do not apply to Lomax Bed)

Inspect – 3 Months

1. Inspect side rails welds for stress fractures.
2. Inspect all fasteners for wear and looseness, replace and tighten as needed.
3. Bent side rails should be replaced immediately.
4. Lubricate all pivot points as needed.

Note: Contact Basic American Metal Products Customer Service Department for Technical Support at (800) 365-2338.

Safety Summary

Side rails when used with a Manual/Electric bed DO NOT fall within any weight limitations. Side rails can be deformed or broken if excessive side pressure is exerted on the side rails. These side rails are for the purpose of preventing an individual from inadvertently rolling/climbing out of a bed. If an individual is capable of injuring himself/herself, an alternative means of preventing the patient from rolling/climbing out of a bed should be initiated.

Additional safety measures should be considered for patients identified as high risk for entrapment. Such patients include those with pre-existing conditions such as confusion, restlessness, lack of muscle control, altered mental status (organic or medication related), or a combination of these factors. Increased risk also occurs when the patient's size and/or weight are inappropriate for the bed's dimensions.

DO NOT use the side rails as push handles for moving the bed.

SPECIFICATIONS

DIMENSIONS

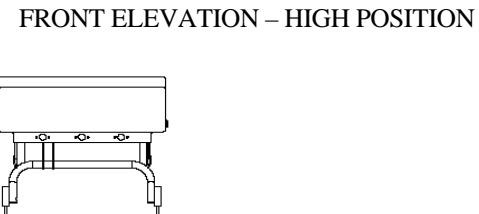
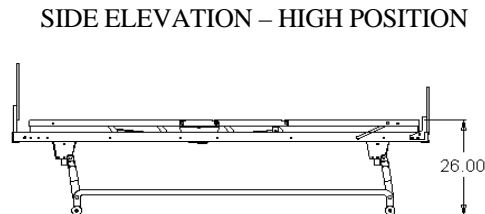
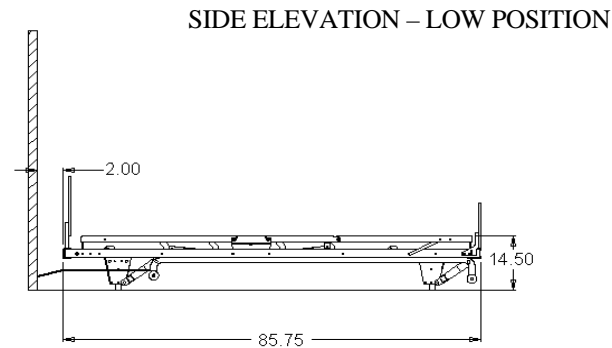
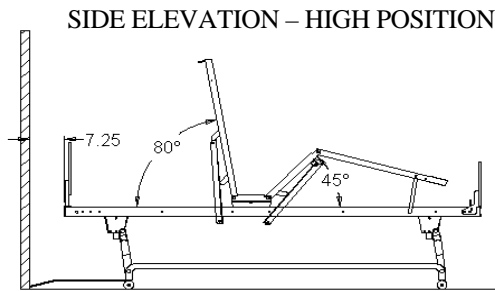
Table 1

	76"	80"
Overall Length (Includes ½" rubber bumper)	81.75"	85.75"
Overall Width (With rails)	40.50"	40.50"
Overall Width (With boards)	35.88	35.88"
Overall Width (Without boards)	35.25"	35.25"
Length of Mattress Surface	75.75"	79.75"
Mattress Platform Height (Low Position)	SEE DIAGRAMS	SEE DIAGRAMS
Mattress Platform Height (High Position)	SEE DIAGRAMS	SEE DIAGRAMS
Maximum Knee Elevation	45 ⁰	45 ⁰
Maximum Head Elevation	80 ⁰	80 ⁰

FLEX BED WITH
ROUND TUBE AND
3" CASTERS

ALL MEASUREMENTS
ARE IN INCHES UNLESS
OTHERWISE SPECIFIED

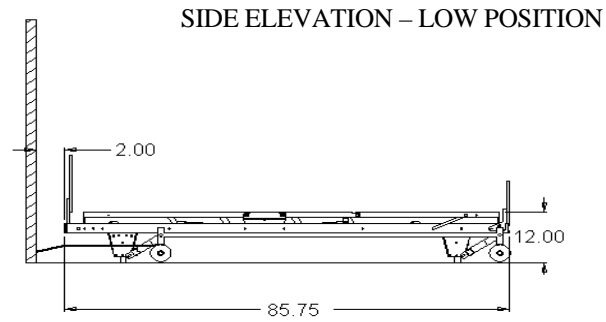
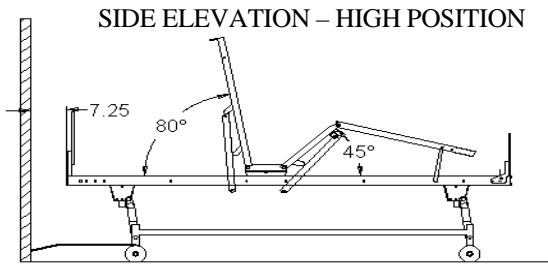
MEASUREMENTS IN
DIAGRAM ARE FOR 80"
BED. 76" DIMENSIONS
ARE LOCATED IN CHART
AT TOP OF PAGE.



FLEX BED WITH SQUARE TUBE AND 3" CASTERS

ALL MEASUREMENTS ARE IN INCHES UNLESS OTHERWISE SPECIFIED

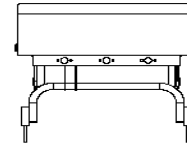
MEASUREMENTS IN DIAGRAM ARE FOR 80" BED. 76" DIMENSIONS ARE LOCATED IN CHART AT TOP OF PAGE 9.



SIDE ELEVATION – HIGH POSITION



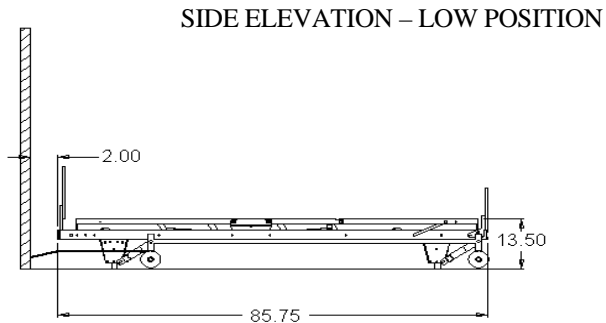
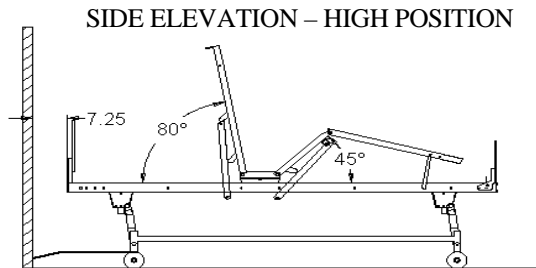
FRONT ELEVATION – HIGH POSITION



FLEX BED WITH SQUARE TUBES AND 4" CASTERS.

ALL MEASUREMENTS ARE IN INCHES UNLESS OTHERWISE SPECIFIED

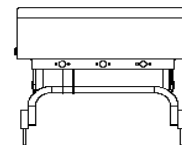
MEASUREMENTS IN DIAGRAM ARE FOR 80" BED. 76" DIMENSIONS ARE LOCATED IN CHART AT TOP OF PAGE 9.



SIDE ELEVATION – HIGH POSITION

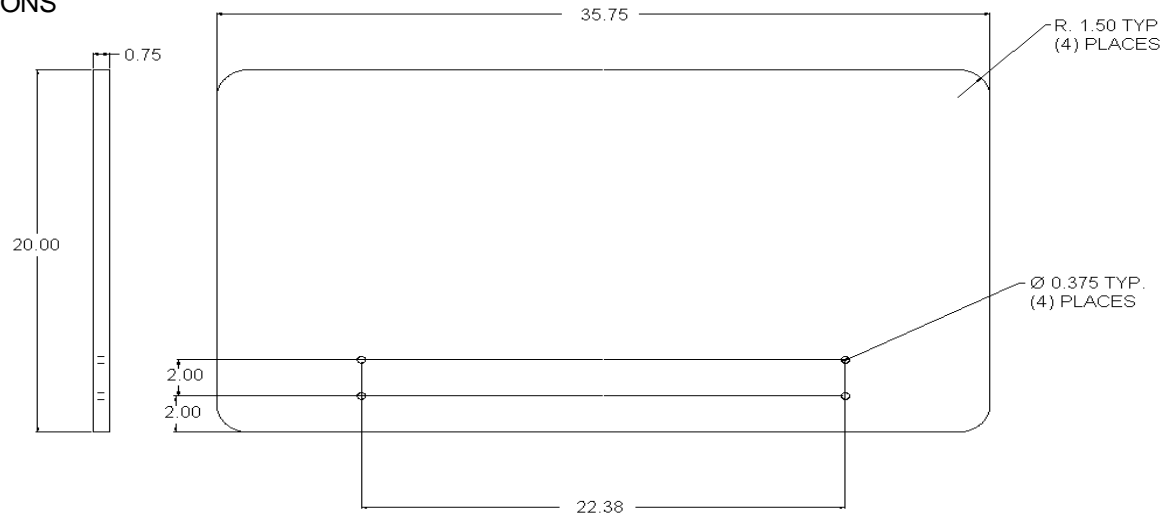


FRONT ELEVATION – HIGH POSITION



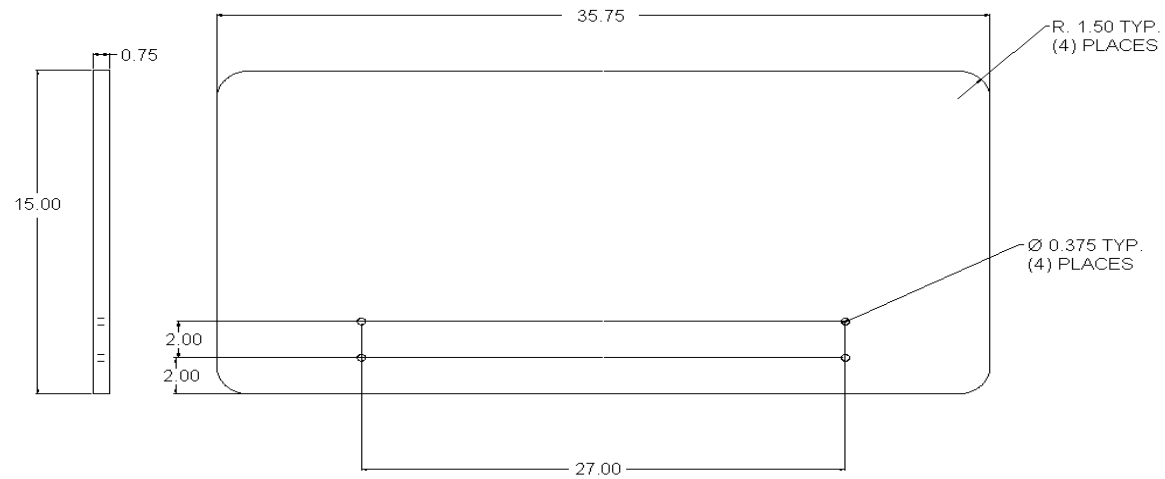
HEAD BOARD

CONTACT MANUFACTURER
BEFORE MAKING SIGNIFICANT
VARIATIONS TO DIMENSIONS



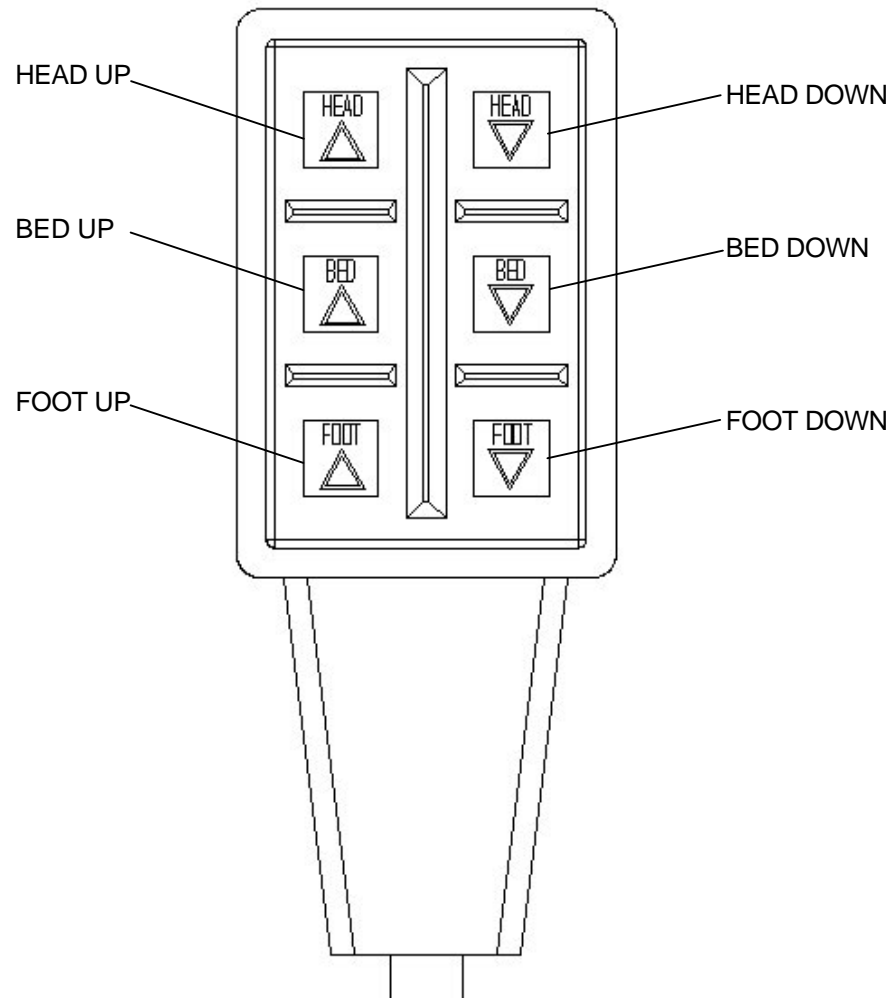
FOOT BOARD

CONTACT MANUFACTURER
BEFORE MAKING SIGNIFICANT
VARIATIONS TO DIMENSIONS



FEATURES

- **PATIENT CONTROLS:** Each bed is equipped with a pendant type hand control as standard equipment. Each control function (head, knee, and bed) has two clearly identifiable switches for up and down travel. The controls are designed to prevent damage to the motor in the event that both the up and down functions are activated simultaneously.



- **IV/Fracture Frame Receptacle:** There are two IV sockets located at the seat section.

ELECTRICAL SPECIFICATIONS:

115 VOLT HIGH/LOW MOTOR:

- 4.0 Amps maximum
- 115 Volts AC, 60 cycles
- Automatic thermal protection
- 1/10 H.P.
- Gear Ratio 19:1
- Permanently lubricated internally
- Instant reversing

220 VOLT HIGH/LOW MOTOR:

- 4.0 Amps maximum
- 220 Volts AC, 60 cycles
- Automatic thermal protection
- 1/10 H.P.
- Gear Ratio 19:1
- Permanently lubricated internally
- Instant reversing

115 VOLT HEAD/FOOT MOTOR:

- 4.0 Amps maximum
- 115 Volts AC, 60 cycles
- Automatic thermal protection
- 1/10 H.P.
- Gear Ratio 19:1
- Permanently lubricated internally
- Instant reversing

220 VOLT HEAD/FOOT MOTOR:

- 4.0 Amps maximum
- 220 Volts AC, 60 cycles
- Automatic thermal protection
- 1/10 H.P.
- Gear Ratio 19:1
- Permanently lubricated internally
- Instant reversing

PRINTED CIRCUIT BOARDS: All circuit boards are tested by the board manufacturer, and by B.A.M.P. assembly department prior to shipping.

ELECTRICAL CORD AND PLUG: Hospital grade, U.L./C.S.A. listed. The cord is #16 AWG 3 conductor type SJT. The cord extends 92" from the end of the bed.

MATERIALS/CONSTRUCTION SPECIFICATIONS:

Base Frame: Welded tubular construction.

Main Frame: 10 Ga. (.135) high strength, low alloy steel (Roll formed).

Sleeping Surface 11 Ga. (.120), cold rolled steel (Roll formed).

Spring Fabric: Steel wire and steel coil spring assembly.

Springs: (12 Ga. coil)

Fabric: (080 dia.) doubled up wire, Approx. 2 x 4 spacing

Load Limits: 450# Evenly Distributed.

BED FINISH SPECIFICATIONS:

All finished parts are thoroughly cleaned in a five-stage wash before powder coating.

- **Stage 1:** Alkaline bath to clean grease and oil off of steel, aluminum, zinc, copper, and brass in spray washing machines.
- **Stage 2:** Fresh water rinse
- **Stage 3:** Iron phosphate conversion coating used for pre-paint treatment for ferrous metals.
- **Stage 4:** Cold water rinse
- **Stage 5:** Chem. Seal 3610, additional corrosive protection used to remove unreacted phosphate salts leaving surface ready to paint.

All parts are then coated with a taupe colored epoxy powder and baked 35 minutes at 375 degrees. The powder coating finish is to be approximately 2.5 mils thick. The coating will be a smooth, uniform finish without runs, wrinkles, or grit.

GENERAL SPECIFICATIONS:

DRIVE UNITS: There are 3 individual motors to operate the head, knee, and high/low functions. The motors have a plug in type connector to allow for easy removal in the event of a motor problem. The motors will be overload protected, with an automatic thermal reset.

FINAL ASSEMBLY AND TESTING: The bed is to be fully assembled and tested at the manufacturing facility before shipping. The only necessary assembly by the customer will be attachment of the head and footboards to the bed frame; all other components will be attached. All beds will be completely tested for proper operation. The bed will be tested for insulation and leakage current. The testing results for each bed will be recorded and kept on file at the manufacturing facility for proof that the bed has been tested and is operating properly at the time of shipment.

SECTION TWO

ASSEMBLY PRINTS/BILL OF MATERIALS

SLEEPING SURFACE ASSEMBLY

ITEM	QTY 76"	PART NUMBER	DESCRIPTION	PART NUMBER	QTY 80"	QTY 84"
18	4	806-0277-008	SELF WRENCHING NUT - BIG	806-0277-008	4	4
17	6	100-2500-002	NON-SKID TAPE 1" x 8" (NOT SHOWN)	100-2500-002	6	6
16*	24	100-7425-006	¼ x .250 GRIP AL RIVET & MANDREL	100-7425-006	24	24
15*	1	999-0644-013T	PAN, SEAT SECTION – TAUPE	999-0644-013T	1	1
14*	1	999-0644-012T	PAN, THIGH SECTION – TAUPE	999-0644-012T	1	1
13*‡‡	-	-	PAN, HEAD SECTION - TAUPE	999-0644-011T	1	1
12*‡	2	999-0644-010T	PAN, FOOT/HEAD SECTION – TAUPE	999-0644-010T	1	1
11	1	999-0633-940T	WELDMENT KNEE SECTION - TAUPE	999-0633-940T	1	1
10	1	999-0633-930T	WELDMENT, FOOT WING	999-0633-930T	1	1
9**	1	999-0633-925T	WELDMENT, HEAD WING – TAUPE	999-0633-920T	1	1
8	1	999-0633-054T	MATTRESS STOP – TAUPE	999-0633-054T	1	1
7	2	999-0633-048T	STRAP, FOOT END LEVELER – TAUPE	999-0633-048T	2	2
6†	1	999-0098-001	SPRING FABRIC	999-0032-059	1	1***
5†	68	999-0032-057	SIDE HELICAL – 10 COIL	999-0032-057	72	76
4	6	999-0032-010	SELF WRENCHING NUT - SMALL	999-0032-010	6	6
3†	12	806-0015-002	HELICAL SPRING – 22 TURN	806-0015-002	12	12
2	10	100-5431-002	5/16-18 X .375" HWHMS – ZINC	100-5431-002	10	10
1	4	100-4618-001	.125 X 1.00 X .812 CAP – BLACK	100-4618-001	4	4

PART NUMBER AND/OR QUANTITIES IN BOLD PRINT MAY BE DIFFERENT BETWEEN 80" AND 76" BEDS

* ITEMS 12 – 16 USED ON PAN FABRIC BED INSTEAD OF ITEMS 3, 5, AND 6.

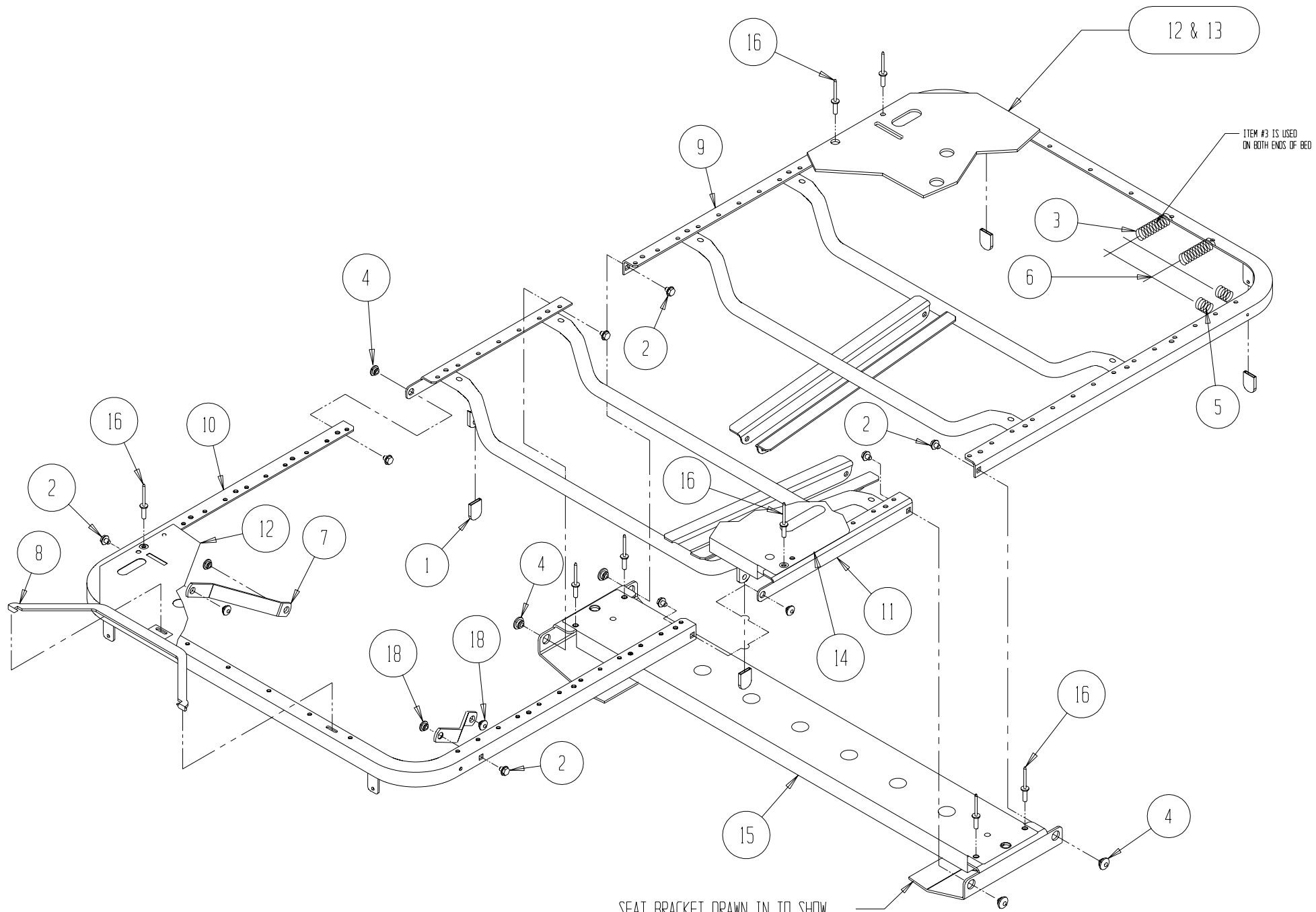
** 84" PART NUMBER – 999-0633-924T.

*** 84" SPRING FABRIC USES 80" SPRING FABRIC PLUS 4" ADDED DURING ASSEMBLY.

† ITEMS 3,5,6 ARE USED ON SPRING FABRIC BEDS INSTEAD OF ITEMS 12 – 16.

‡ ON 80" AND 84" PAN FABRIC BEDS ITEM 12 IS USED ONLY FOR FOOT SECTION PAN.

‡‡ ITEM 13 (84" PAN HEAD SECTION – TAUPE PART NUMBER – 999-0644-014T.) IS FOR HEAD SECTION PAN.



12 & 13

ITEM #3 IS USED ON BOTH ENDS OF BED

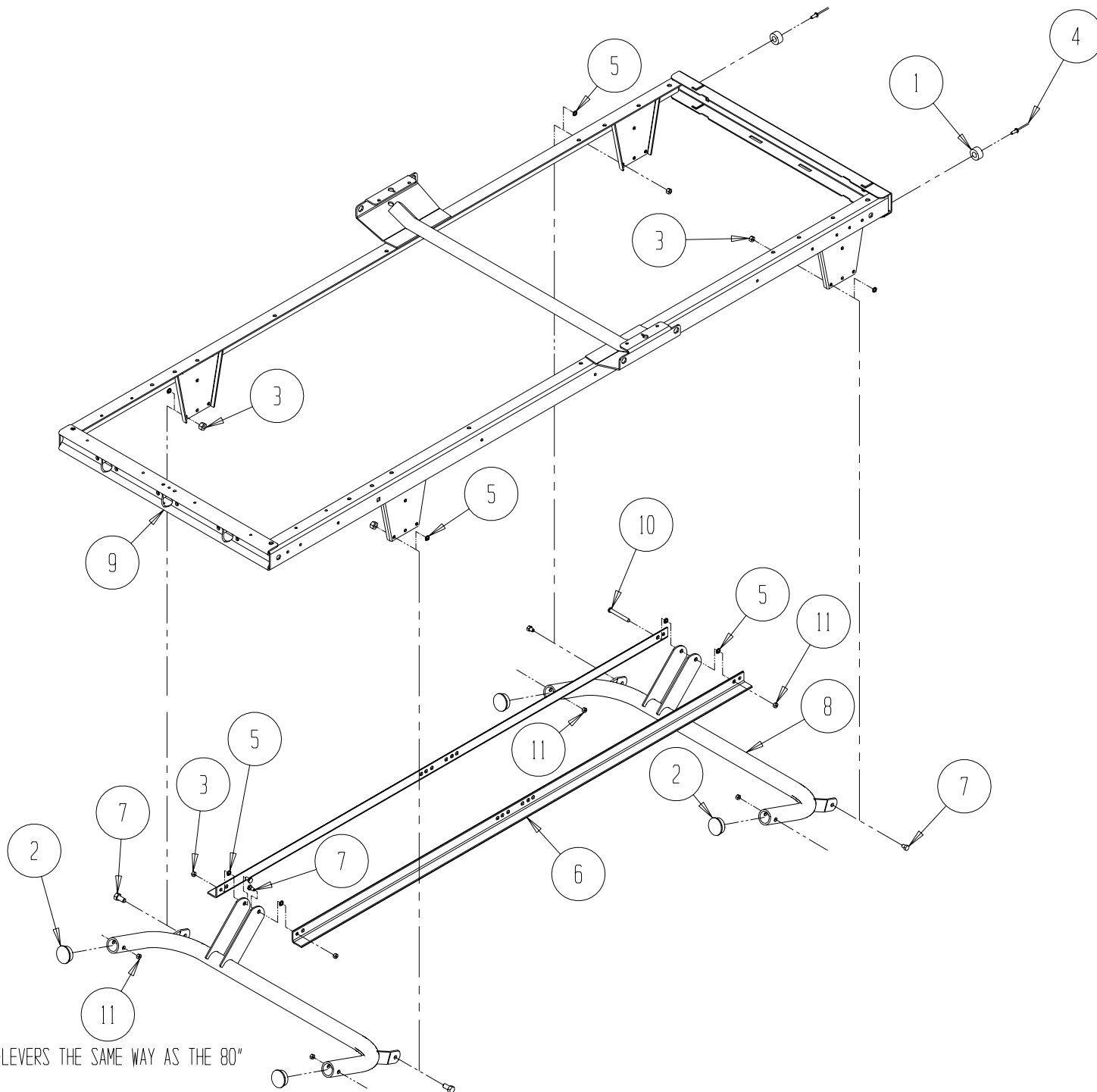
SEAT BRACKET DRAWN IN TO SHOW HOW SLEEPING SURFACE IS ATTACHED TO MAIN FRAME.

FRAME AND LIFT ASSEMBLY

ITEM	QTY 76"	PART NUMBER	DESCRIPTION	PART NUMBER	QTY 80"	QTY 84"
11	5	100-6738-003	3/8-16 NYLON JAM LOCKNUT	100-6738-003	5	5
10	1	100-5438-024	3/8-16 x 3.0" HHCS - ZINC	100-5438-024	1	1
9*	1	999-0633-910T	WELDMENT, FRAME – TAUPE	999-0633-900T	1	1
8	2	999-0633-903T	WELDMENT, U-LEVER – TAUPE	999-0633-903T	2	2
7	6	999-0633-100	SHOULDER BOLT – U-LEVER MTG.	999-0633-100	6	6
6	2	999-0633-019T	LINK, HI/LO DRAG – TAUPE	999-0633-019T	2	2
5	8	100-8410-004	.625 OD x .4371 ID x .093 THICK WASHER	100-8410-004	8	8
4	2	100-7419-011	3/16 DIAMETER STEEL POP RIVET	100-7419-011	2	2
3	6	100-6731-006	5/16-18 NYLON LOCKNUT THIN (.25)	100-6731-006	6	6
2	4	100-4715-002	END CAP – 1.5" OD 14 GA. – BLACK	100-4715-002	4	4
1	2	100-4515-001	BUMPER – DELTA FLEX, PD	100-4515-001	2	2

*84" FRAME PART NUMBER – 999-0633-912T.

PART NUMBER AND/OR QUANTITIES IN BOLD PRINT MAY BE DIFFERENT BETWEEN 80" AND 76" BEDS



NOTE:

1. 76" FRAME ATTACHES TO U-LEVERS THE SAME WAY AS THE 80" FRAME SHOWN.
2. MANUAL FRAME ATTACHES TO THE U-LEVERS AND SLEEPING SURFACE THE SAME WAY AS THE ELECTRIC FRAME SHOWN.

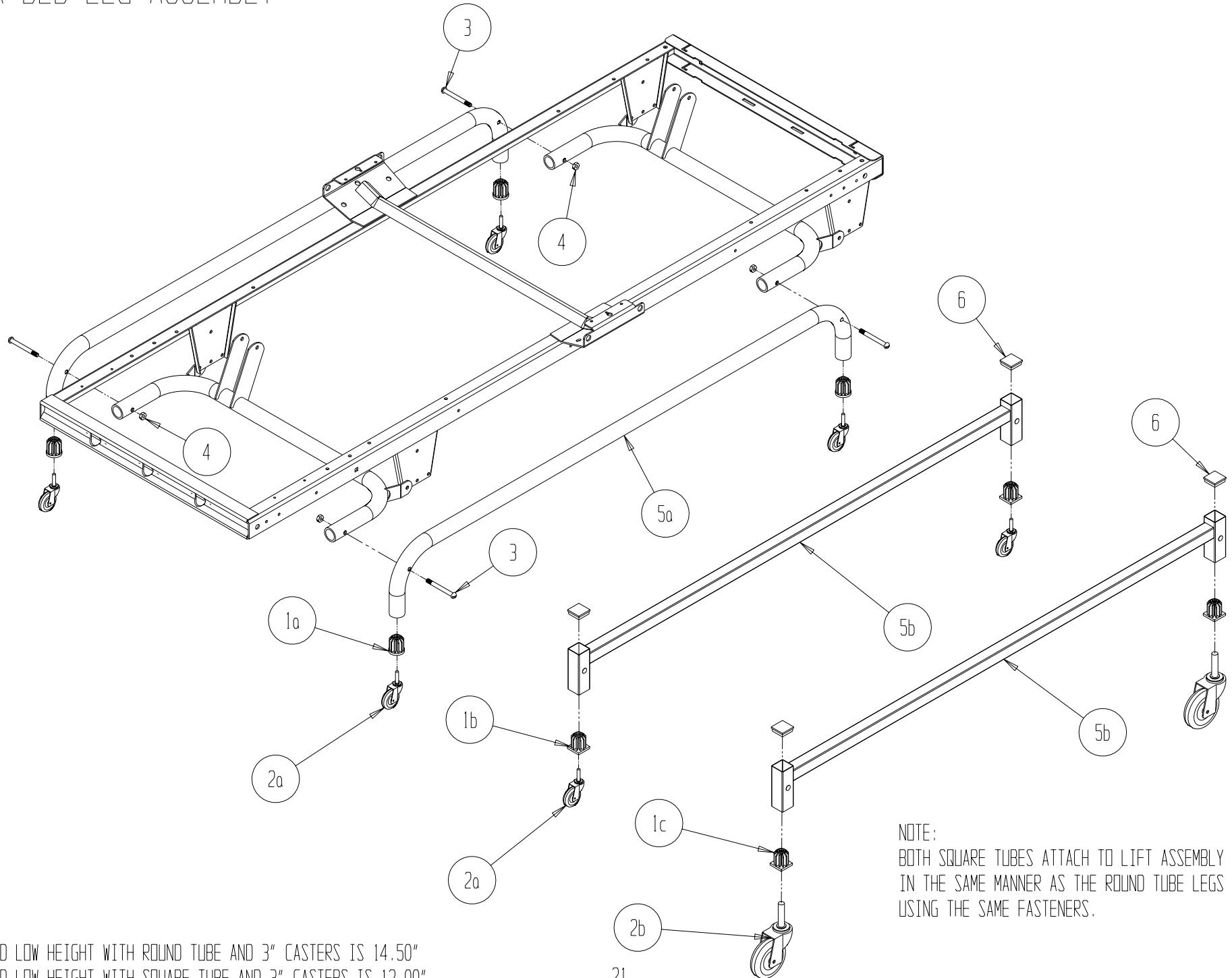
FLEX BED LEG ASSEMBLY

ITEM	QTY	PART NUMBER	DESCRIPTION
6	4	100-4715-003	END CAP, 1.5" SQ. 16 GA.
5b	2	999-0633-904T	WELDMENT, FLEX LEG – TAUPE
5a	2	999-0633-008T	TUBE, FORMED FLEX LEG – TAUPE
4	4	100-6738-003	3/8 – NYLON JAM LOCKNUT
3	4	100-5438-028	3/8 – 16 x 3.50" HHCS – ZINC
2b†	1	999-0617-903	4" DOUBLE LOCK CASTER BAG
2a‡	1	999-0301-904	CASTER BAG, 2 LKG & 2 NON-LOCKING
1c	4	999-0616-002	CASTER INSERT – ½" – 12 UNS
1b	4	806-0072-001	CASTER INSERT 1 ½ SQ. 16 GA.
1a	4	100-4215-005	1 ½ x 17 GA. CASTER SOCKET

† DOUBLE LOCK CASTER BAG CONSISTS OF 4 DOUBLE LOCKING CASTERS (100-0634-014)

‡ CASTER BAG, 2 LOCKING AND TWO NON-LOCKING CONSISTS OF 2 LOCKING (100-6330-015) AND TWO NON-LOCKING (100-6330-005) CASTERS.

FLEX BED LEG ASSEMBLY

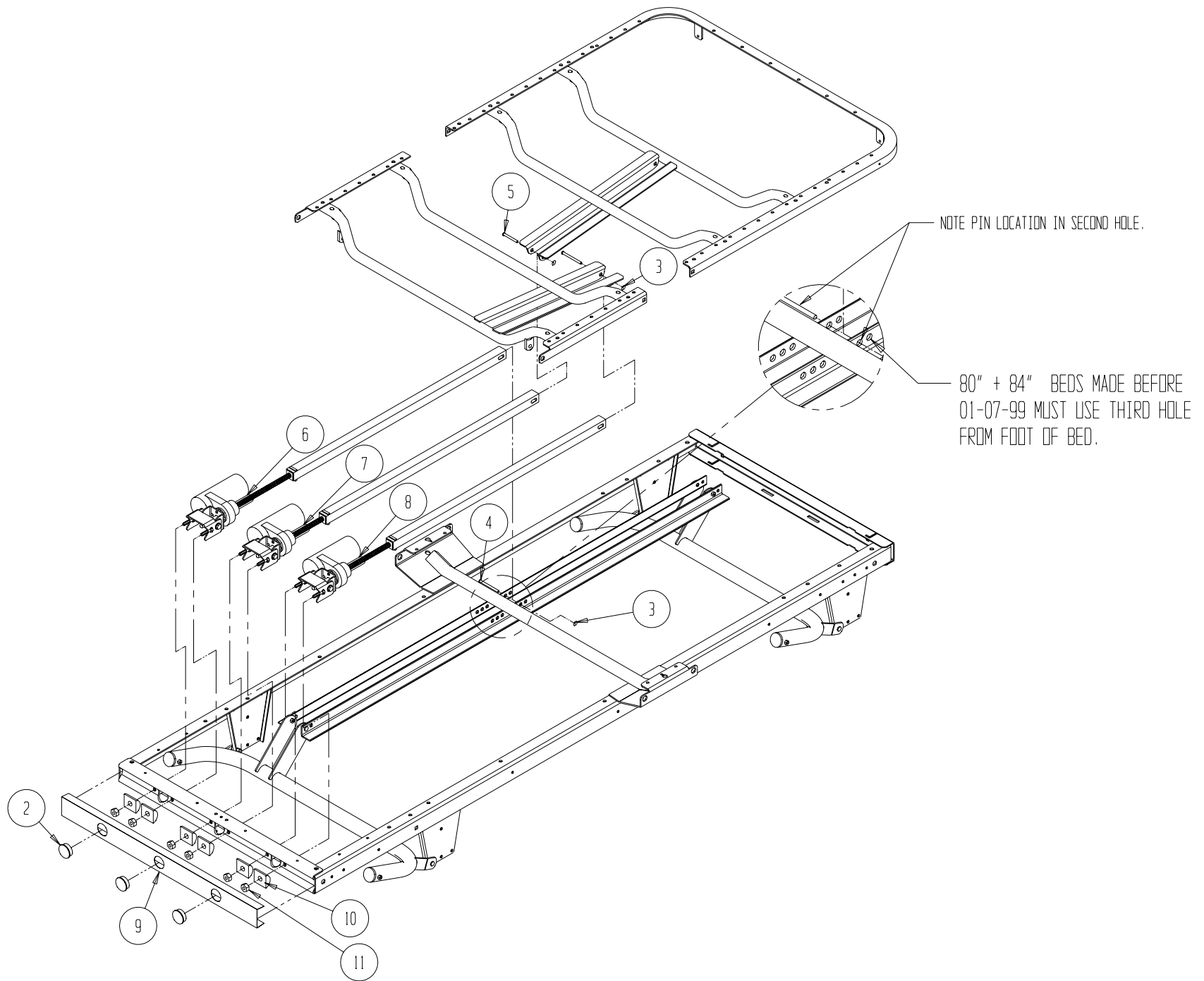


NOTE:
 BOTH SQUARE TUBES ATTACH TO LIFT ASSEMBLY
 IN THE SAME MANNER AS THE ROUND TUBE LEGS
 USING THE SAME FASTENERS.

STANDARD LOW HEIGHT WITH ROUND TUBE AND 3" CASTERS IS 14.50"
 STANDARD LOW HEIGHT WITH SQUARE TUBE AND 3" CASTERS IS 12.00"
 STANDARD LOW HEIGHT WITH SQUARE TUBE AND 4" CASTERS IS 13.50"

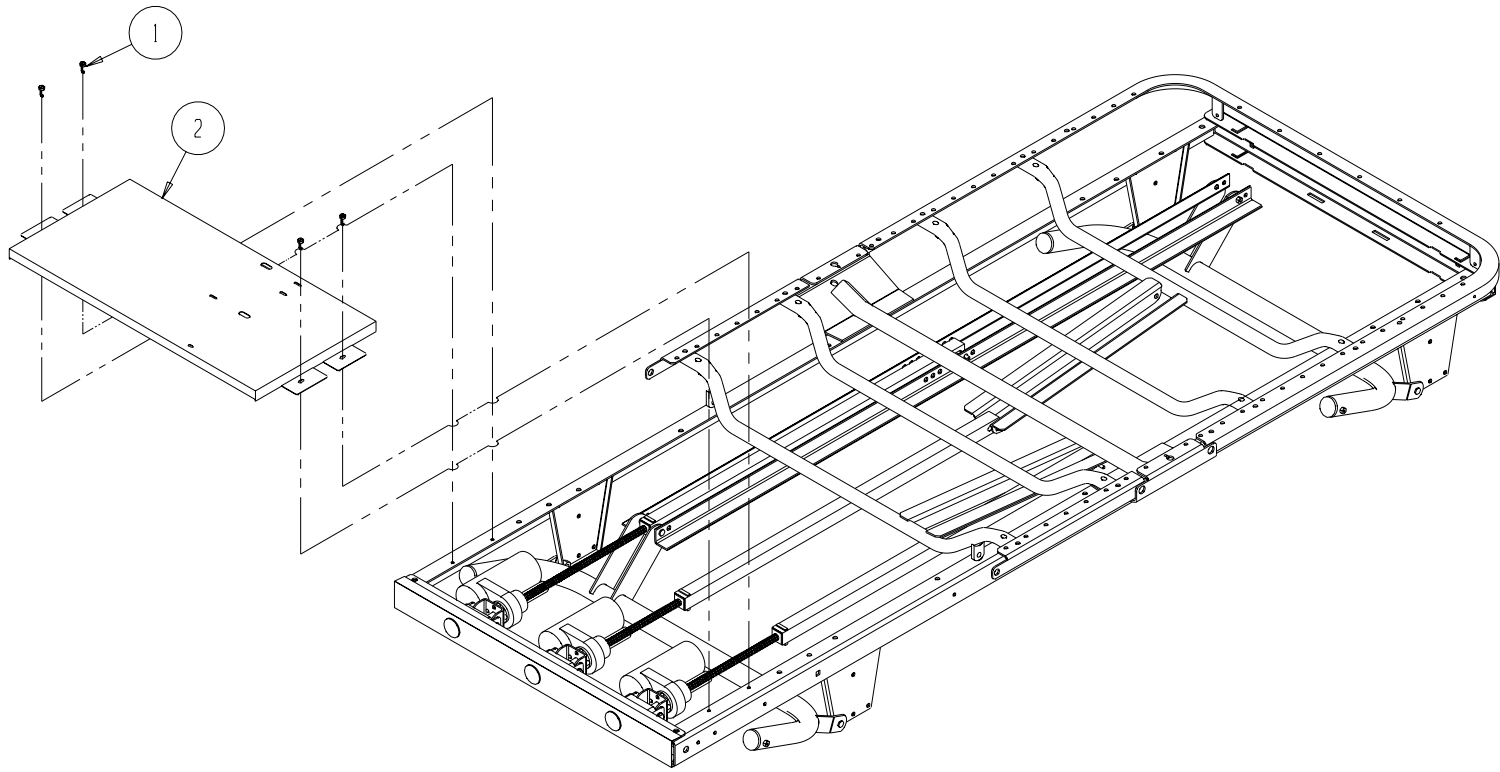
ELECTRIC FLEX BED MAINFRAME/DRIVE PACK ASSEMBLY

ITEM	QTY	PART NUMBER	DESCRIPTION
11	6	100-6731-001	5/16-18 WASHER HEAD LOCKNUTS
10	6	999-0032-007	MALE PIVOT BLOCKS
9	1	999-0651-099	NAME PLATE – COMMONIZED
8	1	SEE PAGE 28 & 29	ACTUATOR FOOT ASSEMBLY
7	1	SEE PAGE 28 & 29	ACTUATOR HEAD ASSEMBLY
6	1	SEE PAGE 28 & 29	ACTUATOR HI/LO ASSEMBLY
5	2	100-7938-009	CLEVIS PIN .375 x 2.25 ZINC
4	1	100-7938-001	.375 CLEVIS x 3.0
3	3	100-7518-001	CIRCLE COTTER – 7/16 – ½ SHAFT
2	3	100-4713-002	HEYCO 1.375 DIA. HOLE PLUG – BLACK
1	6	100-1100-018	CABLE TIE #84-1-0811 (NOT SHOWN)

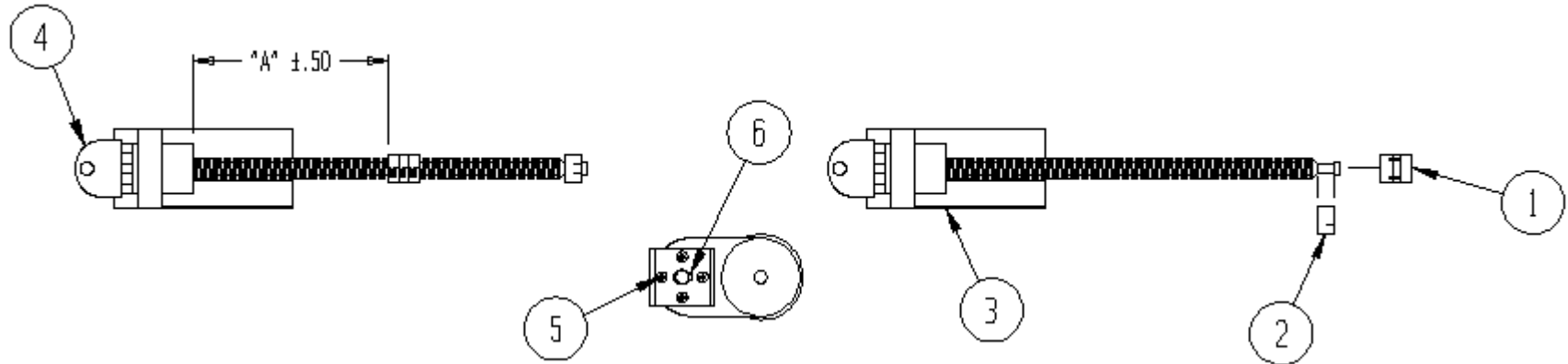


ELECTRIC FLEX BED MAINFRAME/MOTOR COVER ASSEMBLY

ITEM	QTY	PART NUMBER	DESCRIPTION
2	1	999-0651-950T	ASSEMBLY, MOTOR COVER – TAUPE
1	4	100-5425-087	¼ - 20 x .500 HH TYPE 23 EXTSEMS



MOTOR SETTINGS



**NOTE: DIMENSION "A" REPRESENTS:
 HEAD MOTOR – TOTALLY RETRACTED.
 FOOT MOTOR – TOTALLY EXTENDED.
 HI/LO MOTOR – TOTALLY EXTENDED.**

ITEM	QTY	PART NUMBER	DESCRIPTION
6	1	100-7718-005	.188 x .750 ROLL PIN (P01747-0002 VW PN)
5	4	R12023-0002	¼ x ½" SELF TAPPING SCREW
4	1	999-0651-015P	BRACKET, MOTOR MNTG.
3	1	Hd, Ft, Hi-Lo	MOTOR AND THREADED ROD
2	1	999-0301-007	STOP CLIP
1	1	999-0032-090	MAIN NUT – RH

TABLE 1 (NUT DIMENSION) **BEDS PRODUCED BEFORE JAN. 2004**

115 VOLT PN	220 VOLT PN	DESCRIPTION	DIMENSION "A"
999-0651-952	999-0670-952	HEAD ACTUATOR	5.75"
999-0651-953	999-0670-953	FOOT ACTUATOR	7.75"
999-0651-951	999-0670-951	HI/LO ACTUATOR	11.50"

**BEDS PRODUCED BEFORE JAN. 2004
 HAVE BURNDY BLACK FLAT MOTOR
 PLUGS**

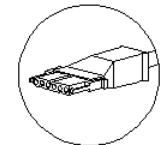
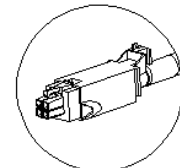


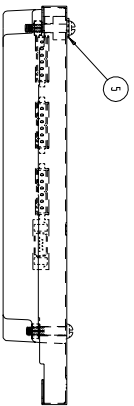
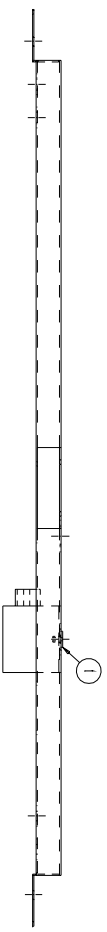
TABLE 1 (NUT DIMENSION) **BEDS PRODUCED AFTER JAN. 2004**

115 VOLT PN	220 VOLT PN	DESCRIPTION	DIMENSION "A"
999-0700-902	999-0752-902	HEAD ACTUATOR	5.75"
999-0700-903	999-0752-903	FOOT ACTUATOR	7.75"
999-0700-901	999-0752-901	HI/LO ACTUATOR	11.50"

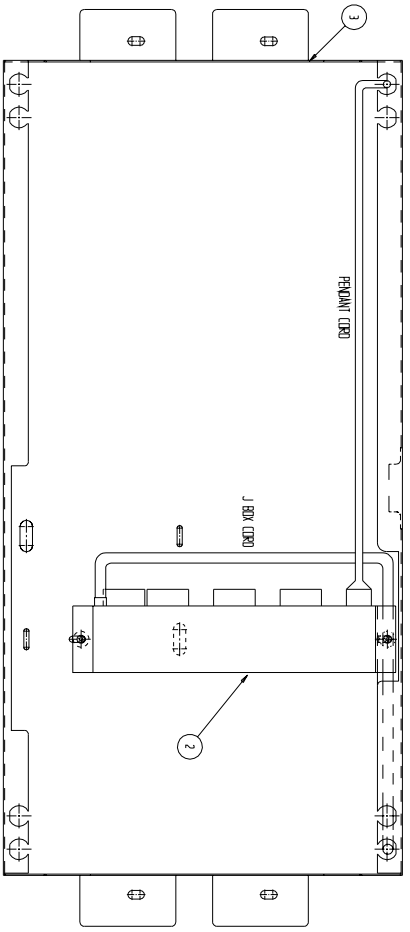
**BEDS PRODUCED AFTER JAN. 2004
 HAVE MOLEX WHITE SQUARE
 MOTOR PLUGS**



PREVIOUS MOTOR COVER ASSEMBLY/BEFORE JAN. 2004



FLAT BURYNDY MOTOR CONNECTORS

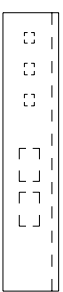
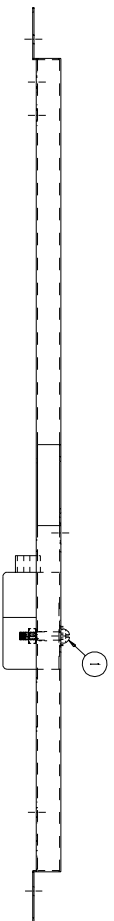


PARTS LIST

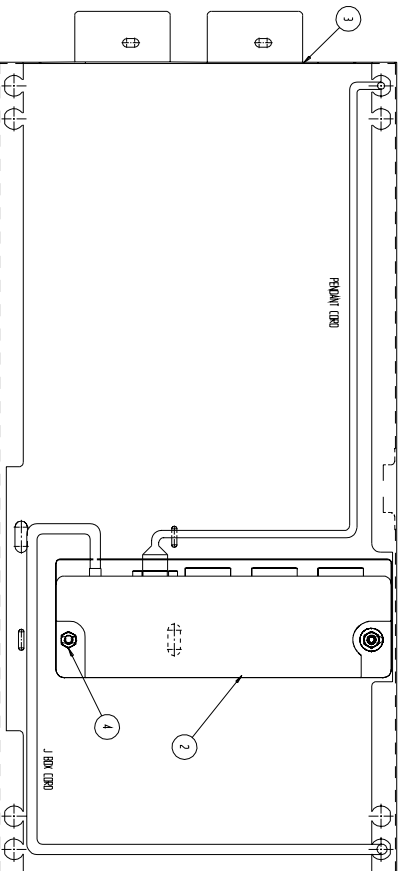
ITEM	QTY	PART NUMBER	DESCRIPTION
7*	1	999-0337-005	HAND CONTROL 6 BUTTON (NOT SHOWN)
6	1	999-0150-199	PANEL, MT PEND HOLDER (NOT SHOWN)
5	1	999-0150-021	CAUTION LABEL (NOT SHOWN)
4	2	100-1138-001	STRAIN RELIEF PLUG (NOT SHOWN)
3	1	999-0651-050T	COVER, LOW VOLTAGE
2**	1	999-0530-003	JUNCTION BOX
1	2	100-7419-011	3/16 DIAMETER POP RIVET

* FOUR BUTTON PENDANT FOR SEMI ELECTRIC BED PART # IS 999-0530-050.
 ** 1. 220 VOLT JUNCTION BOX PART # IS 999-0627-063 W/OUT PLUG AND 999-0627-063P W/PLUG.
 (THE PLUG IS ONLY SUPPLIED FOR ORDERS OF A SIGNIFICANT AMOUNT AND ALSO DEPENDS
 ON WHAT COUNTRY THE BED IS TO BE DELIVERED TO.)

NEW MOTOR COVER ASSEMBLY/AFTER JAN. 2004



WHITE MOLEX SQUARE MOTOR CONNECTORS



999-0700-930T PARTS LIST

ITEM	QTY	PART NUMBER	DESCRIPTION	ITEM	QTY	PART NUMBER	DESCRIPTION	ITEM	QTY	PART NUMBER	DESCRIPTION	ITEM	QTY	PART NUMBER	DESCRIPTION
9	1	999-0700-305	6 FUNCTION PENDANT	9	1	999-0700-355	6 FUNCTION PENDANT W/PUL	9	1	999-0700-205	4 FUNCTION PENDANT				
8	1	999-0700-199	PENDANT HOLDER 700	8	1	999-0700-199	PENDANT HOLDER 700	8	1	999-0700-199	PENDANT HOLDER 700				
7	1	999-0150-021	CAUTION LABEL (NOT SHOWN)	7	1	999-0150-021	CAUTION LABEL (NOT SHOWN)	7	1	999-0150-021	CAUTION LABEL (NOT SHOWN)				
6	1	100-1100-038	STRAIN RELIEF PLUG (NOT SHOWN)	6	1	100-1100-038	STRAIN RELIEF PLUG (NOT SHOWN)	6	1	100-1100-038	STRAIN RELIEF PLUG (NOT SHOWN)				
5	1	100-8610-003	LOCKWASHER SHAKERPD	5	1	100-8610-003	10-32 LOCKWASHER SHAKERPD	5	1	100-8610-003	10-32 LOCKWASHER SHAKERPD				
4	2	100-6710-001	10-32 NYLOCK NUT	4	2	100-6710-001	10-32 NYLOCK NUT	4	2	100-6710-001	10-32 NYLOCK NUT				
3	1	999-0651-050T	COVER, LDW VOLTAGE	3	1	999-0651-050T	COVER, LDW VOLTAGE	3	1	999-0651-050T	COVER, LDW VOLTAGE				
2	1	999-0700-300	6 FUN. J-BOX 2601	2	1	999-0700-300	6 FUNCTION JUNCTION BOX	2	1	999-0700-300	6 FUNCTION JUNCTION BOX				
1	2	100-5410-001	1.5" LONG 10-32 PHILLIPS HEAD	1	2	100-5410-001	1.5" LONG 10-32 PHILLIPS HEAD	1	2	100-5410-001	1.5" LONG 10-32 PHILLIPS HEAD				

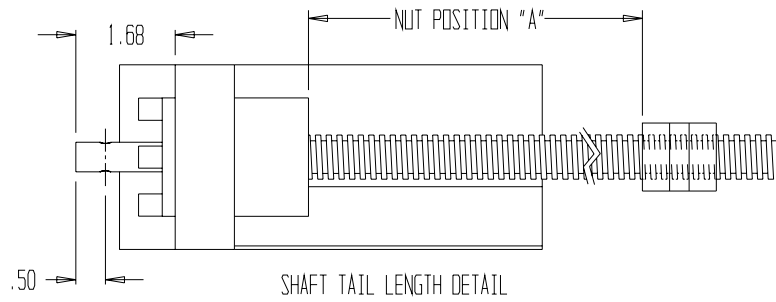
999-0700-935T PARTS LIST

999-0700-920T PARTS LIST

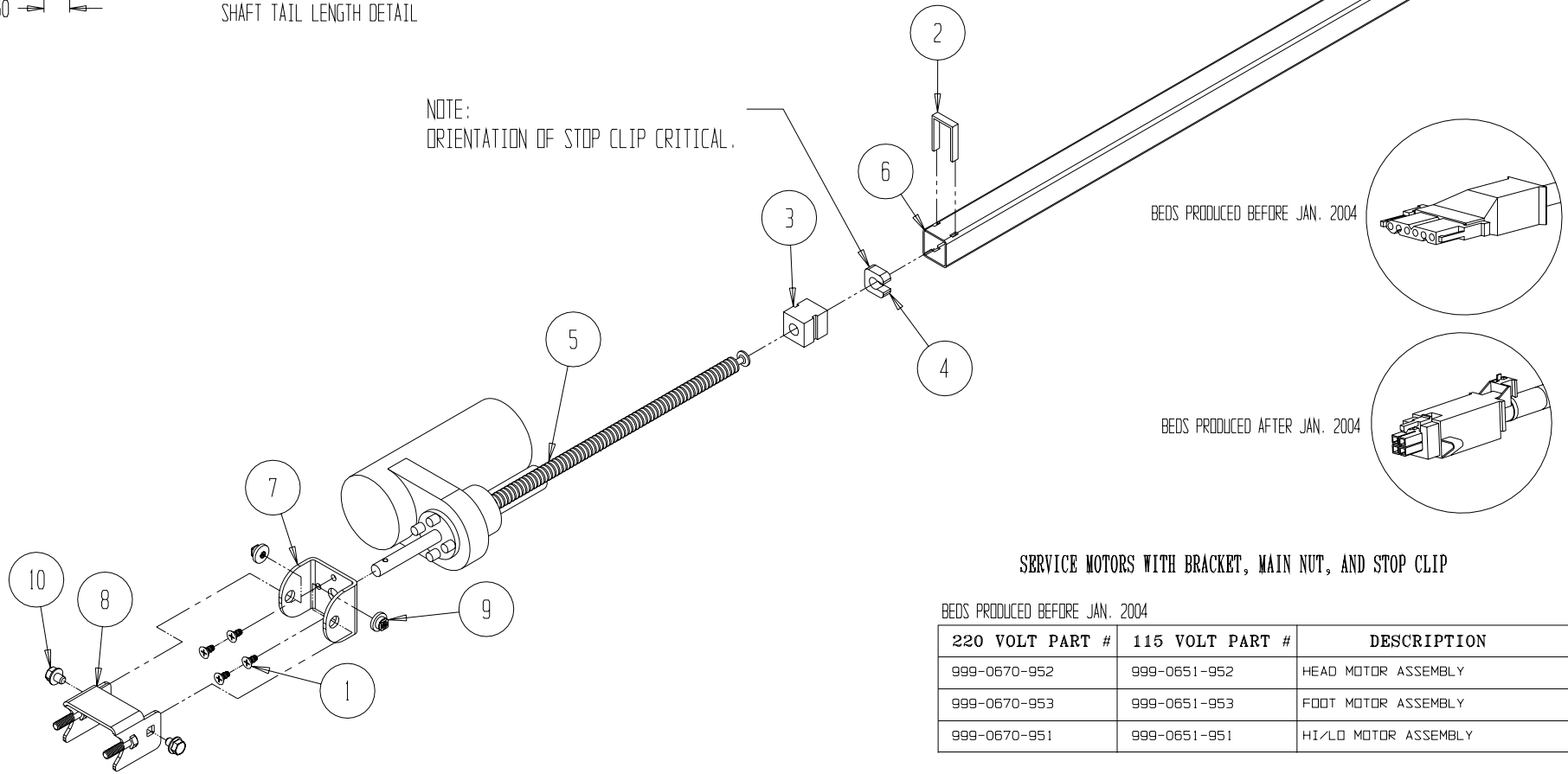
FLEX BED MOTOR ASSEMBLY

ITEM	QTY *	PART NUMBER	DESCRIPTION
10	2	100-5431-002	5/16 – 18 x .375” HWHMS – ZINC
9	2	999-0032-010	SELF WRENCHING NUTS
8	1	999-0651-905T	WELDMENT, ELECTRIC MOTOR MTN. BRKT.
7	1	999-0651-015P	BRACKET, MOTOR MOUNTING – PLATED
6	1	999-0651-010T	TORQUE TUBE, ELECTRIC – TAUPE
5	1	See chart on figure	MOTOR
4	1	999-0301-007	STOP CLIP
3	1	999-0032-090	MAIN NUT – RH
2	1	999-0032-062	RETAINER – NUT
1	4	100-5425-005	¼ -20 x .50” PRHMS – ZINC

*QTY ARE PER MOTOR



NOTE:
ORIENTATION OF STOP CLIP CRITICAL.



BEDS PRODUCED BEFORE JAN. 2004

BEDS PRODUCED AFTER JAN. 2004

SERVICE MOTORS WITH BRACKET, MAIN NUT, AND STOP CLIP

BEDS PRODUCED BEFORE JAN. 2004

220 VOLT PART #	115 VOLT PART #	DESCRIPTION
999-0670-952	999-0651-952	HEAD MOTOR ASSEMBLY
999-0670-953	999-0651-953	FOOT MOTOR ASSEMBLY
999-0670-951	999-0651-951	HI/LO MOTOR ASSEMBLY

BEDS PRODUCED AFTER JAN. 2004

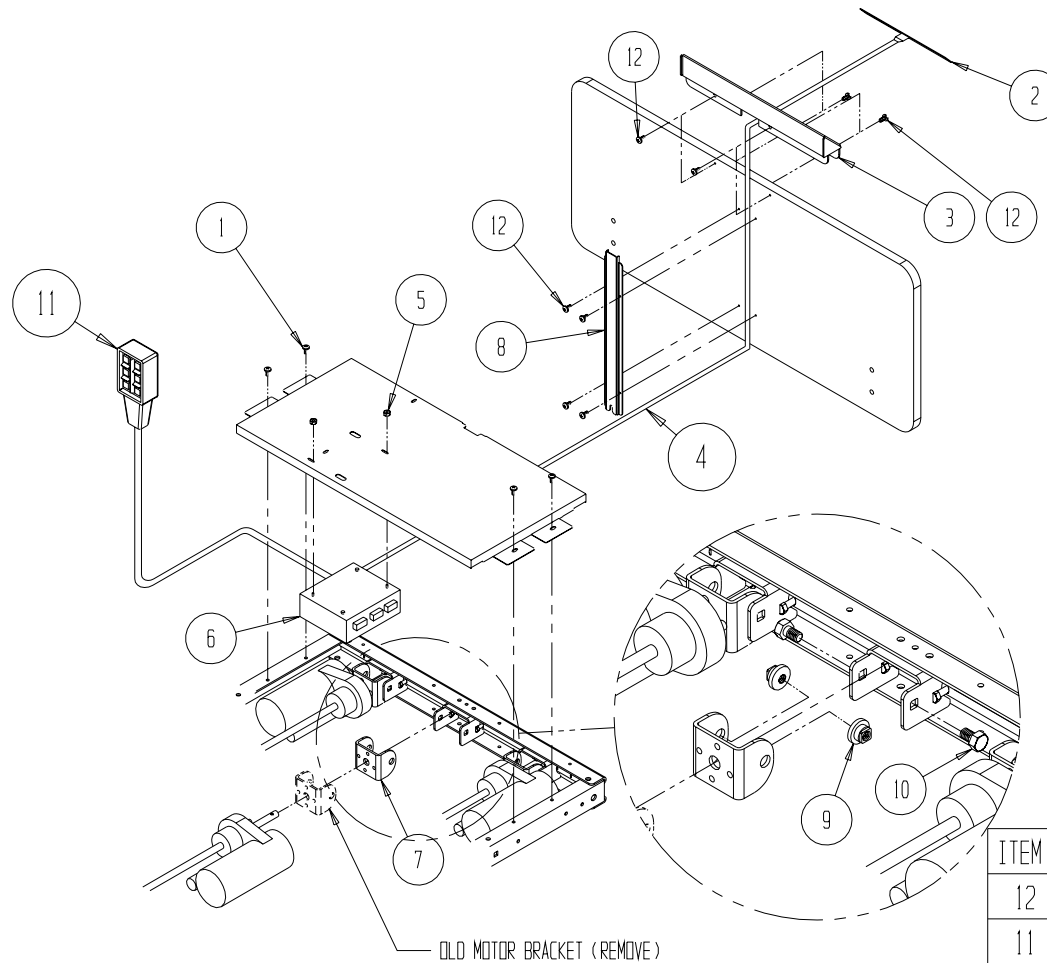
220 VOLT PART #	115 VOLT PART #	DESCRIPTION
999-0752-902	999-0700-902	HEAD MOTOR ASSEMBLY
999-0752-903	999-0700-903	FOOT MOTOR ASSEMBLY
999-0752-901	999-0700-901	HI/LO MOTOR ASSEMBLY

NUT POSITION "A"

BED	HI/LO MOTOR	HEAD MOTOR	FOOT MOTOR
FLEX/SHURPLUS/ASTROLITE	11.50"	5.75"	7.75"

ASSEMBLY INSTRUCTIONS

ALPHA BOX HIGH MOUNT NURSE CONTROL KIT - GEN. 4



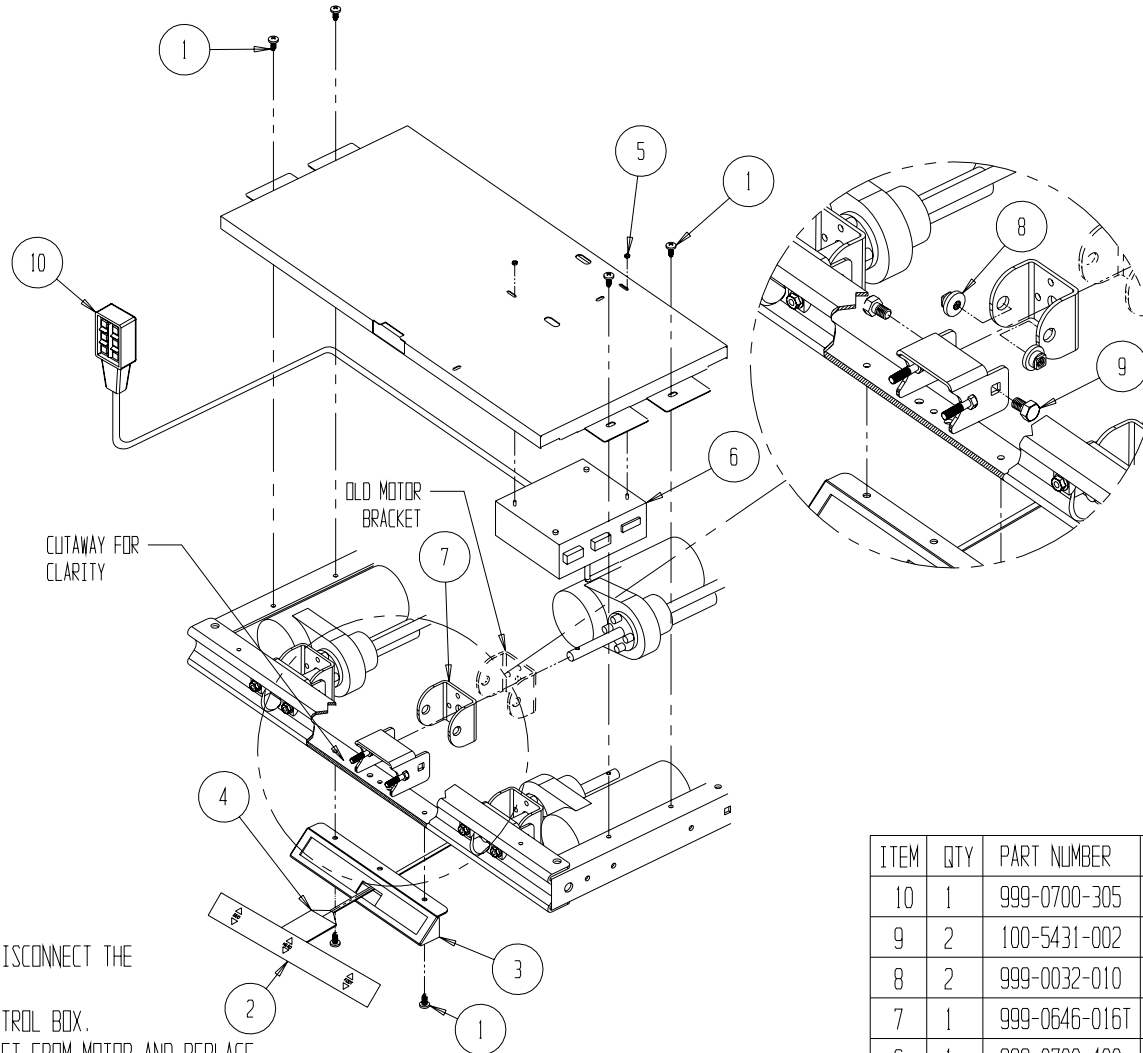
INSTRUCTIONS:

1. UNPLUG THE BED.
2. REMOVE THE MOTOR COVER FROM THE BED AND DISCONNECT THE MOTORS FROM THE OLD J-BOX.
3. REMOVE OLD J-BOX AND ATTACH THE ALPHA BOX.
4. REMOVE HEAD MOTOR, DISCONNECT PLATED MOTOR BRACKET FROM MOTOR, AND REPLACE WITH PAINTED BRACKET. ATTACH WITH NEW MOTOR BRACKET AS SHOWN.
5. RECONNECT THE MOTORS ACCORDING TO LABELS ON J- BOX.
6. REATTACH MOTOR COVER TO FRAME.
7. ATTACH NURSE CONTROL TO FOOTBOARD AS SHOWN.
8. CONNECT NURSE CONTROL SWITCH TO INTERFACE CABLE AS SHOWN ON PAGE 33. CONNECT INTERFACE CABLE TO ALPHA CONTROL BOX.
9. ATTACH THE CHANNEL TO THE FOOT BOARD AS SHOWN.

ITEM	QTY	PART NUMBER	DESCRIPTION
12	8	100-5506-001	# 6 x 1/2 PPHTF - AB - Z1 SCREW
11	1	999-0700-305	HAND CONTROL 6 BUTTON
10	2	100-5431-002	5/16-18 X .375" HWHMS-ZINC
9	2	999-0032-010	SELF WRENCHING NUT
8	1	555-0254-012	CHANNEL
7	1	999-0646-016T	BRK' T, HD MOTOR MOUNT - ALPHA BOX
6	1	999-0700-400	CONTROL BOX, ALPHA, 2601
5	2	100-6706-001	#6-32 NYLOCK NUT
4	1	999-0646-070	INTERFACE CABLE - 34" - 18" BOARDS
3	1	555-0254-902	BEZEL WELDMENT
2	1	555-0254-001	NURSE CONTROL SWITCH
1	4	100-5425-087	1/4-20 X .500 PPH TYPE 23 EXTSEMS

ASSEMBLY INSTRUCTIONS

ALPHA BOX LOW MOUNT NURSE CONTROL KIT- GEN. 4



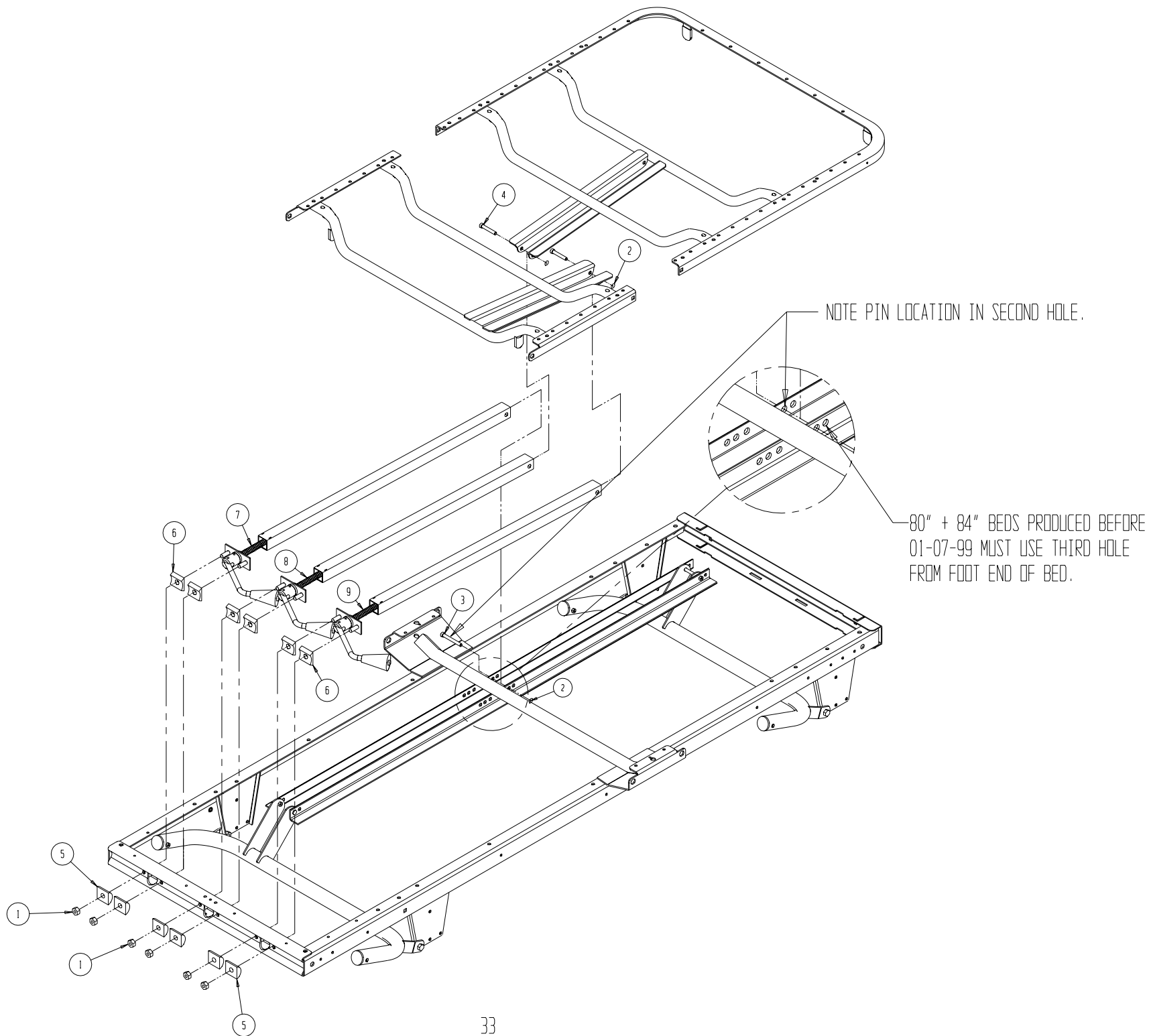
INSTRUCTIONS:

1. UNPLUG THE BED.
2. REMOVE THE MOTOR COVER FROM THE BED AND DISCONNECT THE MOTORS FROM THE OLD J-BOX.
3. REMOVE OLD J-BOX AND ATTACH THE ALPHA CONTROL BOX.
4. REMOVE HEAD MOTOR DISCONNECT PLATED BRACKET FROM MOTOR AND REPLACE WITH PAINTED BRACKET. ATTACH WITH NEW MOTOR BRACKET AS SHOWN.
5. RECONNECT THE MOTORS ACCORDING TO LABELS ON ALPHA CONTROL BOX.
6. REATTACH MOTOR COVER TO FRAME.
7. ATTACH NURSE CONTROL WELDMENT TO FRAME AND CONNECT NURSE CONTROL SWITCH TO INTERFACE CABLE. CONNECT INTERFACE CABLE TO ALPHA CONTROL BOX.

ITEM	QTY	PART NUMBER	DESCRIPTION
10	1	999-0700-305	HAND CONTROL 6 BUTTON
9	2	100-5431-002	5/16-18 X .375" HWMS-ZINC
8	2	999-0032-010	SELF WRENCHING NUT
7	1	999-0646-016T	BRK' T, HD MOTOR MOUNT - ALPHA BOX
6	1	999-0700-400	CONTROL BOX, ALPHA, 2601
5	2	100-6706-001	#6-32 NYLOCK NUT
4	1	999-0646-070	INTERFACE CABLE - 34" - 18" BOARDS
3	1	555-0354-902	BEZEL WELDMENT
2	1	555-0254-001	NURSE CONTROL SWITCH
1	4	100-5425-087	1/4-20 X .500 PPH TYPE 23 EXTSEMS

MANUAL FLEX BED MAINFRAME/DRIVE PACK ASSEMBLY

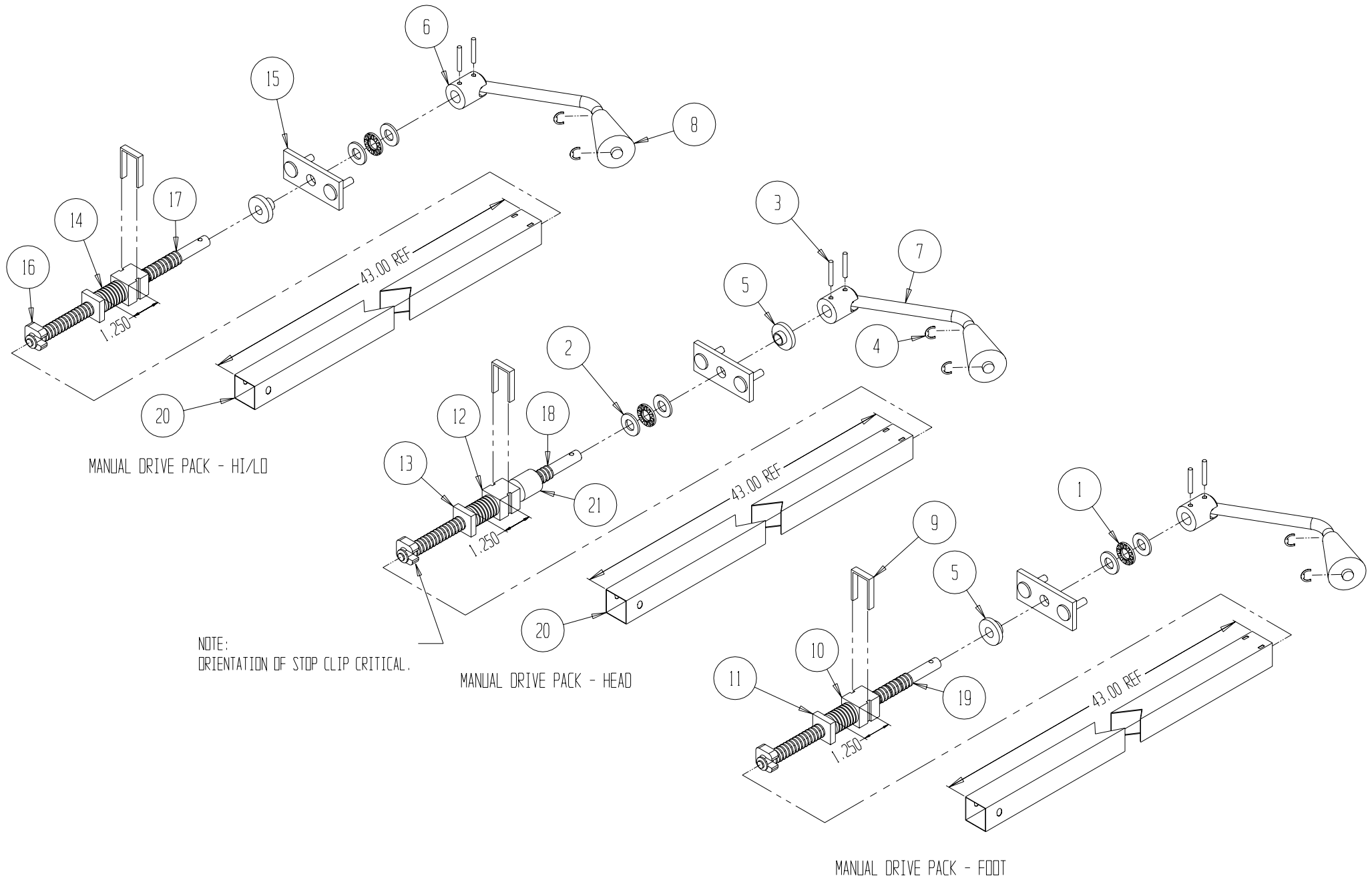
ITEM	QTY	PART NUMBER	DESCRIPTION
9	1	999-0633-953T	MANUAL DRIVE PACK – FOOT
8	1	999-0633-952T	MANUAL DRIVE PACK – HEAD
7	1	999-0633-951T	MANUAL DRIVE PACK – HI/LO
6	6	999-0032-008	FEMALE PIVOT BLOCK
5	6	999-0032-007	MALE PIVOT BLOCK
4	2	100-7938-009	CLEVIS PIN .375" x 2.25 ZINC
3	1	100-7938-001	.375 CLEVIS x 3.0
2	3	100-7518-001	CIRCLE COTTER – 7/16 – ½ SHAFT
1	6	100-6731-001	5/16 – 18 WASHER HD LOCKNUT



FLEX BED MANUAL CRANK ASSEMBLY

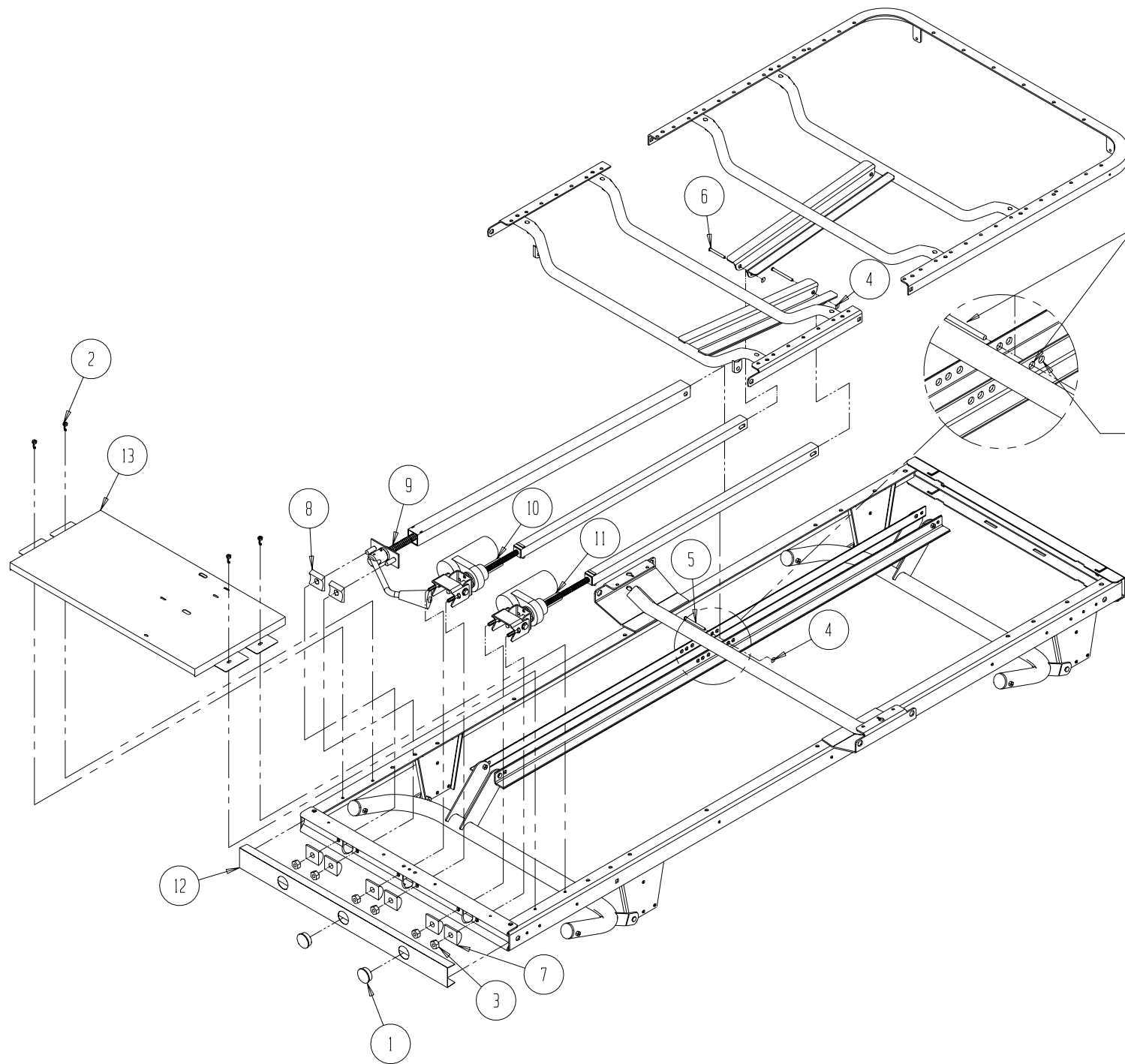
ITEM	QTY *	PART NUMBER	DESCRIPTION
21	1	999-0633-096	STOP COLLAR, 1.75" LONG (HEAD ONLY)
20	1	999-0633-095T	TORQUE TUBE, MANUAL – TAUPE
19	1	999-0633-049	SCREW, MANUAL CRANK – FOOT (FOOT ONLY)
18	1	999-0633-039	SCREW, MANUAL CRANK – HEAD (HEAD ONLY)
17	1	999-0633-029	SCREW, MANUAL CRANK – HI/LO (HI/LO ONLY)
16	1	999-0301-007	STOP CLIP
15	1	999-0032-916	BEARING PLATE ASSEMBLY
14	1	999-0032-094	TORQUE SPRING
13	1	999-0032-093	TORQUE NUT – LH (HEAD ONLY)
12	1	999-0032-092	MAIN NUT – LH (HEAD ONLY)
11	1	999-0032-091	TORQUE NUT – RH
10	1	999-0032-090	MAIN NUT – RH
9	1	999-0032-062	RETAINER, NUT
8	1	999-0032-033	KNOB – CRANK
7	1	999-0032-024	HANDLE
6	1	999-0032-022	HUB
5	1	999-0032-009	SCREW BUSHING
4	2	100-8043-001	E-RING, 7/16" SHAFT
3	2	100-7718-003	ROLL PIN 3/16 DIA. x 1.25 LG
2	2	100-3150-005	BEARING RACE - .093 THK
1	1	100-3150-003	BEARING, THRUST – PRE-LUBED

*QTY ARE PER CRANK ASSEMBLY

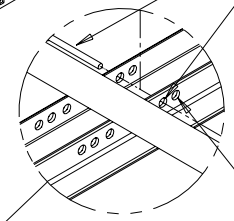


SEMI ELECTRIC FLEX BED MOTOR/MAINFRAME ASSEMBLY

ITEM #	QTY. 76"	PART NUMBER 76"	DESCRIPTION	PART # 80"	QTY. 80#
13	1	999-0651-910T	ASSEMBLY, SEMI ELEC. COVER – TAUPE	999-0651-910T	1
12	1	999-0651-099	NAME PLATE – COMMONIZED	999-0651-099	1
11	1	SEE PAGES 28 & 29	ACTUATOR FOOT "AZ" W/NUT & CLIP	SEE PAGES 28 & 29	1
10	1	SEE PAGES 28 & 29	ACTUATOR HEAD "AW" W/NUT & CLIP	SEE PAGES 28 & 29	1
9	1	999-0651-951T	MANUAL DRIVE PACK – TAUPE	999-0651-951T	1
8	2	999-0032-008	FEMALE PIVOT BLOCK	999-0032-008	2
7	6	999-0032-007	MALE PIVOT BLOCK	999-0032-007	6
6	2	100-7938-009	CLEVIS PIN .375 x 2.25 ZINC	100-7938-009	2
5	1	100-7938-001	.375 CLEVIS PIN x 3.0	100-7938-001	1
4	3	100-7518-001	CIRCLE COTTER – 7/16 – ½ SHAFT	100-7518-001	3
3	6	100-6731-001	5/16 – 18 WASHER HEAD LOCKNUT	100-6731-001	6
2	4	100-5425-087	¼ - 20 x .500 HH TYPE23 EXTSEMS	100-5425-087	4
1	2	100-4713-002	HEYCO 1.375 DIA. HOLE PLUG	100-4713-002	2



NOTE THE PIN LOCATION IN SECOND HOLE.



80" + 84" BEDS MADE BEFORE 01-07-99 MUST USE THIRD HOLE FROM FOOT END BED.

SECTION THREE

INSTRUCTION SHEETS/AVAILABLE ACCESSORIES AND TROUBLE SHOOTING GUIDE

SIDE RAIL INSPECTION PLAN

INSPECTION OF ALL COMPONENTS

1. CHECK COMPONENTS FOR OBVIOUS DAMAGE.
2. CHECK HARDWARE PACKAGE ASSURING ALL HARDWARE IS AVAILABLE FOR ASSEMBLY.

ASSEMBLY INSTRUCTIONS

THREE QUARTER TRIGGER RAIL (554-0706-000)

DWG # 999-0706-015
PAGE 1 OF 2
REV 1 1-6-03

SIDE RAIL ASSEMBLY

1. INSPECT SIDE RAILS FOR STRESS FRACTURES.
2. INSPECT ALL FASTENERS FOR WEAR AND LOOSENESS, REPLACE AND TIGHTEN AS NEEDED.
3. BENT SIDE RAIL SHOULD BE REPLACED IMMEDIATELY.
4. LUBRICATE ALL PIVOT POINTS AS NEEDED.

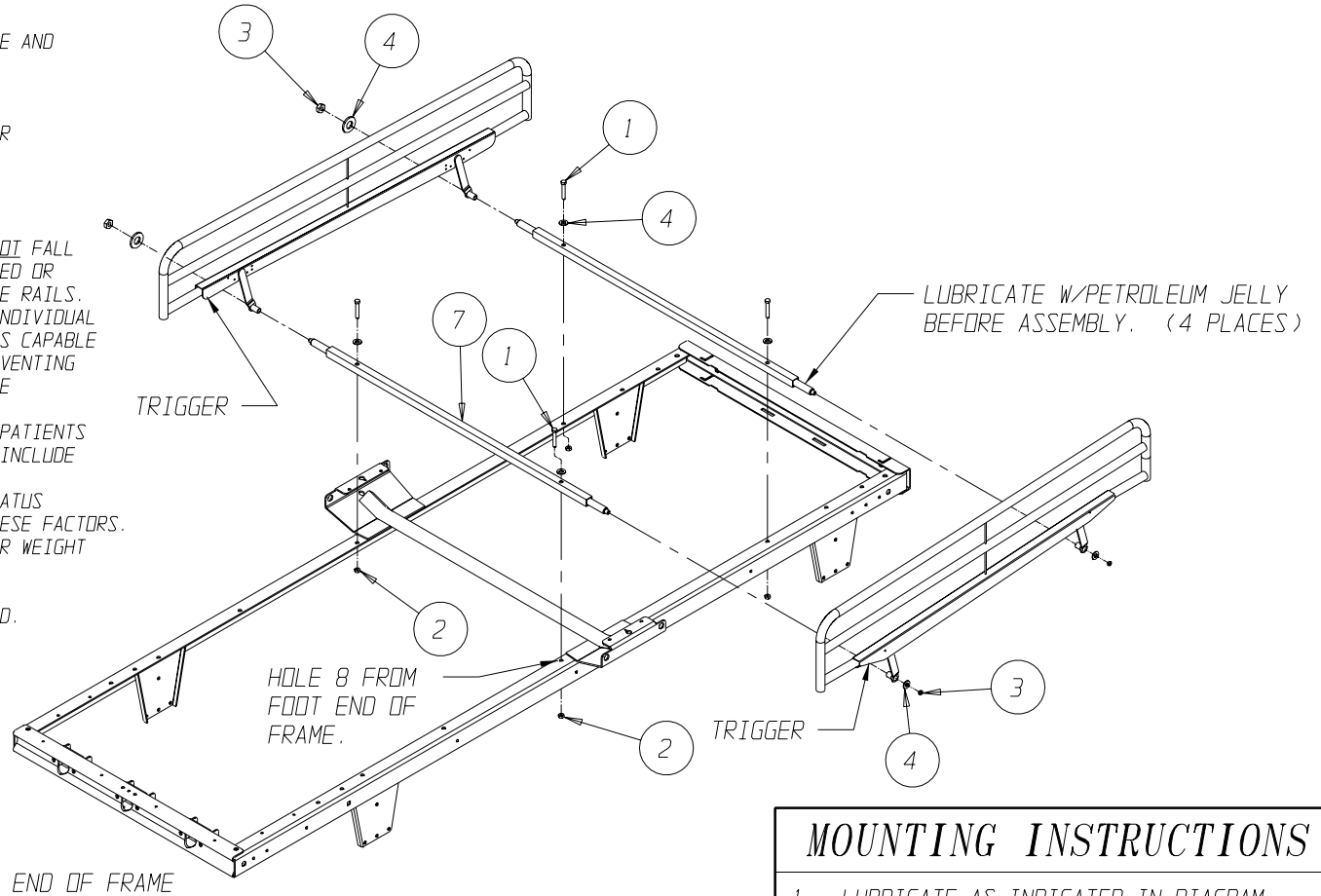
NOTE: CONTACT BASIC AMERICAN METAL PRODUCTS CUSTOMER SERVICE DEPARTMENT FOR TECHNICAL SUPPORT AT (800) 365-2338.

SAFETY SUMMARY

SIDE RAILS, WHEN USED WITH A MANUAL/ELECTRIC BED DO NOT FALL WITHIN ANY WEIGHT LIMITATIONS. SIDE RAILS CAN BE DEFORMED OR BROKEN IF EXCESSIVE SIDE PRESSURE IS EXERTED ON THE SIDE RAILS. THESE SIDE RAILS ARE FOR THE PURPOSE OF PREVENTING AN INDIVIDUAL FROM ROLLING/CLIMBING OUT OF A BED. IF AN INDIVIDUAL IS CAPABLE OF HURTING HIMSELF/HERSELF, AN ALTERNATIVE MEANS OF PREVENTING THE PATIENT FROM ROLLING/CLIMBING OUT OF A BED SHOULD BE INITIATED.

ADDITIONAL SAFETY MEASURES SHOULD BE CONSIDERED FOR PATIENTS IDENTIFIED AS HIGH RISK FOR ENTRAPMENT. SUCH PATIENTS INCLUDE THOSE WITH PRE-EXISTING CONDITIONS SUCH AS CONFUSION, RESTLESSNESS, LACK OF MUSCLE CONTROL, ALTERED MENTAL STATUS (ORGANIC OR MEDICATION RELATED), OR A COMBINATION OF THESE FACTORS. INCREASED RISK ALSO OCCURS WHEN THE PATIENTS SIZE AND OR WEIGHT ARE INAPPROPRIATE FOR THE BED'S DIMENSIONS.

DO NOT USE SIDE RAILS AS PUSH HANDLES FOR MOVING THE BED.



MOUNTING INSTRUCTIONS

- 1 - LUBRICATE AS INDICATED IN DIAGRAM.
- 2 - ATTACH CROSS TUBES (7) TO MAINFRAME BED FRAME ONLY SLEEPING SURFACE REMOVED FOR CLARITY. USING 8TH AND 10TH HOLES AS SHOWN IN DIAGRAM USING HEX HEAD CAP SCREWS (1), NYLOCK NUTS (2), AND WASHER. (SEE DIAGRAM DO NOT TIGHTEN FRAME BRACES TIL END OF ASSEMBLY.)
- 3 - ATTACH RAILS TO CROSS TUBES WITH WASHER (4) AND 3/8-16 LOCKNUT (3) AS SHOWN. (POSITION RAILS SO THAT TRIGGER IS LOCATED TOWARDS FOOT END OF BED.) TIGHTEN ALL BOLTS AND FASTENERS INCLUDING CROSS TUBES.

PARTS LIST			
ITEM	QTY	DESCRIPTION	PART NUMBER
1	4	5/16-18 X 1.5" HHMS-FULL THD	100-5431-003
2	4	5/16-18 NYLON LOCKNUT-THIN	100-6731-006
3	4	3/8-16 NYLON JAM LOCKNUT	100-6738-003
4	8	5/16 STD STL FLAT WASHER-ZINC	100-8431-011
5	1	RAIL ASSEMBLY, 1/2 RIGHT	999-0706-907T
6	1	RAIL ASSEMBLY, 1/2 LEFT	999-0706-908T
7	2	WELDMENT, CROSS TUBE	999-0636-970T

SIDE RAIL INSPECTION PLAN

INSPECTION OF ALL COMPONENTS

1. CHECK COMPONENTS FOR OBVIOUS DAMAGE.
2. CHECK HARDWARE PACKAGE ASSURING ALL HARDWARE IS AVAILABLE FOR ASSEMBLY.

SIDE RAIL ASSEMBLY

1. INSPECT SIDE RAILS FOR STRESS FRACTURES.
2. INSPECT ALL FASTENERS FOR WEAR AND LOOSENESS, REPLACE AND TIGHTEN AS NEEDED.
3. BENT SIDE RAIL SHOULD BE REPLACED IMMEDIATELY.
4. LUBRICATE ALL PIVOT POINTS AS NEEDED.

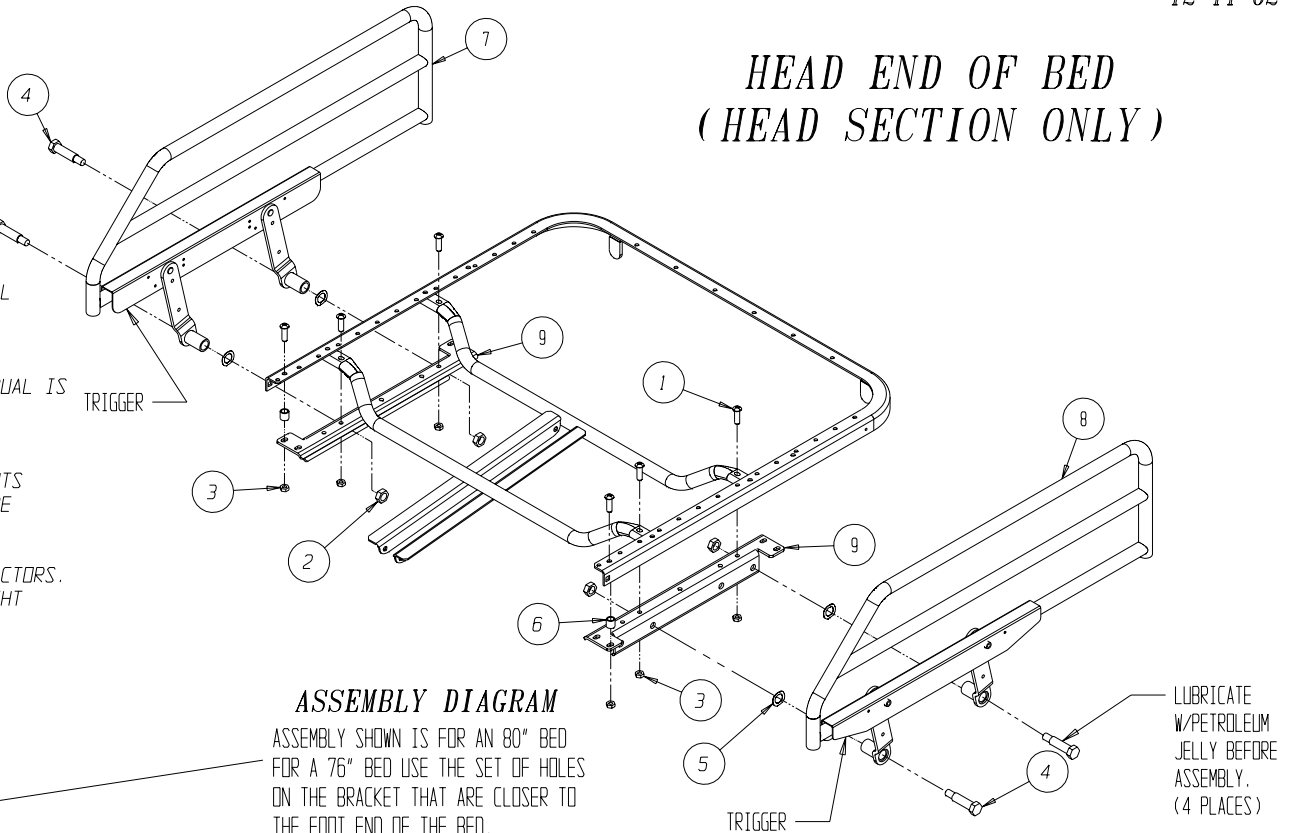
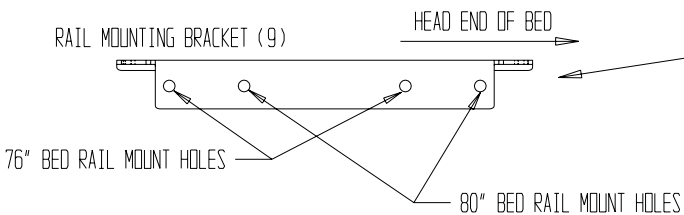
NOTE: CONTACT BASIC AMERICAN METAL PRODUCTS CUSTOMER SERVICE DEPARTMENT FOR TECHNICAL SUPPORT AT (800) 365-2338.

SAFETY SUMMARY

SIDE RAILS, WHEN USED WITH A MANUAL/ELECTRIC BED DO NOT FALL WITHIN ANY WEIGHT LIMITATIONS. SIDE RAILS CAN BE DEFORMED OR BROKEN IF EXCESSIVE SIDE PRESSURE IS EXERTED ON THE SIDE RAILS. THESE SIDE RAILS ARE FOR THE PURPOSE OF PREVENTING AN INDIVIDUAL FROM ROLLING/CLIMBING OUT OF A BED. IF AN INDIVIDUAL IS CAPABLE OF HURTING HIMSELF/HERSELF, AN ALTERNATIVE MEANS OF PREVENTING THE PATIENT FROM ROLLING/CLIMBING OUT OF A BED SHOULD BE INITIATED.

ADDITIONAL SAFETY MEASURES SHOULD BE CONSIDERED FOR PATIENTS IDENTIFIED AS HIGH RISK FOR ENTRAPMENT. SUCH PATIENTS INCLUDE THOSE WITH PRE-EXISTING CONDITIONS SUCH AS CONFUSION, RESTLESSNESS, LACK OF MUSCLE CONTROL, ALTERED MENTAL STATUS (ORGANIC OR MEDICATION RELATED), OR A COMBINATION OF THESE FACTORS. INCREASED RISK ALSO OCCURS WHEN THE PATIENT'S SIZE AND OR WEIGHT ARE INAPPROPRIATE FOR THE BED'S DIMENSIONS.

DO NOT USE SIDE RAILS AS PUSH HANDLES FOR MOVING THE BED.



ASSEMBLY DIAGRAM

ASSEMBLY SHOWN IS FOR AN 80" BED FOR A 76" BED USE THE SET OF HOLES ON THE BRACKET THAT ARE CLOSER TO THE FOOT END OF THE BED.

ASSEMBLY INSTRUCTIONS

HALF HEAD TRIGGER RAIL (554-0704-000)

DWG # - 999-0704-015
REV. 1
12-11-02

HEAD END OF BED (HEAD SECTION ONLY)

MOUNTING INSTRUCTIONS

- 1 - LUBRICATE AS INDICATED IN DIAGRAM.
- 2 - SECURE ONE RAIL BRACKET (9) TO INSIDE EDGE OF HEAD WING USING HEX HEAD CAP SCREWS (1), NYLOCK NUTS (3) AND SPACER (6). NOTE THE MOUNTING HOLES THAT ARE USED. (SEE DIAGRAM)
- 3 - ATTACH RAIL USING SHOULDER BOLT (4) WAVE WASHER (5) AND NYLOCK NUT (2). (POSITION RAIL SO THAT TRIGGER IS LOCATED TOWARDS FOOT END OF BED.) USE THE PROPER BRACKET HOLES FOR YOUR (76" OR 80") BED. TIGHTEN BOLT.
- 4 - FOLLOW STEPS 1, 2 AND 3 FOR THE OTHER RAIL.

PARTS LIST			
ITEM	QTY	DESCRIPTION	PART NUMBER
1	6	5/16-18 1.25 BUTTON HD SCREW	100-5431-016
2	4	1/2-13 NYLOCK NUT	100-6750-005
3	6	5/16-18 NYLON LOCKNUT THIN (.25)	100-6731-006
4	4	SHOULDER BOLT- RAIL MOUNTING	999-0637-100
5	4	WAVE WASHER	555-1000-122
6	2	1/2 ID 5/8 OD SPACER X 0.625" LONG	999-0637-105
7	1	RAIL ASSEMBLY, 1/2 RIGHT	999-0704-907T
8	1	RAIL ASSEMBLY, 1/2 LEFT	999-0704-908T
9	2	BRACKET, 1/2 RAIL MTG.	999-0704-006T

SIDE RAIL INSPECTION PLAN

INSPECTION OF ALL COMPONENTS

1. CHECK COMPONENTS FOR OBVIOUS DAMAGE.
2. CHECK HARDWARE PACKAGE ASSURING ALL HARDWARE IS AVAILABLE FOR ASSEMBLY.

ASSEMBLY INSTRUCTIONS

HALF FOOT TRIGGER RAIL (554-0705-000)

DWG # 999-0705-015
01-06-03 REV. 1
SHEET 2 OF 2

SIDE RAIL ASSEMBLY

1. INSPECT SIDE RAILS FOR STRESS FRACTURES.
2. INSPECT ALL FASTENERS FOR WEAR AND LOOSENESS, REPLACE AND TIGHTEN AS NEEDED.
3. BENT SIDE RAIL SHOULD BE REPLACED IMMEDIATELY.
4. LUBRICATE ALL PIVOT POINTS AS NEEDED.

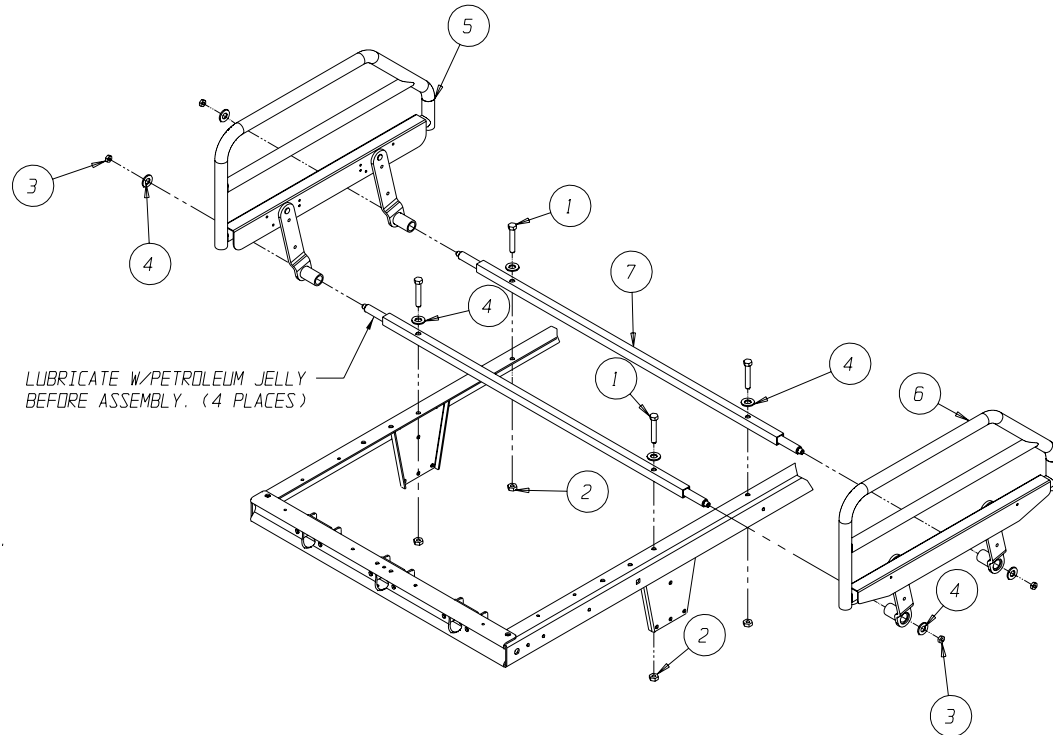
NOTE: CONTACT BASIC AMERICAN METAL PRODUCTS CUSTOMER SERVICE DEPARTMENT FOR TECHNICAL SUPPORT AT (800) 365-2338.

SAFETY SUMMARY

SIDE RAILS, WHEN USED WITH A MANUAL/ELECTRIC BED DO NOT FALL WITHIN ANY WEIGHT LIMITATIONS. SIDE RAILS CAN BE DEFORMED OR BROKEN IF EXCESSIVE SIDE PRESSURE IS EXERTED ON THE SIDE RAILS. THESE SIDE RAILS ARE FOR THE PURPOSE OF PREVENTING AN INDIVIDUAL FROM ROLLING/CLIMBING OUT OF A BED. IF AN INDIVIDUAL IS CAPABLE OF HURTING HIMSELF/HERSELF, AN ALTERNATIVE MEANS OF PREVENTING THE PATIENT FROM ROLLING/CLIMBING OUT OF A BED SHOULD BE INITIATED.

ADDITIONAL SAFETY MEASURES SHOULD BE CONSIDERED FOR PATIENTS IDENTIFIED AS HIGH RISK FOR ENTRAPMENT. SUCH PATIENTS INCLUDE THOSE WITH PRE-EXISTING CONDITIONS SUCH AS CONFUSION, RESTLESSNESS, LACK OF MUSCLE CONTROL, ALTERED MENTAL STATUS (ORGANIC OR MEDICATION RELATED), OR A COMBINATION OF THESE FACTORS. INCREASED RISK ALSO OCCURS WHEN THE PATIENTS SIZE AND OR WEIGHT ARE INAPPROPRIATE FOR THE BED'S DIMENSIONS.

DO NOT USE SIDE RAILS AS PUSH HANDLES FOR MOVING THE BED.



LUBRICATE W/PETROLEUM JELLY BEFORE ASSEMBLY. (4 PLACES)

ASSEMBLY DIAGRAM

PARTS LIST

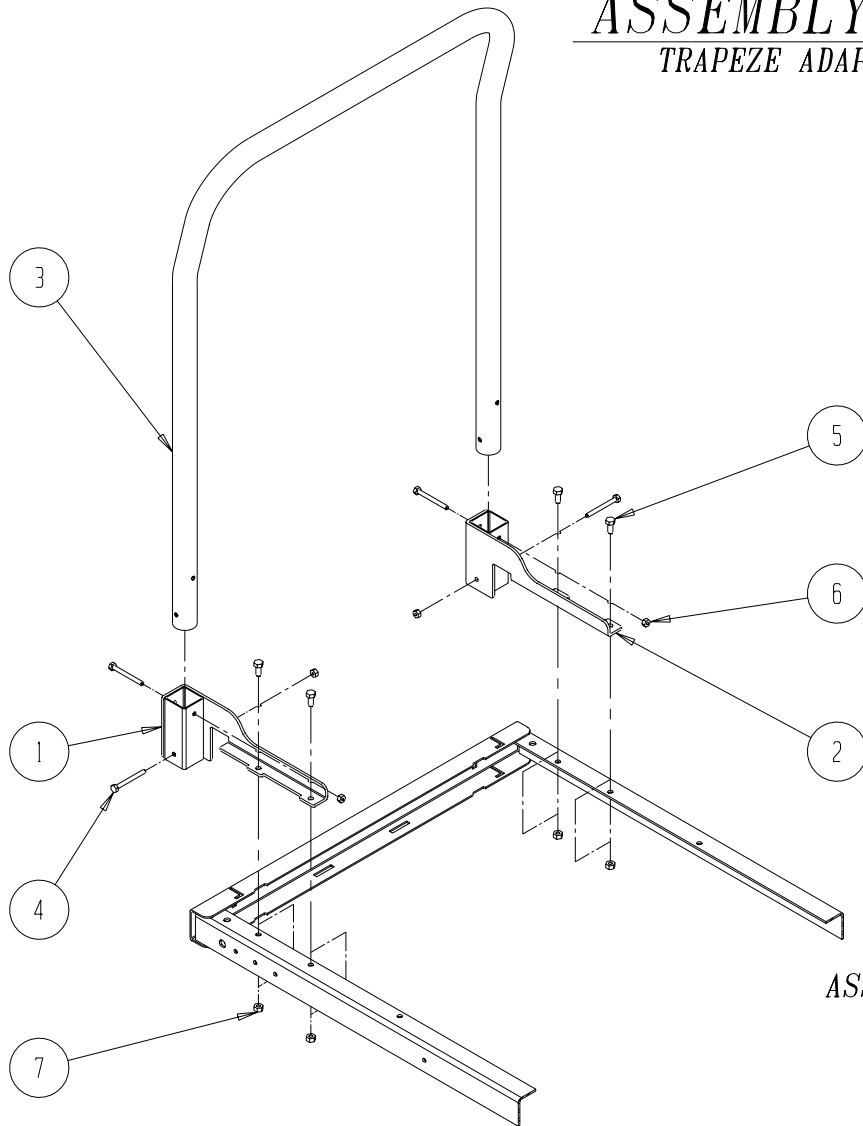
ITEM	QTY	DESCRIPTION	PART NUMBER
1	4	5/16-18 X 1.5" HHMS-FULL THD	100-5431-003
2	4	5/16-18 NYLON LOCKNUT-THIN	100-6731-006
3	4	3/8-16 NYLON JAM LOCKNUT	100-6738-003
4	8	5/16 STD STL FLAT WASHER-ZINC	100-8431-011
5	1	RAIL ASSEMBLY, 1/2 RIGHT	999-0705-907
6	1	RAIL ASSEMBLY, 1/2 LEFT	999-0705-908
7	2	WELDMENT, CROSS TUBE	999-0636-970T

MOUNTING INSTRUCTIONS

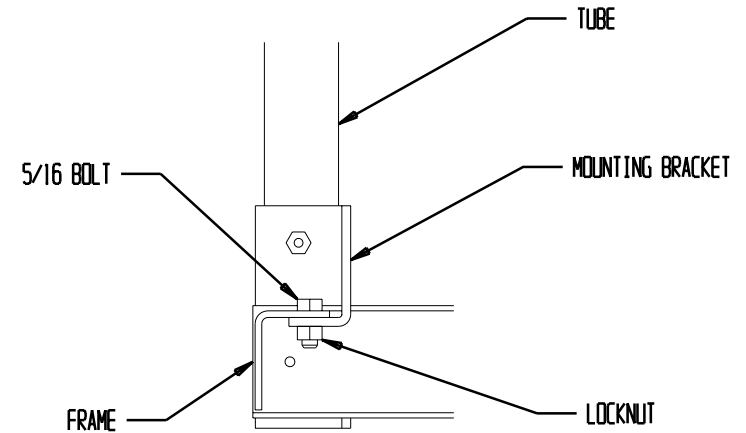
- 1 - LUBRICATE AS INDICATED IN DIAGRAM.
- 2 - ATTACH FRAME BRACES TO FOOT END OF FRAME USING 6TH AND 7TH HOLES AS SHOWN IN DIAGRAM USING HEX HEAD CAP SCREWS, NYLOCK NUTS, AND WASHER. (SEE DIAGRAM. DO NOT TIGHTEN FRAME BRACES TIL END OF ASSEMBLY.)
- 3 - ATTACH RAILS TO FRAME BRACES WITH WASHER AND 3/8-16 NYLON JAM LOCKNUT AS SHOWN. (POSITION RAILS SO THAT TRIGGER IS LOCATED TOWARDS FOOT END OF BED.) TIGHTEN ALL BOLTS AND FASTNERS INCLUDING FRAME BRACES.

ASSEMBLY INSTRUCTIONS

TRAPEZE ADAPTOR (554-0639-000)



ASSEMBLY DIAGRAM



MOUNTING INSTRUCTIONS

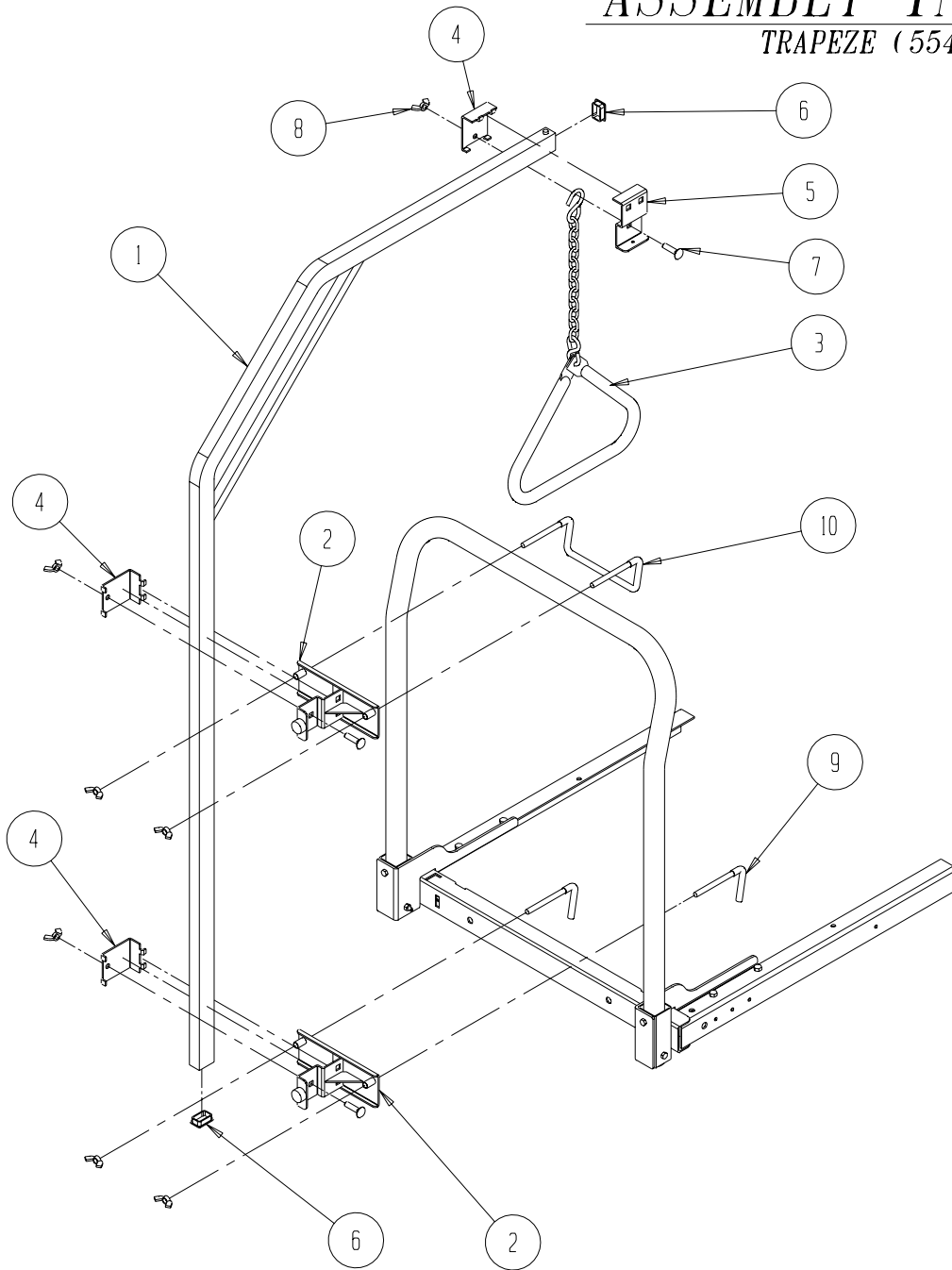
- 1 - ATTACH TUBE (3) TO MOUNTING BRACKETS (1 & 2) WITH THE FOUR 1/4 INCH BOLTS AND MATCHING LOCKNUTS.
- 2 - RAISE THE HEAD OF THE BED TO ITS HIGHEST POSITION.
- 3 - LOWER TRAPEZE ADAPTOR INTO THE FRAME OF THE BED, SO THAT THE FLAPS ON THE MOUNTING BRACKETS ARE UNDER THE FRAME (SEE DIAGRAM).
- 4 - ALIGN THE HOLES ON THE FRAME WITH THE HOLES ON THE MOUNTING BRACKETS, AND ATTACH WITH THE FOUR 5/16 INCH BOLTS AND MATCHING LOCKNUTS.

PARTS LIST

ITEM	QTY	DESCRIPTION	(PART #)
1	1	MOUNTING BRKT-RH	(999-0639-901)
2	1	MOUNTING BRKT-LH	(999-0639-902)
3	1	TUBE-30" TRAPEZE	(999-0639-003)
4	4	1/4-20 X 2.50 HHMS	(100-5425-059)
5	4	5/16-18 X .75 HHMS	(100-5431-008)
6	4	1/4-20 LOCKNUT	(100-6725-002)
7	4	5/16-18 LOCKNUT	(100-6731-002)

ASSEMBLY INSTRUCTIONS

TRAPEZE (554-0143-000)



ASSEMBLY DIAGRAM

MOUNTING INSTRUCTIONS

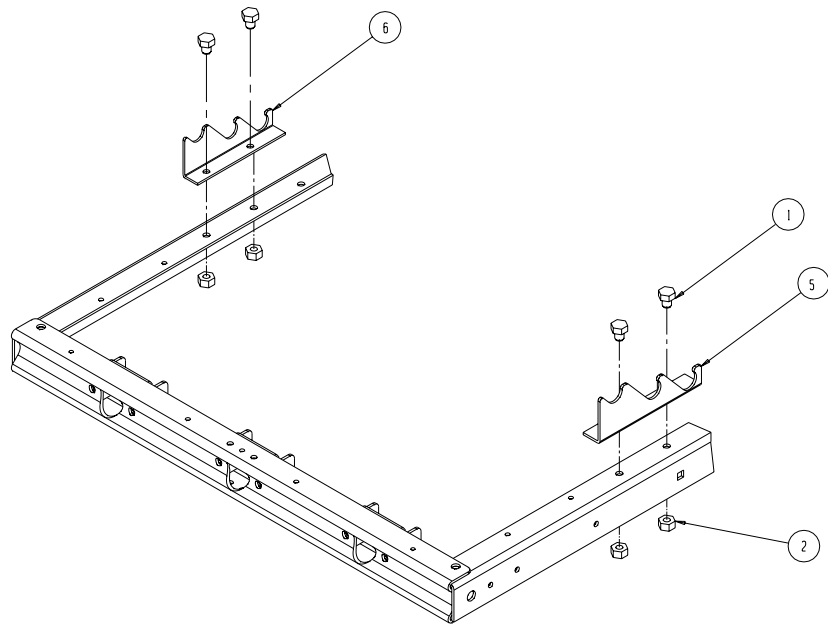
- 1 - ATTACH THE TWO TRAPEZE SUPPORT PLATE ASSEMBLIES (2) TO THE TRAPEZE SUB ASSEMBLY (1) WITH THE TRAPEZE CLAMPS (4), CARRIAGE BOLT (7) AND WING NUT (8). KEEP THE UPPER PLATE LOOSE SO THAT IT CAN BE ADJUSTED TO THE ADAPTER.
- 2 - PUT THE TWO LOWER CLAMP RODS (9) THROUGH THE HOLES ON THE LOWER SUPPORT PLATE ASSEMBLY (2). THEN SET THE CLAMP RODS ONTO THE HEAD END OF THE FRAME. CENTER THE SUPPORT PLATE ASSEMBLY AND TIGHTEN THE CLAMP RODS WITH TWO OF THE WING NUTS (8).
- 3 - PUT THE UPPER CLAMP ROD (10) THROUGH THE UPPER SUPPORT PLATE ASSEMBLY (2). THEN SET THE UPPER CLAMP ROD ON THE MAIN TUBE OF THE TRAPEZE ADAPTER. TIGHTEN THE UPPER CLAMP ROD USING TWO WING NUTS (8). ALSO TIGHTEN THE SUPPORT PLATE ASSEMBLY
- 4 - PUT THE REMAINING MALE AND FEMALE TRAPEZE CLAMPS (4 & 5) ONTO THE TRAPEZE SUB ASSEMBLY (1). TAKE THE REMAINING CARRIAGE BOLT (7) AND PUT IT THROUGH THE FEMALE TRAPEZE CLAMP. THEN PUT IT THROUGH THE HOOK AT THE END OF THE CHAIN ON THE TRIANGLE ASSEMBLY (3) AND FINALLY THROUGH THE MALE TRAPEZE CLAMP (4). THEN TIGHTEN USING THE LAST WING NUT (8).

PARTS LIST

ITEM	QTY	DESCRIPTION	(PART #)
1	1	TRAPEZE SUB ASSEMBLY	(999-0143-901)
2	2	TRAPEZE SUPPORT PLATE ASSY	(999-0143-902)
3	1	TRIANGLE ASSEMBLY	(999-0143-903)
4	3	TRAPEZE CLAMP (MALE)	(999-0143-001)
5	1	TRAPEZE CLAMP (FEMALE)	(999-0143-002)
6	2	END CAP	(794-0001-004)
7	3	3/8-16 X 1.50 CARRIAGE BOLT	(100-5238-001)
8	7	3/8-16 UNC WING NUT	(100-6938-001)
9	2	LOWER TRAPEZE CLAMP ROD	(999-0143-005)
10	1	UPPER TRAPEZE CLAMP ROD	(999-0143-006)

ASSEMBLY INSTRUCTIONS

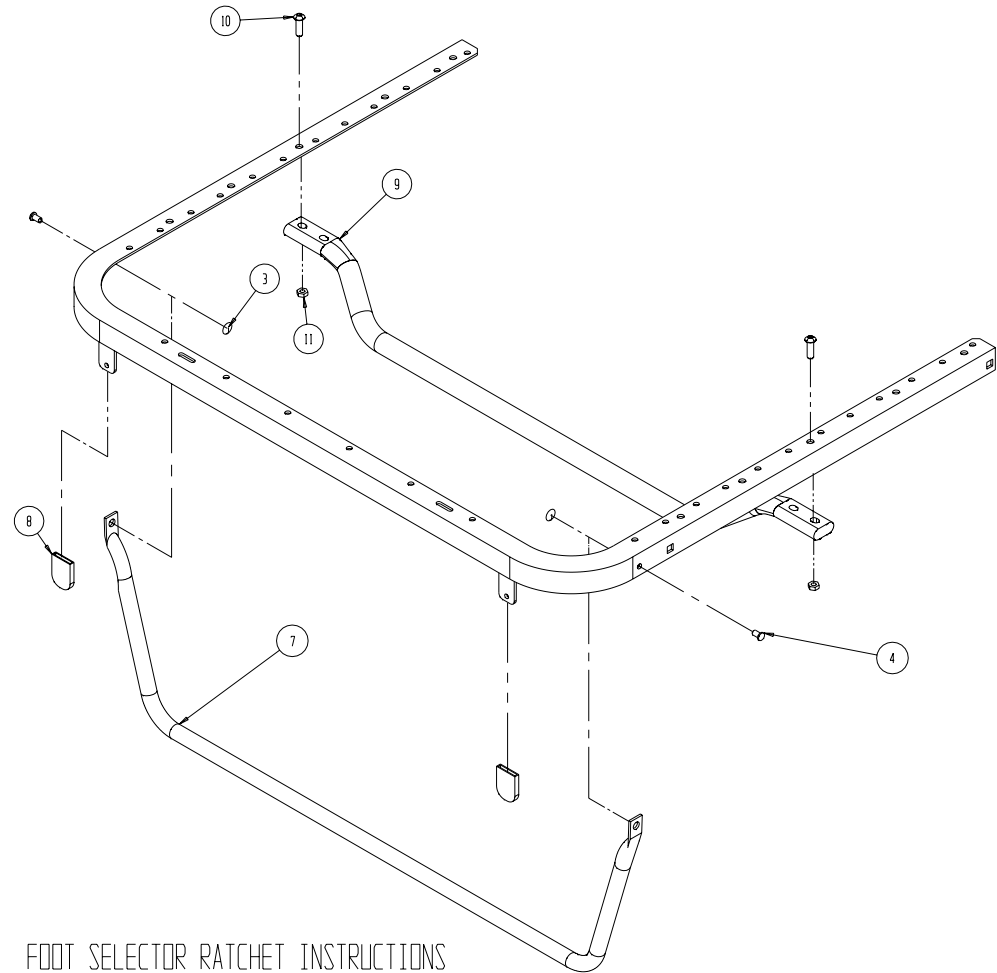
FOOT SECTION RATCHET KIT, 554-0658-000



ASSEMBLY INSTRUCTIONS FOOT SELECTOR RATCHET

PARTS LIST

ITEM	QTY	PART NUMBER	DESCRIPTION
1	4	100-5431-017	5/16-18 X 5/8 HHMS - ZINC
2	4	100-6731-002	5/16 NYLON LOCKNUT
3	2	100-7518-001	CIRCLE COTTER - 7/16 - 1/2 SHAFT
4	2	100-7925-001	CLEVIS PIN .25 X .5 ZINC
5	1	999-0658-019T	BRACKET, FOOT END RATCHET (LH)
6	1	999-0658-020T	BRACKET, FOOT END RATCHET (RH)
7	1	999-0658-021T	TUBE, FOOT RATCHET SELECT - TAUPE
8	2	100-4618-001	.125 X 1.00 X .812 CAP-BLACK
9	1	999-0633-021T	SLEEPING SURFACE CROSS BRACE
10	2	100-5431-016	5/16-18 1.25 BUTTON HEAD CAP SCREW
11	2	100-6731-006	5/16-18 NYLON LOCKNUT THIN (.25)

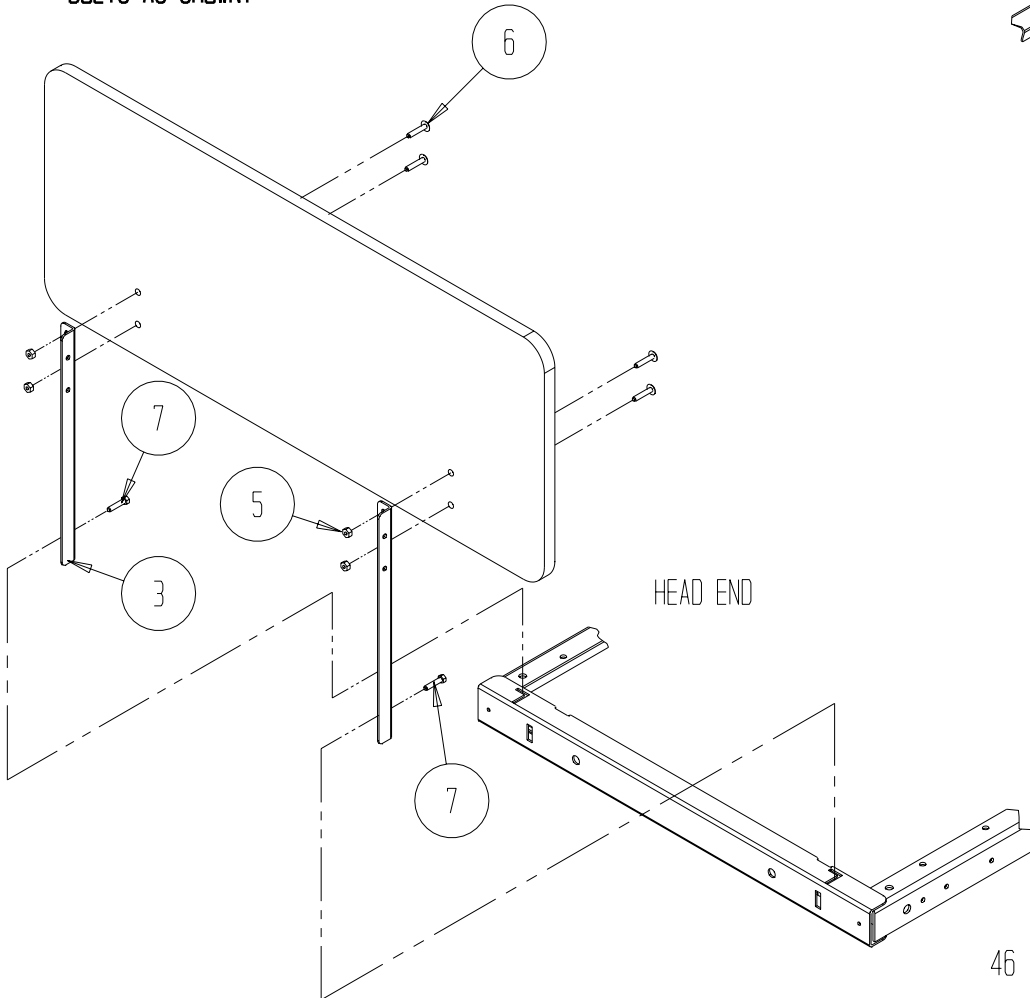


FOOT SELECTOR RATCHET INSTRUCTIONS

1. ATTACH 999-0658-019T, 020T RH AND LH FOOT RATCHET BRACKETS TO FOOT END OF BED RESPECTIVELY WITH HEX HEAD MACHINE SCREWS AND AND LOCKNUTS AS SHOWN IN DIAGRAM.
2. ATTACH 999-0658-021T TUBE TO FOOT WING OF BED USING CIRCLE COTTERS AND CLEVIS PINS AS SHOWN.
3. ATTACH 999-0633-021T TUBE TO FOOT WING OF BED USING BUTTON CAP SCREW AND LOCKNUTS.

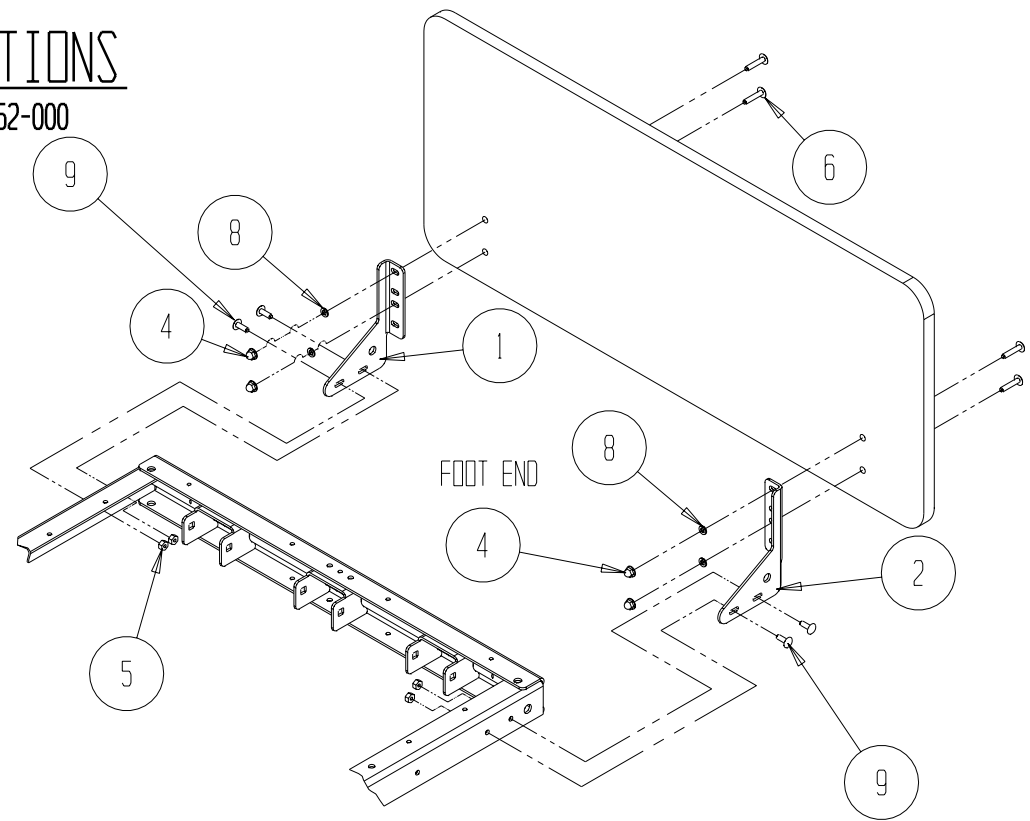
HEAD AND FOOT BOARD INSTRUCTIONS

1. ATTACH 999-0652-001,002 BRACKETS TO FOOT BOARD AS SHOWN USING SLOTS INDICATED IN DIAGRAM
2. ATTACH BRACKETS TO FOOT END OF MAINFRAME AS SHOWN.
3. ATTACH 999-0145-002 BRACKETS TO HEAD BOARD AS SHOWN.
4. SLIDE HEAD BOARD ASSEMBLY INTO "L" SLOTS ON HEAD END OF MAINFRAME AS SHOWN.
5. SECURE HEAD BOARD WITH 100-5425-021 BOLTS AS SHOWN.



ASSEMBLY INSTRUCTIONS

FIXED PLACE PANEL MOUNTS 554-0652-000



ASSEMBLY INSTRUCTIONS

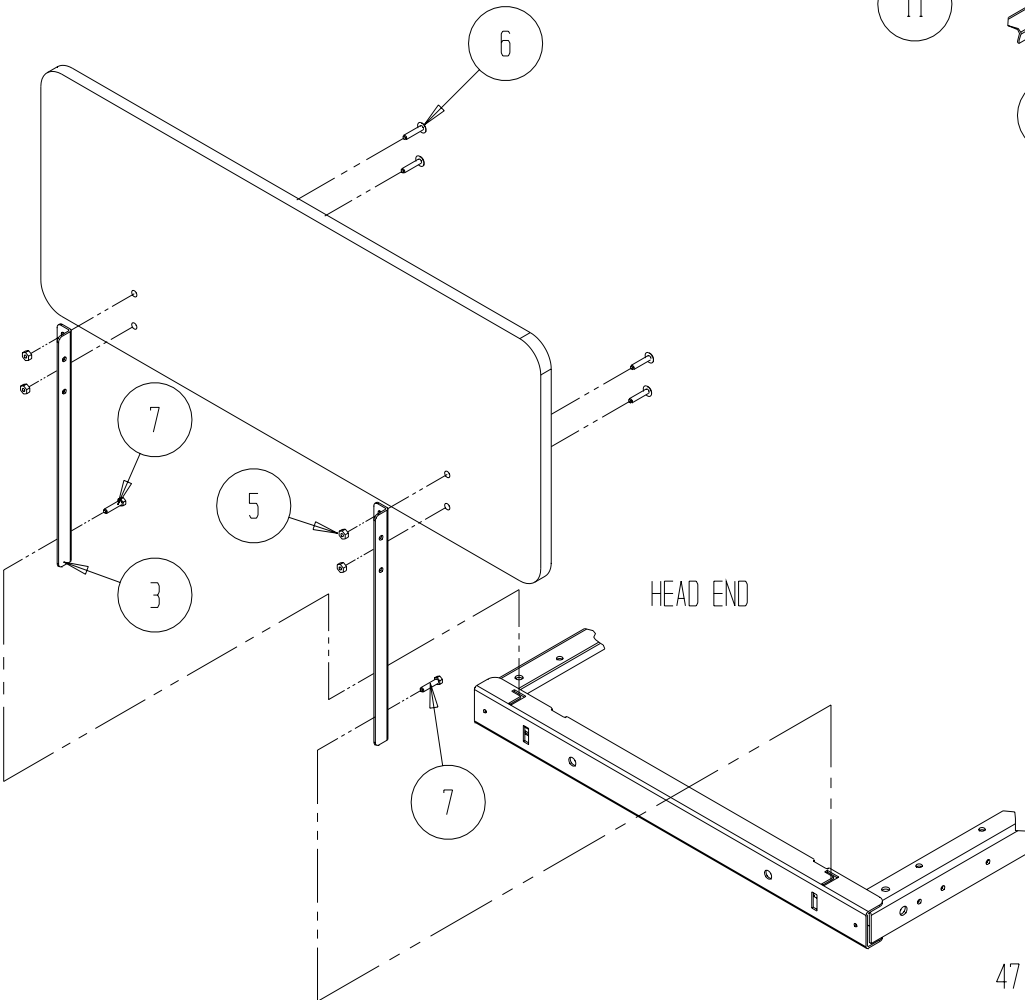
HEAD AND FOOT BOARD

PARTS LIST

9	4	100-5225-009	1/4-20 X 3/4 LG. CARRIAGE BOLTS
8	4	100-8525-001	1/4 LOCK WASHERS
7	2	100-5431-003	5/16 - 18 x 1.5" HHMS - FULL THREAD
6	8	100-5225-002	1/4-20 X 1 1/4 LG. CARRIAGE BOLTS
5	8	100-6625-002	1/4-20 HEX NUTS
4	4	100-6525-001	1/4-20 ACORN NUTS
3	2	999-0145-002T	L/H HEAD BRACKET
2	1	999-0652-002T	L/H FOOT BRACKET
1	1	999-0652-001T	R/H FOOT BRACKET

HEAD AND FOOT BOARD INSTRUCTIONS

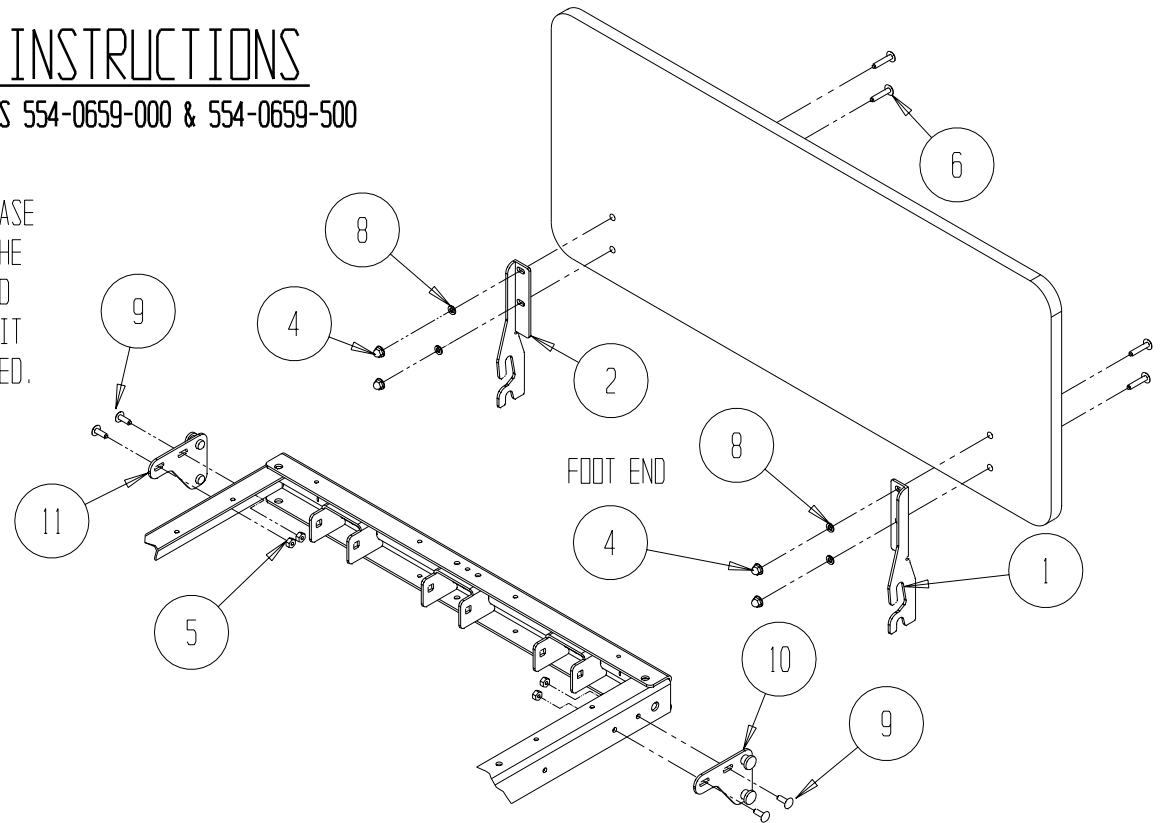
1. ATTACH 999-0659-033T, 034T BRACKETS TO FOOT BOARD AS SHOWN USING SLOTS INDICATED IN DIAGRAM
2. ATTACH 999-0659-031T, 032T TO FOOT END OF MAINFRAME AS SHOWN.
3. ATTACH FOOT BOARD TO FRAME MOUNTS ON FOOT END OF BED.
4. ATTACH 999-0145-002T BRACKETS TO HEAD BOARD AS SHOWN.
5. ATTACH HEAD BOARD TO HEAD END OF MAINFRAME AS SHOWN.



ASSEMBLY INSTRUCTIONS

REMOVABLE PANEL MOUNTS 554-0659-000 & 554-0659-500

NOTE: FOR THE NON-STANDARD QUICK RELEASE PANEL MTG KIT USE THE HARDWARE AS REQUIRED FROM THE STANDARD KIT PROVIDED WITH THE BED.



ASSEMBLY INSTRUCTIONS

HEAD AND FOOT BOARD

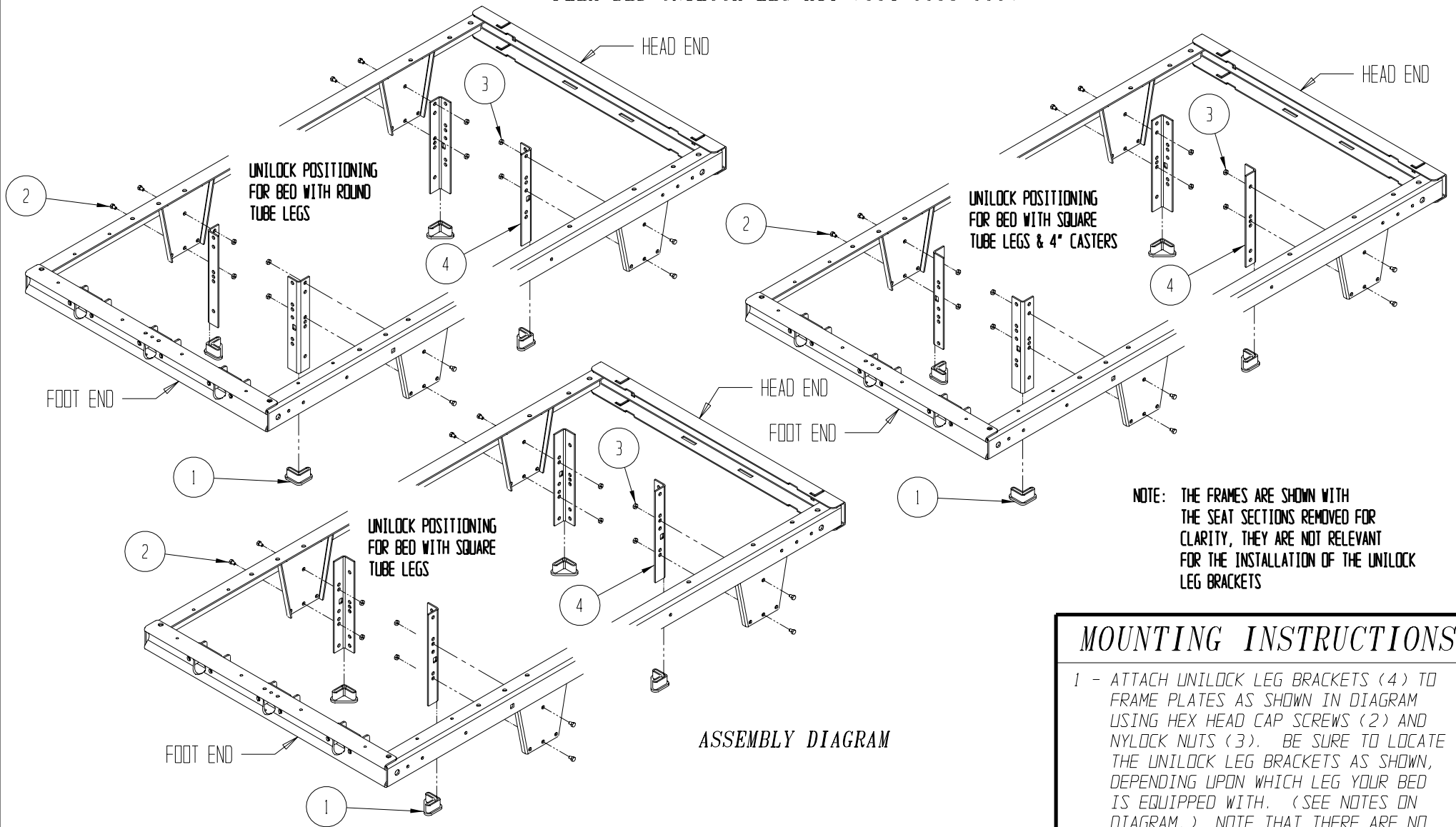
PARTS LIST

11	1	999-0659-032T	BRKT, QK REL FRAME MNT - RH - TAUPE
10	1	999-0659-031T	BRKT, QK REL FRAME MNT. - LH - TAUPE
9	4	100-5225-009	1/4-20 X 3/4 LG. CARRIAGE BOLTS
8	4	100-8525-001	1/4 LOCK WASHERS
7	2	100-5431-003	5/16-18 X 1.5" HHMS-FULL THREAD
6	8	100-5225-002	1/4-20 X 1 1/4 LG. CARRIAGE BOLTS
5	8	100-6625-002	1/4-20 HEX NUTS
4	4	100-6525-001	1/4-20 ACORN NUTS-HEX CAP
3	2	999-0145-002T	L/H HEAD BRACKET
2	1	999-0659-034T	BRKT, QK REL BRD MNT - RH - TAUPE
1	1	999-0659-033T	BRKT, QK REL BRD MNT - LH - TAUPE

ASSEMBLY INSTRUCTIONS

FLEX BED UNILOCK LEG KIT (554-0653-000)

DWG # 999-0653-015



NOTE: THE FRAMES ARE SHOWN WITH THE SEAT SECTIONS REMOVED FOR CLARITY, THEY ARE NOT RELEVANT FOR THE INSTALLATION OF THE UNILOCK LEG BRACKETS

ASSEMBLY DIAGRAM

MOUNTING INSTRUCTIONS

- 1 - ATTACH UNILOCK LEG BRACKETS (4) TO FRAME PLATES AS SHOWN IN DIAGRAM USING HEX HEAD CAP SCREWS (2) AND NYLOCK NUTS (3). BE SURE TO LOCATE THE UNILOCK LEG BRACKETS AS SHOWN, DEPENDING UPON WHICH LEG YOUR BED IS EQUIPPED WITH. (SEE NOTES ON DIAGRAM.) NOTE THAT THERE ARE NO LEFT OR RIGHT HANDED PARTS, SO ORIENTATION AND HOLE ALIGNMENT OF THE UNILOCK LEG BRACKETS IS CRITICAL.
- 2 - ATTACH THE 1.25" ANGLE CAPS (1) TO THE BOTTOM OF EACH UNILOCK LEG AS SHOWN.

PARTS LIST

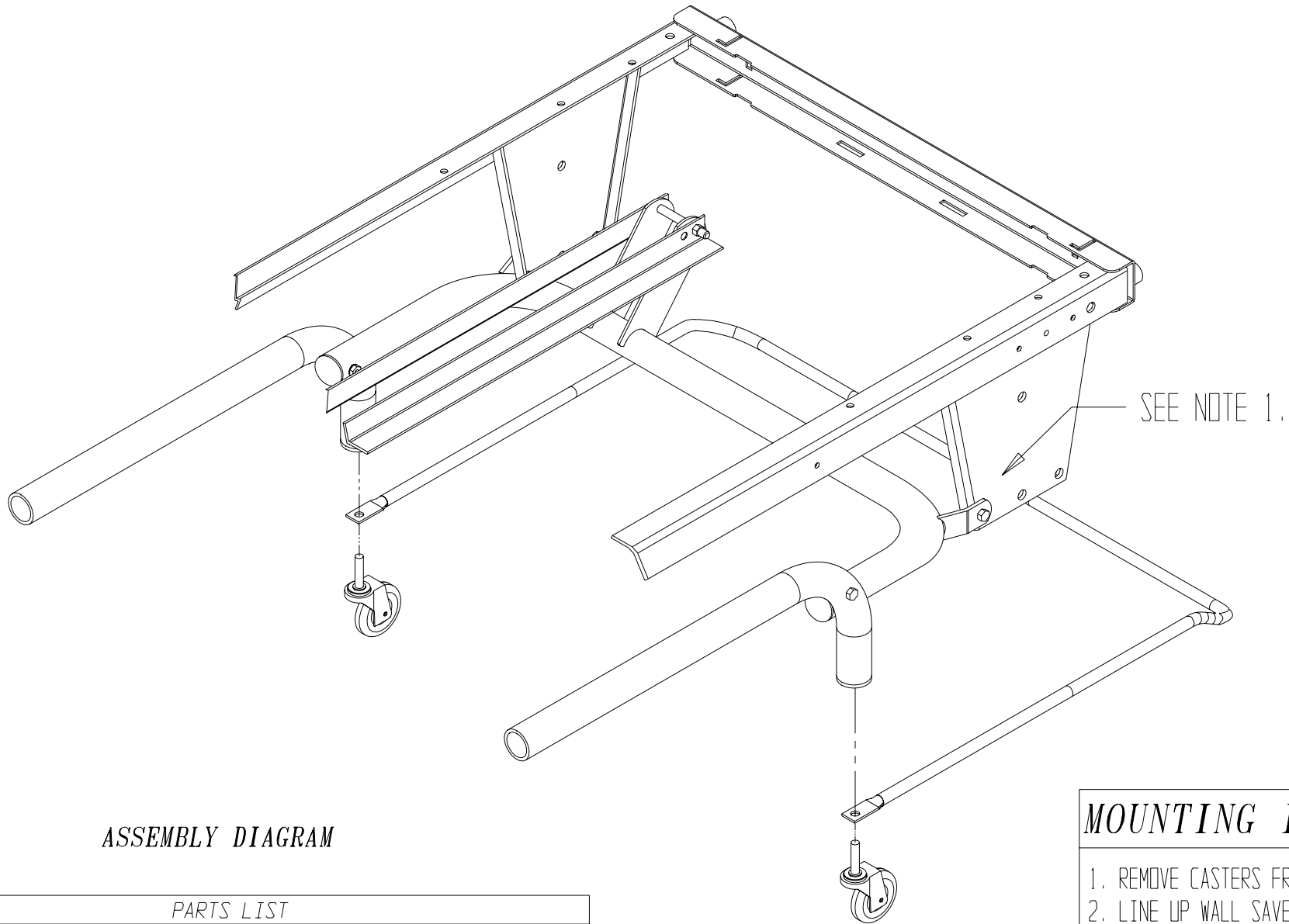
ITEM	QTY	DESCRIPTION	PART NUMBER
1	4	1.25" ANGLE CAP	100-4600-011
2	8	5/16-18 X 5/8" HHMS - ZINC	100-5431-017
3	8	5/16-18 NYLON LOCKNUT-THIN	100-6731-006
4	4	UNIVERSAL UNILOCK LEG BRACKET	999-0653-010T

NOTE:

- 1. ITEM #1 IS USED ON THE 76" FRAME.
- ITEM #2 IS USED ON THE 80" FRAME.
- ITEM #3 IS USED ON THE 84" FRAME.

ASSEMBLY INSTRUCTIONS

COMMON FLEX BED WALL SAVER (999-0654-080 80")
(999-0654-076 76")



ASSEMBLY DIAGRAM

MOUNTING INSTRUCTIONS

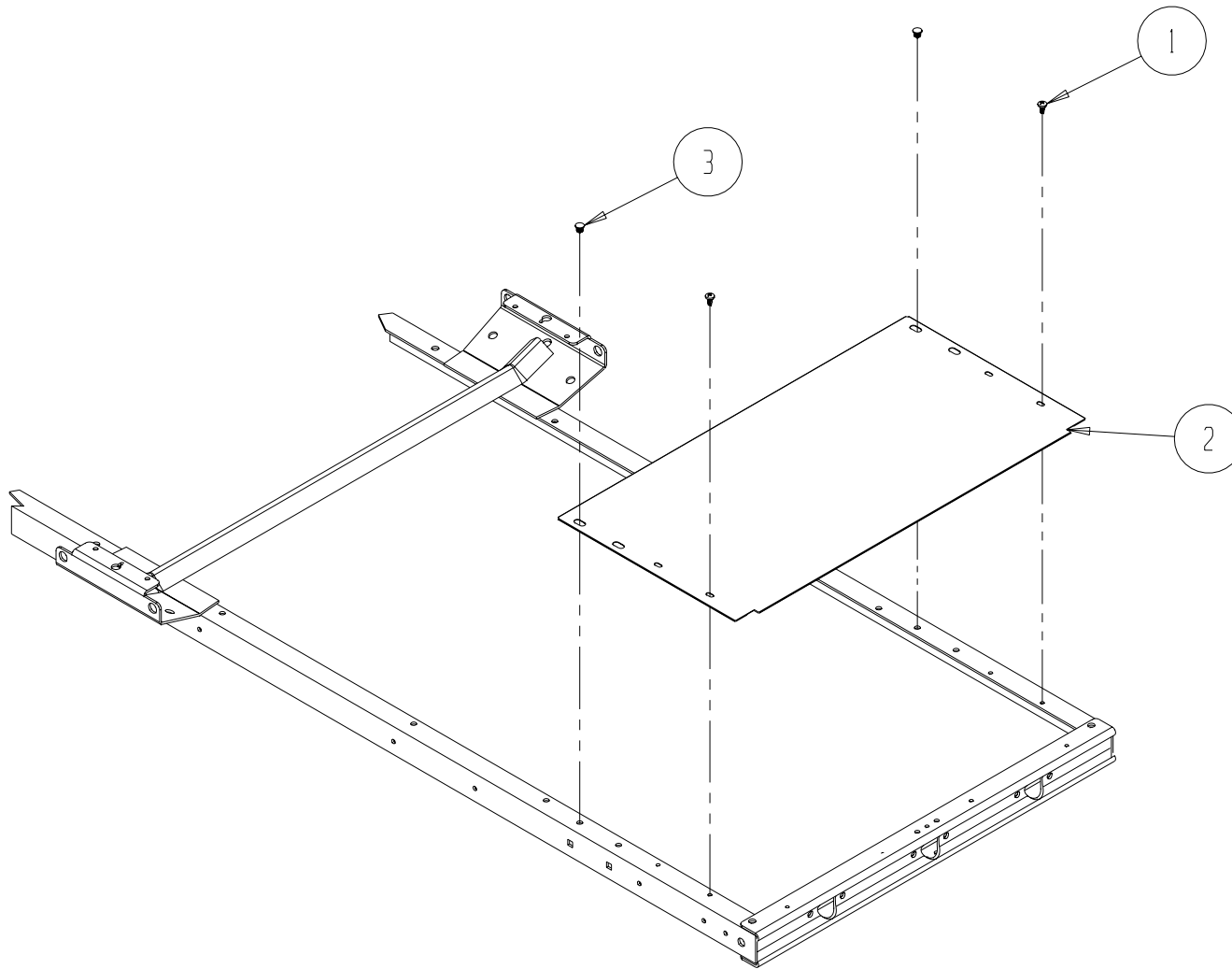
1. REMOVE CASTERS FROM HEAD END OF BED.
2. LINE UP WALL SAVER SO THAT HOLES ON WALL SAVER LINE UP WITH HOLES ON CASTER INSERTS (AS SHOWN IN DIAGRAM).
3. REINSERT CASTERS.

PARTS LIST

ITEM	QTY	DESCRIPTION	PART NUMBER
1	1	FLEX/ASTROLITE 76" WALL SAVER	999-0654-076
2	1	FLEX/ASTROLITE 80" WALL SAVER	999-0654-080
3	1	FLEX/ASTROLITE 84" WALL SAVER	999-0654-084

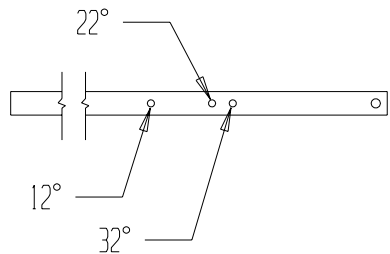
ASSEMBLY INSTRUCTIONS

DUST COVER, MANUAL CRANK (554-0685-000)



PARTS LIST

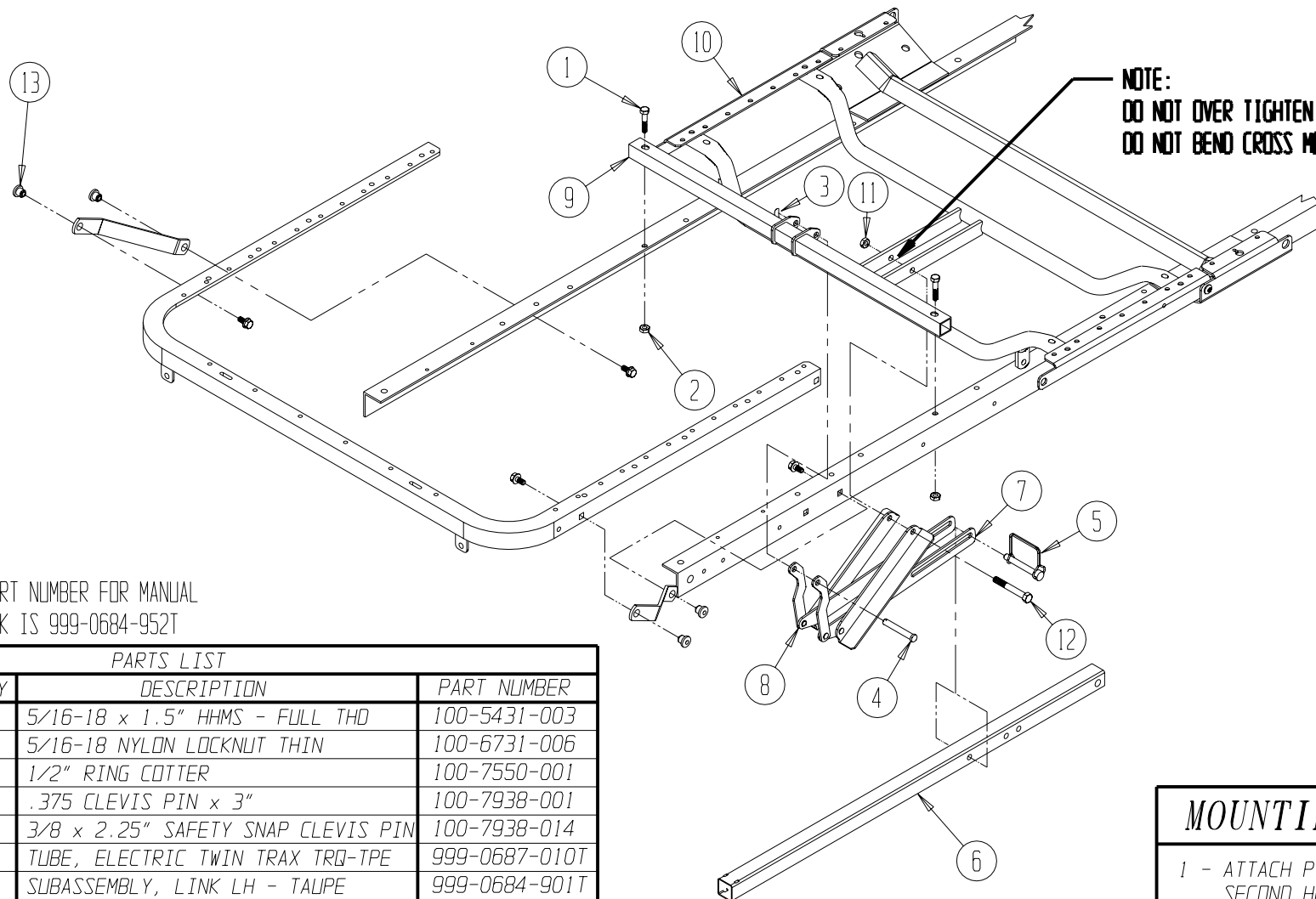
NO.	QTY.	DESCRIPTION	PART #
3	2	Ø.322 RATCHET FASTENERS	100-8300-002
2	1	DUST COVER, MANUAL CRANK	999-0685-050T
1	2	1/4-20 x .500 PPH TYPE 23 EXSTEMS	100-5425-087



ASSEMBLY INSTRUCTIONS

MANUAL TWIN TRAX ASSEMBLY (554-0684-000)

ELECTRIC TWIN TRAX ASSEMBLY (554-0687-000)



*NOTE: PART NUMBER FOR MANUAL DRIVE PACK IS 999-0684-952T

PARTS LIST

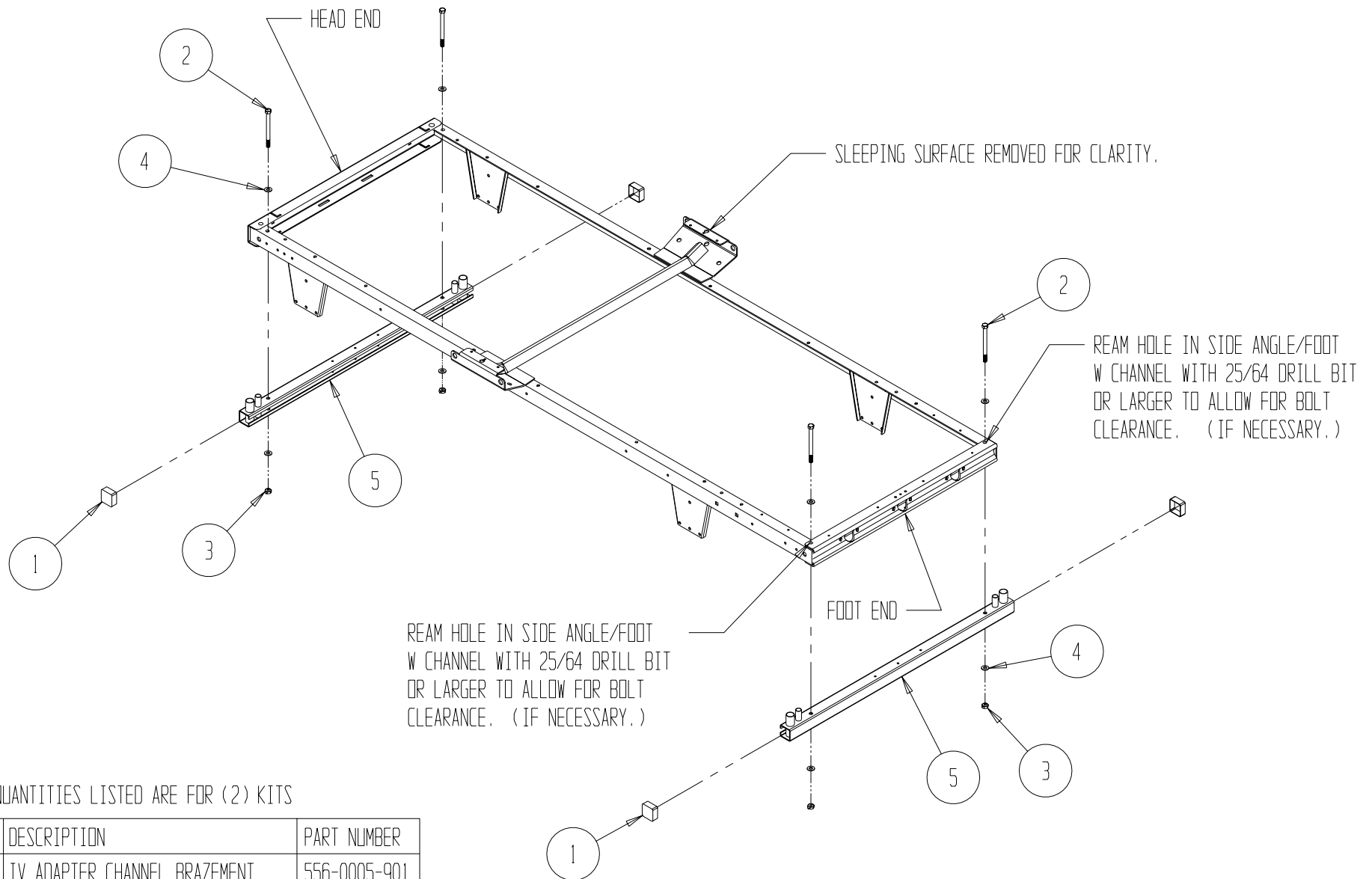
ITEM	QTY	DESCRIPTION	PART NUMBER
1	2	5/16-18 x 1.5" HHMS - FULL THD	100-5431-003
2	2	5/16-18 NYLON LOCKNUT THIN	100-6731-006
3	1	1/2" RING COTTER	100-7550-001
4	1	.375 CLEVIS PIN x 3"	100-7938-001
5	1	3/8 x 2.25" SAFETY SNAP CLEVIS PIN	100-7938-014
6*	1	TUBE, ELECTRIC TWIN TRAX TRQ-TPE	999-0687-010T
7	1	SUBASSEMBLY, LINK LH - TAUPE	999-0684-901T
8	1	SUBASSEMBLY, LINK RH - TAUPE	999-0684-902T
9	1	WELDMENT, TUBE PIVOT BRACE - TAUPE	999-0684-905T
10	1	WELDMENT, THIGH SECTION - TAUPE	999-0684-940T
11	1	3/8-16 NYLOCK NUT	100-6738-003
12	1	3/8-16 x 3.00" HEX HD. MCH. SCREW	100-5438-024
13	4	SELF WRENCHING NUT	806-0277-008

MOUNTING INSTRUCTIONS

- 1 - ATTACH PIVOT BRACE TUBE TO FRAME IN SECOND HOLE FROM SEAT BRACKET AS SHOWN.
- 2 - ATTACH LEFT AND RIGHT HAND SUBASSEMBLY TO CROSS BRACE AND THIGH SECTION AS SHOWN.
- 3 - ATTACH TO TORQUE TUBE AS SHOWN USING SAFETY SNAP CLEVIS PIN

ASSEMBLY INSTRUCTIONS

ZIMMER TRACTION ADAPTER 556-0005-000 (QTY (2))



QUANTITIES LISTED ARE FOR (2) KITS

ITEM	QTY	DESCRIPTION	PART NUMBER
5	2	IV ADAPTER CHANNEL BRAZEMENT	556-0005-901
4	8	13/32 x 3/16 x 1/16 SAE WASHER	100-8438-010
3	4	3/8-16 NYLON JAM LOCKNUT	100-6738-003
2	4	3/8-16 x 4.50 HHMS - ZN	100-5438-025
1	4	END CAP	100-4615-002

NOTE:
 1. ALL GENERATION 4 BEDS USE
 (2) TWO ADAPTER KITS AS SHOWN.

SECTION FOUR
TROUBLE SHOOTING GUIDE

Actuator and Control Box Troubleshooting Guide

1. Confirm the **Power Cord** is **properly** connected.
2. Confirm the **Pendant** is **properly** connected.
3. Do a **Visual Inspection** of the **Control Box**.
 - Do all the **Actuator Connectors** have six (6) pins, and are they straight?
 - Does the **Pendant Connector** have nine (9) pins, and are they straight?
 - Is the **Power Cord** or **Plug** damaged?
 - Is the **Control Box** damaged?

All Functions Inoperative

1. When a **Pendant Button** is pushed and a “**clicking**” sound is heard, but the **Actuator** does not move
 - Replace the **Control Box**
 - Bad relay
2. When a **Pendant Button** is pushed, and there is no “**clicking**” sound, and/or **Actuator** movement
 - Replace the **Pendant**

Head Up or Head Down Function Inoperative

Step 1: Actuator

Disconnect the **Head Actuator** from the **Control Box**

Disconnect the **Foot Actuator** from the **Control Box**

Reconnect the **Head Actuator** into the **Foot Actuator** connector on the **Control Box**

Then activate the **Foot Buttons** on the **Pendant**

- If the **Actuator** does not function
- Replace the **Actuator**
- If the **Actuator** functions
- Reconnect all cords to original positions
- Press the head up and/or down button again
- If you hear a “**clicking**” sound
- Replace the **Control Box**
- If you hear no “**clicking**” sound
- Replace the **Pendant**

Foot Up or Foot Down Function Inoperative

Step 1: Actuator

Disconnect the **Foot Actuator** from the **Control Box**

Disconnect the **Head Actuator** from the **Control Box**

Reconnect the **Foot Actuator** into the **Head Actuator** connector on the **Control Box**

Then activate **the Head Buttons** on the **Pendant**

- If the **Actuator** does not function
- Replace the **Actuator**
- If the **Actuator** functions
- Reconnect all cords to original positions
- Press the foot up and/or down button again
- If you hear a “**clicking**” sound
- Replace the **Control Box**
- If you hear no “**clicking**” sound
- Replace the **Pendant**

Hi/Lo Function Inoperative

Step 1: Actuator

Disconnect the **Hi/Lo Actuator** from the **Control Box**

Disconnect the **Foot** and/or **Head Actuator** from the **Control Box**

Reconnect the **Hi/Lo Actuator** into the **Foot** and/or **Head Actuator** connector on the **Control Box**

Then activate **the Head and/or Foot Buttons** on the **Pendant**

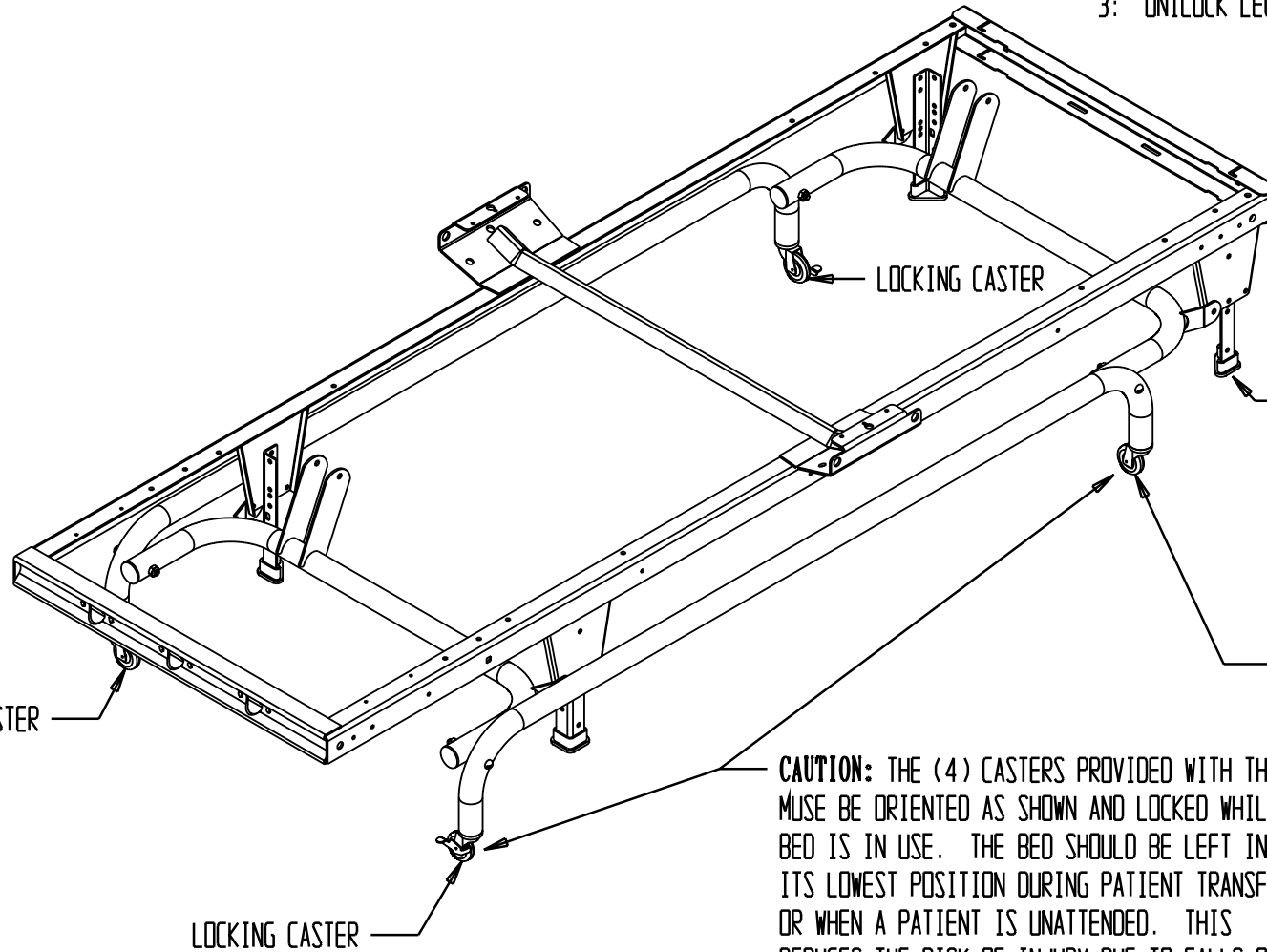
- If the **Actuator** does not function
- Replace the **Actuator**
- If the **Actuator** functions
- Reconnect all cords to original positions
- Press the hi/lo up and/or down button again
- If you hear a “**clicking**” sound
- Replace the **Control Box**
- If you hear no “**clicking**” sound
- Replace the **Pendant**

ATTENTION:

CONTACT BASIC AMERICAN METAL PRODUCTS CUSTOMER SERVICE AT 1-800-365-2338 WITH QUESTIONS OR IF ASSISTANCE IS REQUIRED.

NOTE:

- 1: STANDARD 3" CASTER BAG PN (999-0301-904)
- 2: 4" DOUBLE LOCK CASTER BAG PN (999-0617-903)
- 3: UNILOCK LEG KIT PN (554-0653-000)



THE UNILOCK LEGS PROVIDED WITH THE BED MUST BE ATTACHED TO BED AT ALL TIMES. FAILURE TO INSTALL THE UNILOCK LEGS MAY VOID MANUFACTURER'S WARRANTY.

CAUTION: THE (4) CASTERS PROVIDED WITH THE BED MUST BE ORIENTED AS SHOWN AND LOCKED WHILE BED IS IN USE. THE BED SHOULD BE LEFT IN ITS LOWEST POSITION DURING PATIENT TRANSFERS OR WHEN A PATIENT IS UNATTENDED. THIS REDUCES THE RISK OF INJURY DUE TO FALLS OCCURRING WHEN PATIENTS GET INTO OR OUT OF BED UNASSISTED, DURING STAFF ASSISTED TRANSFERS, AND WHILE THE PATIENT IS LYING IN BED.